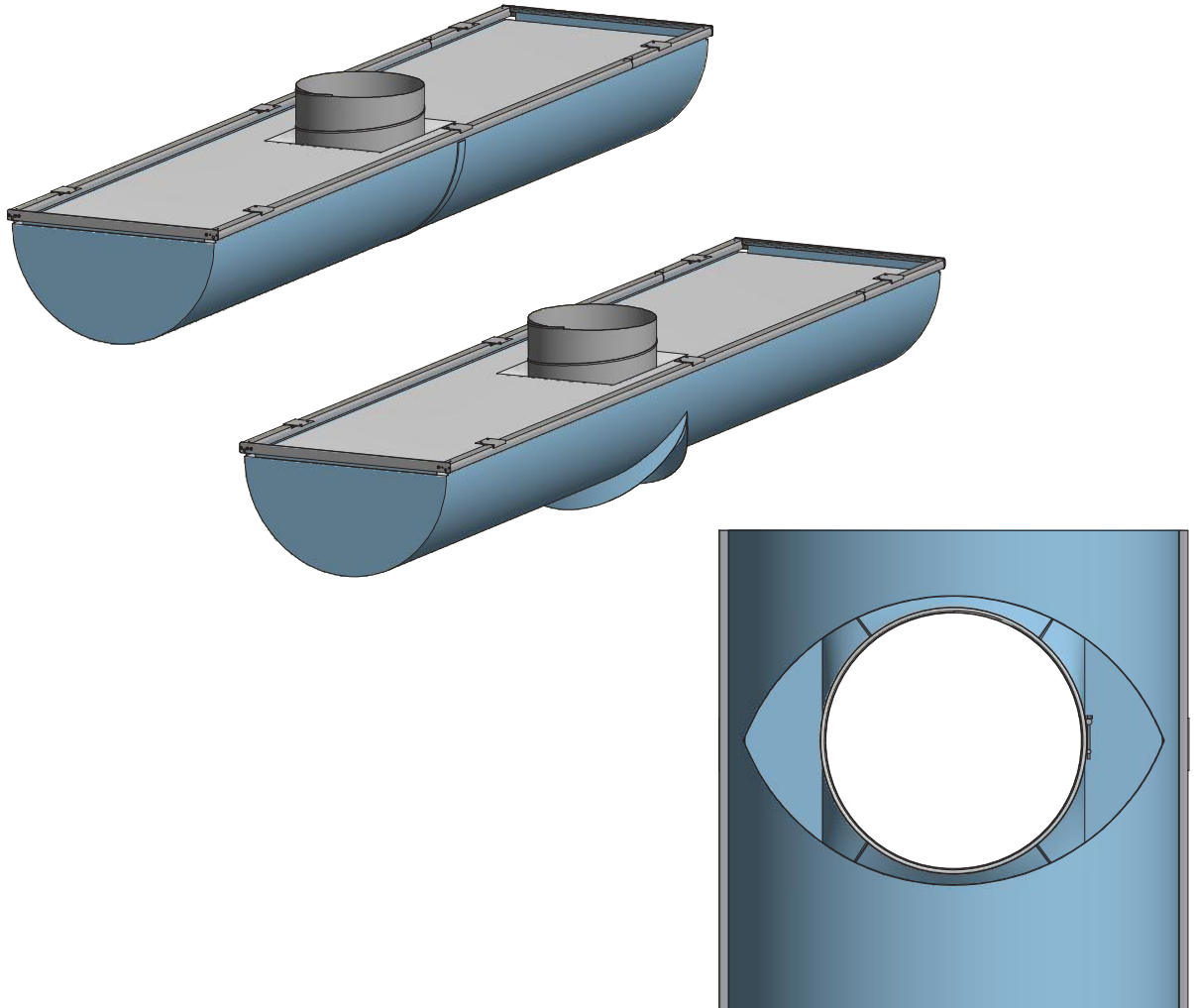


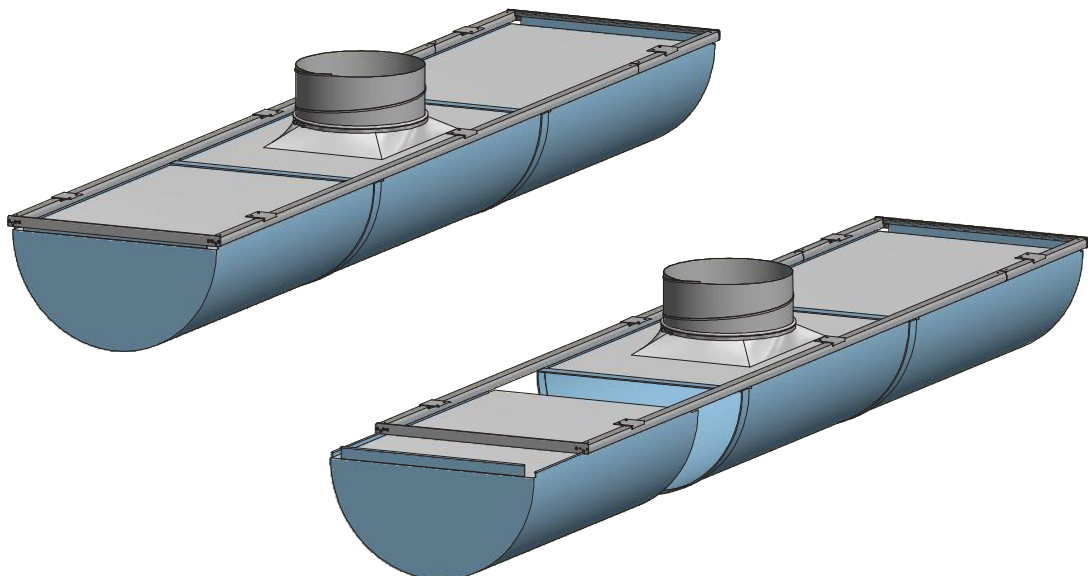
## D-Safetrack for KE-Interior System (Service Zipper)

DS-0010-US-02

Safetrack D-Duct with Service Zipper



Safetrack D-Duct with Zipper

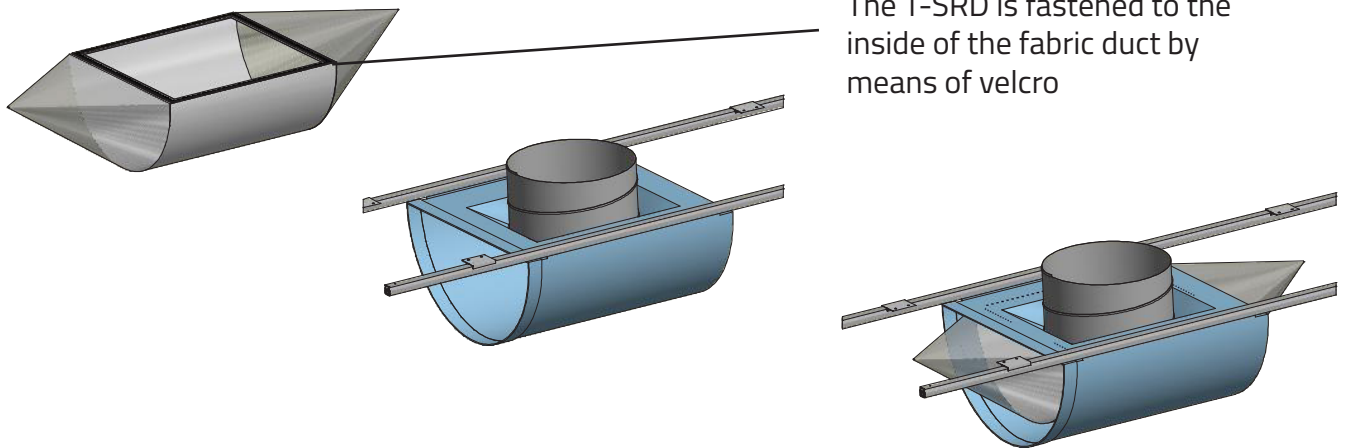


## D-Safetrack for KE-Interior System (KE-SRD)

DS-0011-US-02

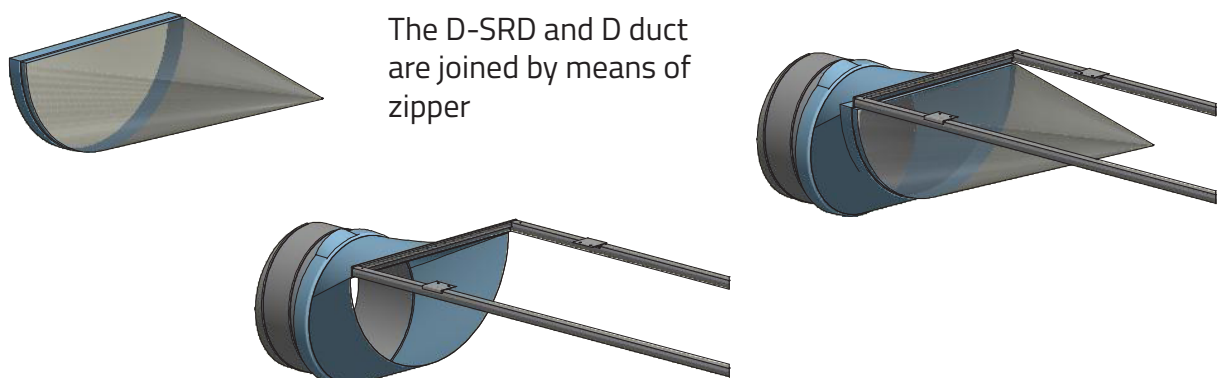
### Installation of T-SRD (top inlet)

The T-SRD is optional



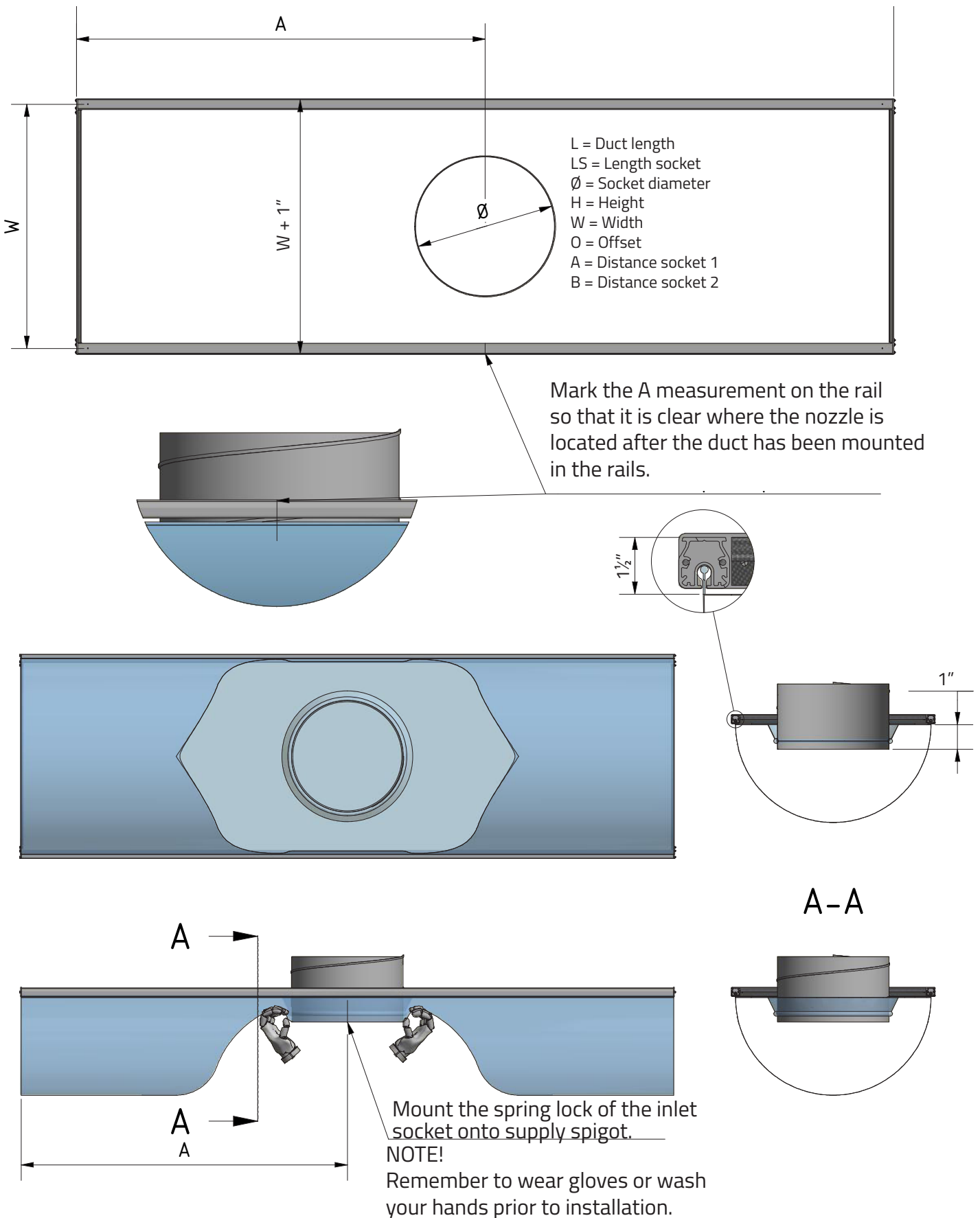
### Installation of D-SRD (end inlet)

The D-SRD is optional



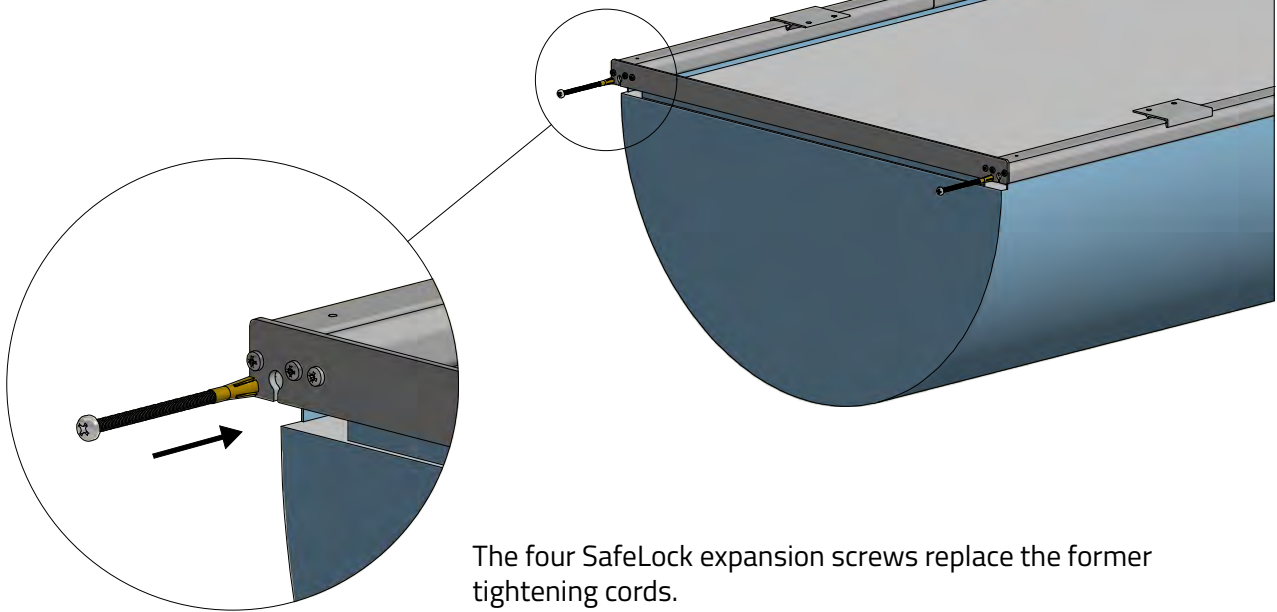
# D-Safetrack for KE-Interior System (Inlet socket with spring lock)

DS-0012-US-02



## SafeLock for D-Safetrack

DS-0013-US-01



The four SafeLock expansion screws replace the former tightening cords.

The SafeLock is inserted into the "keyhole" at the end of the Safetrack. Apply drill driver with bit PC2.

All four SafeLock expansion screws must be fully inserted before tightening the duct. Be careful not to over-tighten the screws.

