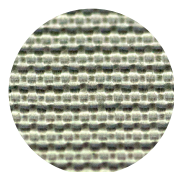


MultiWeave®

Durable and versatile
textile duct material





MultiWeave is a multifunctional material that is highly suited for many different applications, from cleanroom facilities of ISO class 4, industrial facilities and sports halls to equalising rooms in meat factories.

CRADLE TO CRADLE COLOURS - PANTONE/RAL

			
WHITE 11-0601-TP / 9010	LIGHT GREY 12-4705-TP / 9002	DARK BLUE 19-3864-TP / 5002	BLACK 19-5708-TP / 9005
			
			
YELLOW 14-0955-TP / 1028	DARK GREY 17-4402-TPG / 7042	LIGHT BLUE 16-4132-TP / N/A	GREEN 18-6024-TP / 6016
			







STOCK COLOURS - PANTONE/RAL

	
BEIGE/TAN 15-1215-TP / 1019	RED 18-1655-TP / 3031

- MultiWeave is made of multi-filament yarns with a plain surface structure. The filtration of the supply air is equivalent to that of a G2 prefilter acc. to EN779:2012
- All Cradle to Cradle colours are manufactured at our own weaving mill
- The material is cleanroom certified as class 4 acc. to ISO 14644-1 - no shedding of particles
- Fire tested acc. to EN13501 B-S1-d0 without any finishing treatment
- Highly durable material. Tear strength of 110- 210 N acc. to EN ISO 13937:2
- Optional environmentally friendly antibacterial (Antibac-E) treatment for very humid environments (> 85% RH)
- Max. shrinkage of finished fabrics is 0.5%

KE NO.	DESIGNATION	PERMEABILITY/ 120 Pa [m³/m²/h]	DATASHEET
MW40	Flame retardant special Polyester fabric Class 4 Cleanroom	40	41

CRADLE TO CRADLE COLOURS PANTONE/RAL

		
WHITE 11-0601-TP / 9010	LIGHT GREY 12-4705-TP / 9002	DARK BLUE 19-3864-TP / 5002
		

KE NO.	DESIGNATION	PERMEABILITY/ 120 Pa [m³/m²/h]	DATASHEET
MW20	Flame retardant special Polyester fabric - Class 4 Cleanroom	20	40
MW80	Flame retardant special Polyester fabric - Class 4 Cleanroom	80	43
MW320	Flame retardant special Polyester fabric - Class 4 Cleanroom	320	44
MW600	Flame retardant special Polyester fabric - Class 4 Cleanroom	600	45

03/2025

