

D-Lite Alu Suspension for KE-1½D Interior System

QL-0003-GB-05

Further D-Lite Alu rails (standard 2000 mm)

Starter Kit contains:

Grub screws (2)

Grub screws (2)

End section (1)
End screws (4)

Start rails (2)

Joining pins (6)

A

A

500mm

Channel opening for
mounting of textile
bulb

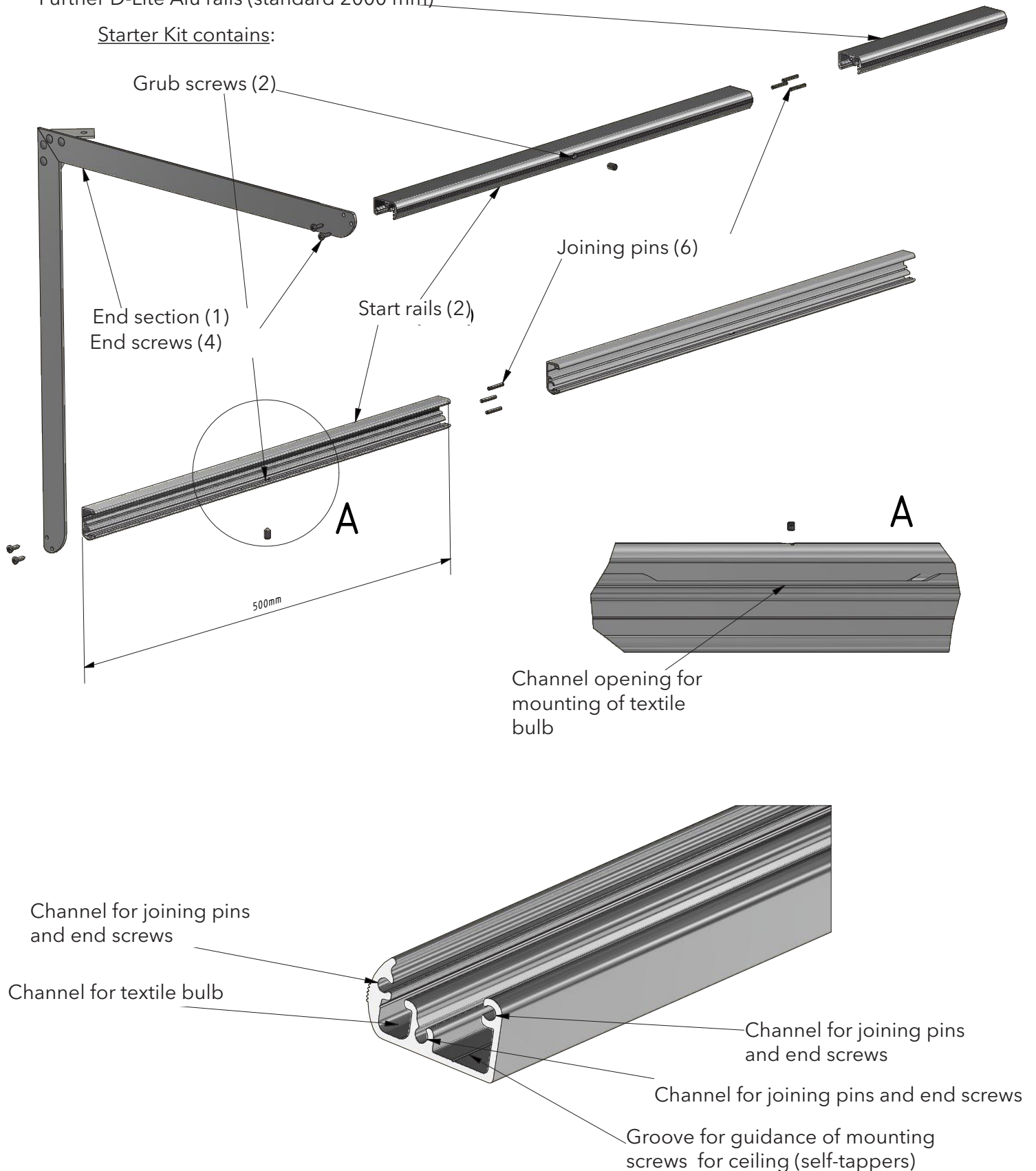
Channel for joining pins
and end screws

Channel for textile bulb

Channel for joining pins
and end screws

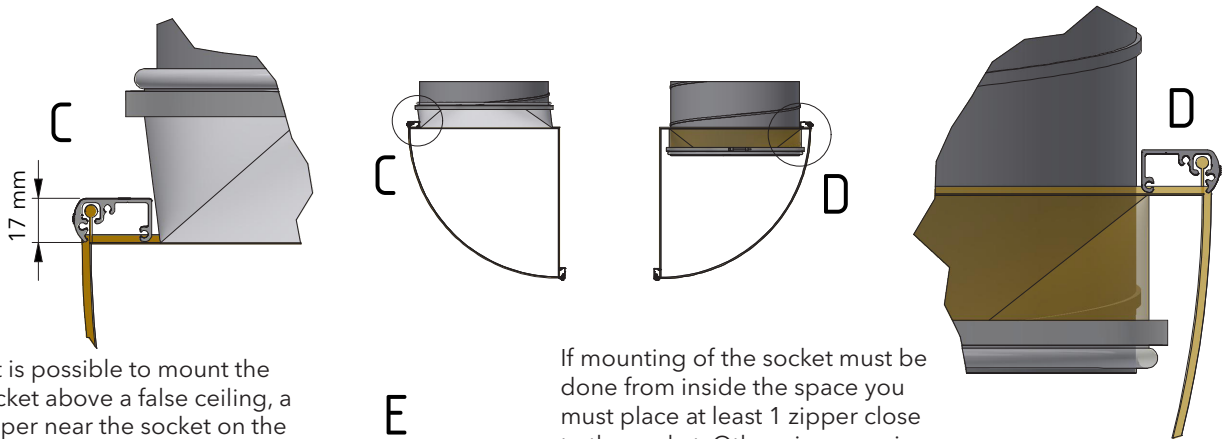
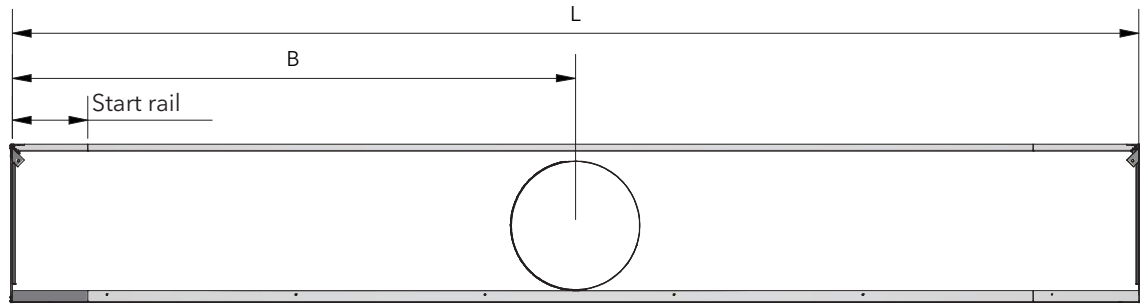
Channel for joining pins and end screws

Groove for guidance of mounting
screws for ceiling (self-tappers)



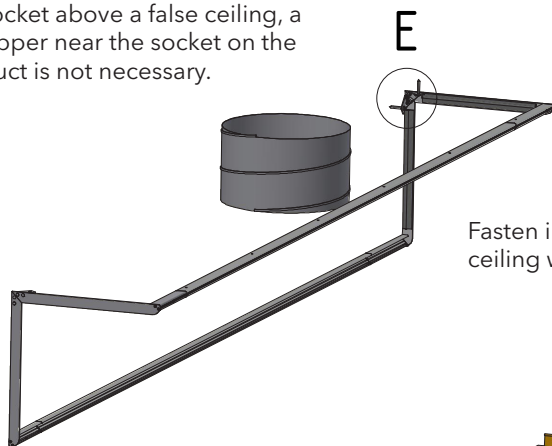
D-Lite Alu for KE-1/2D Interior System (Rail Assembly)

QL-0004-GB-05

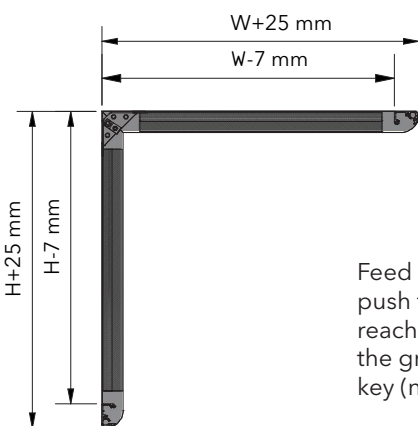
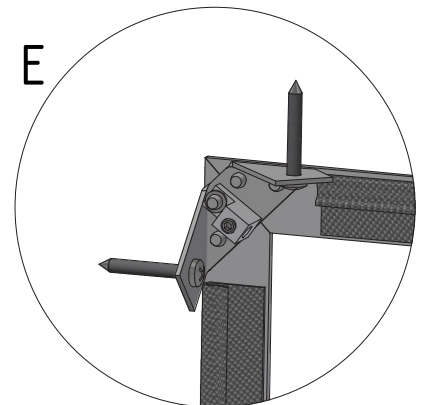


If it is possible to mount the socket above a false ceiling, a zipper near the socket on the duct is not necessary.

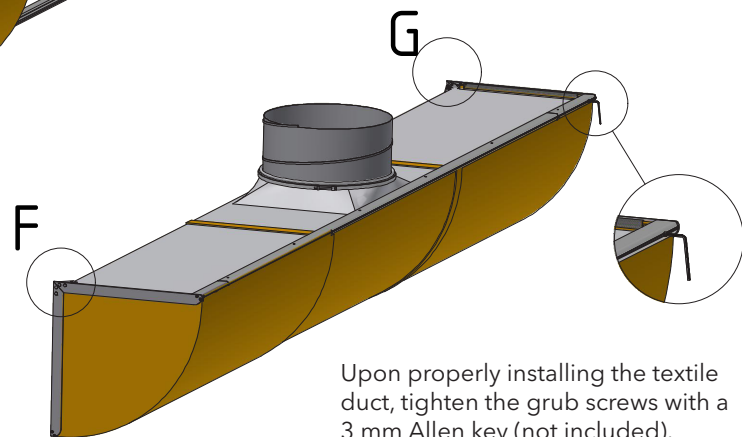
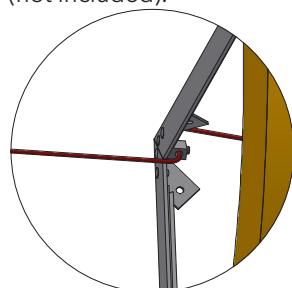
If mounting of the socket must be done from inside the space you must place at least 1 zipper close to the socket. Otherwise a service zipper must be placed in the arc of the duct.



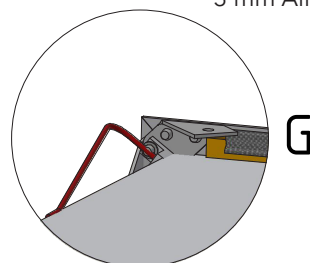
Fasten inner corner of rail to wall or ceiling with at least one screw.



Feed cord through hole. Pull/ push the duct along the rails until reaching the end section. Tighten the grub screw with a 3 mm Allen key (not included).

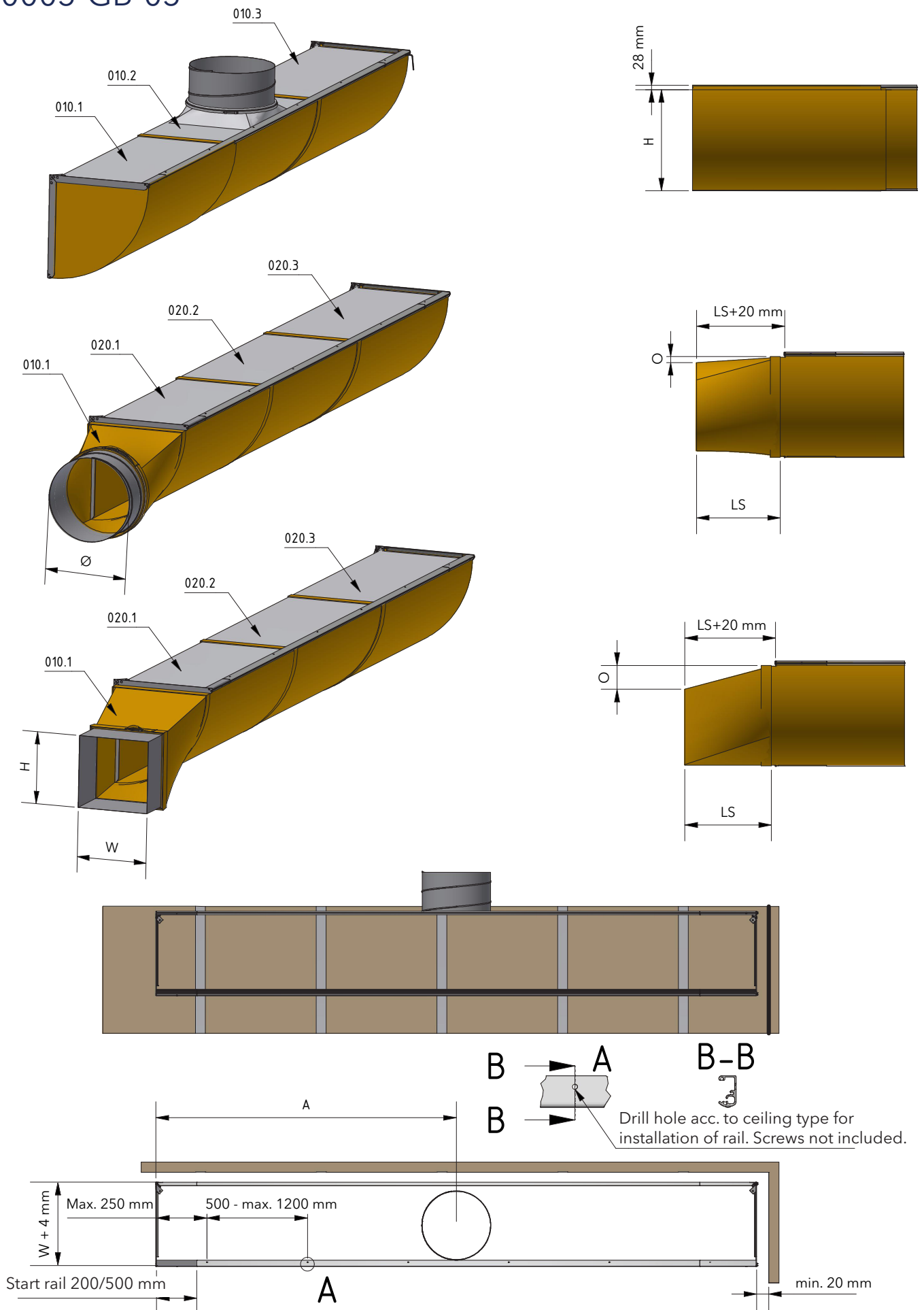


Upon properly installing the textile duct, tighten the grub screws with a 3 mm Allen key (not included).



D-Lite Alu for KE-1/2D Interior System (Inlet options)

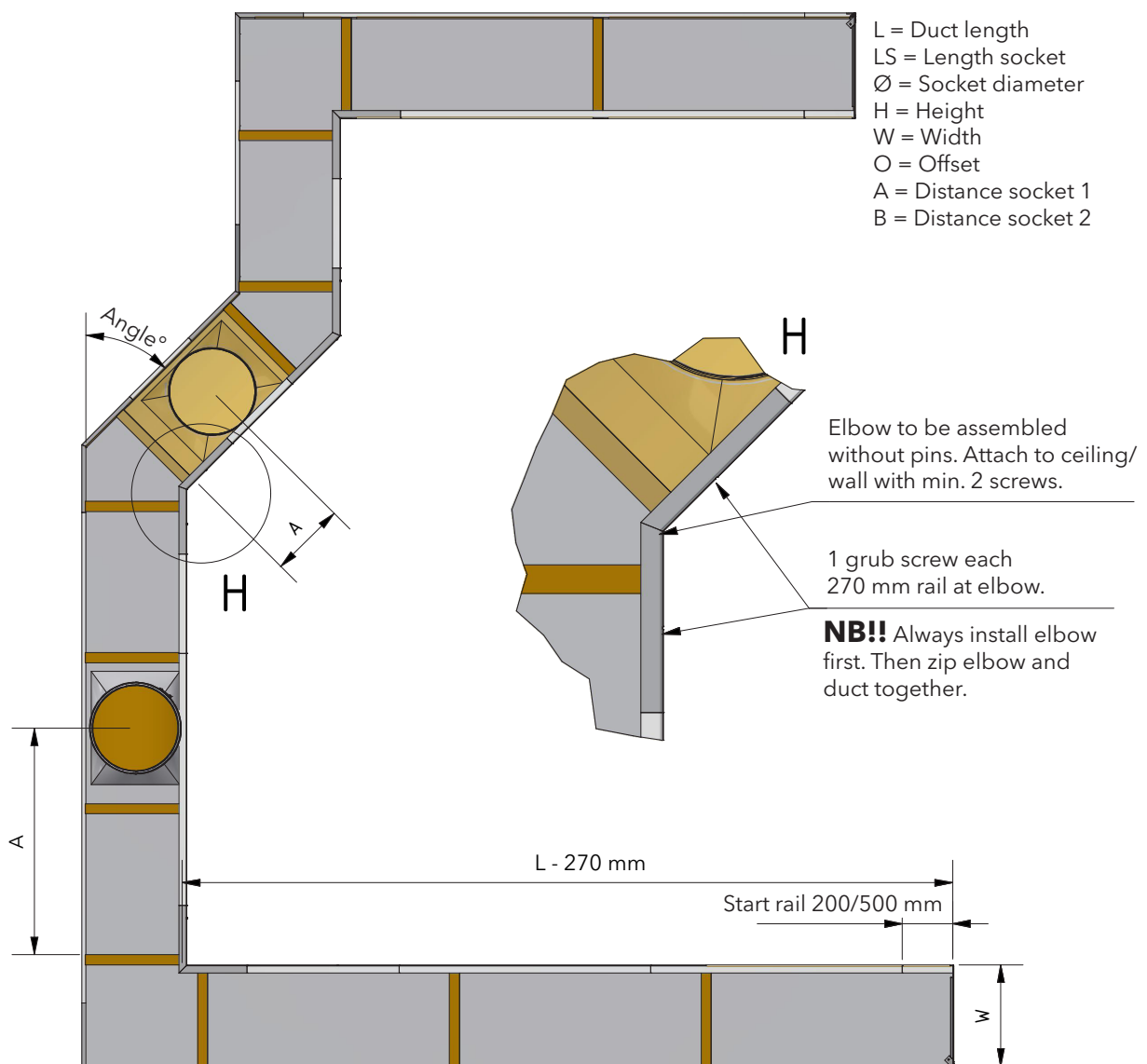
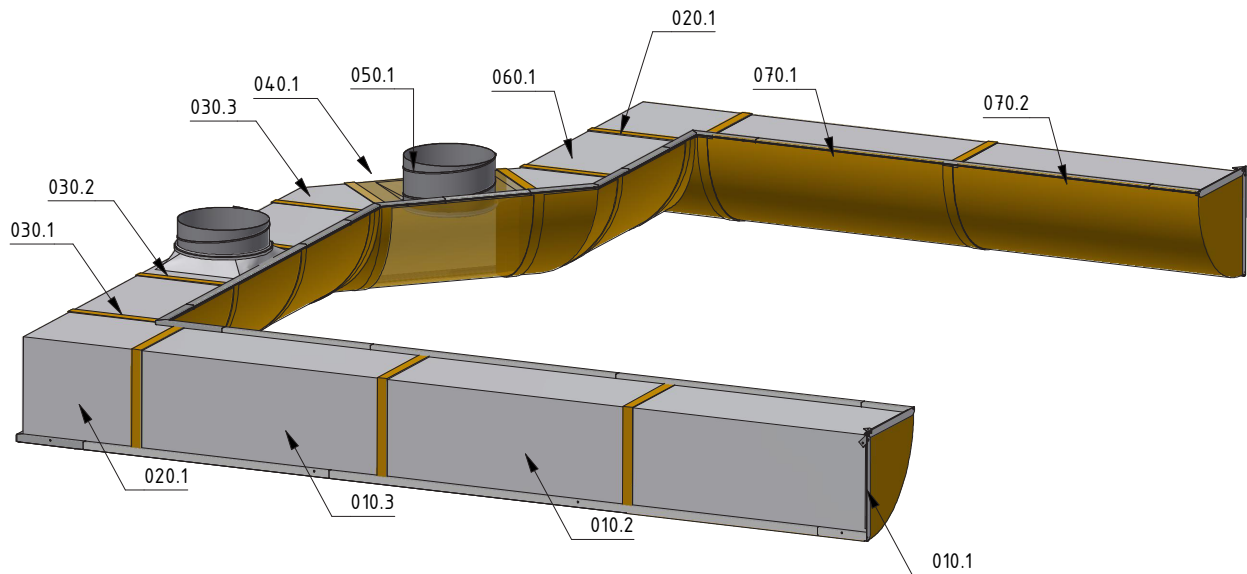
QL-0005-GB-05



D-Lite Alu for KE-1½D Interior System (Plenum)

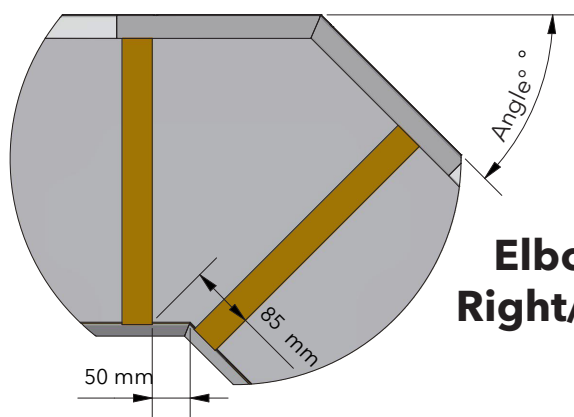
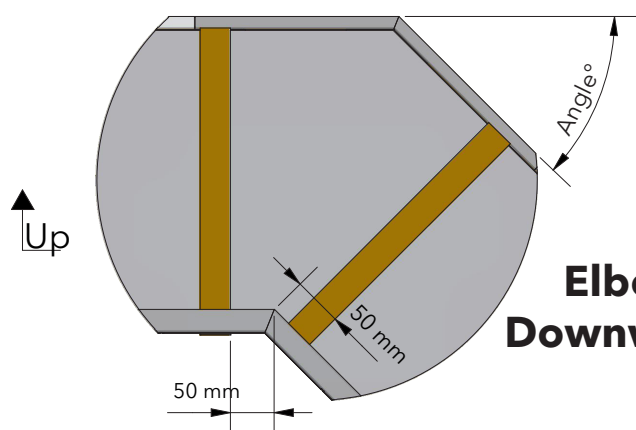
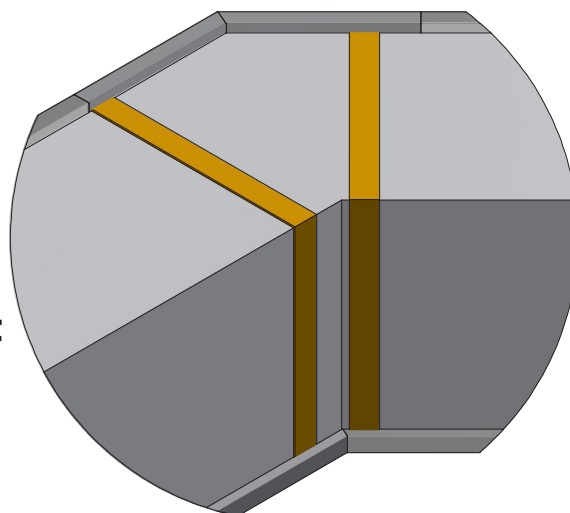
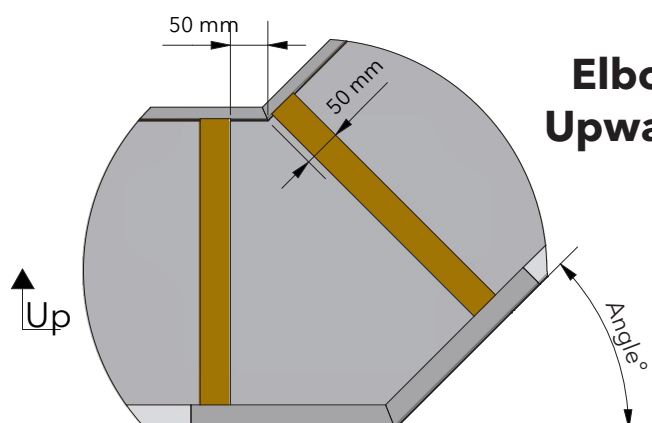
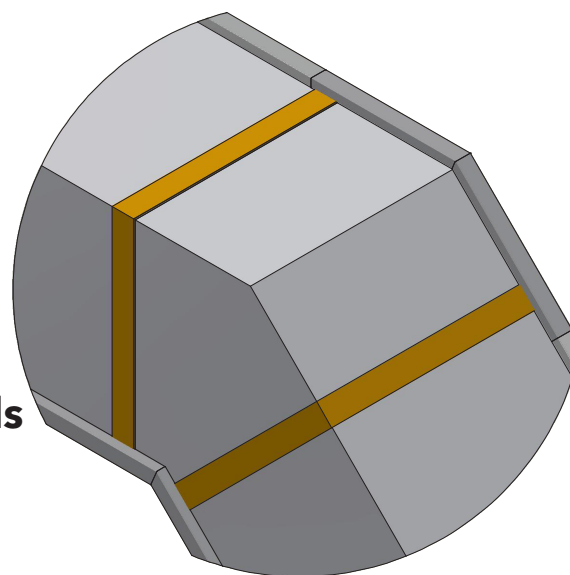
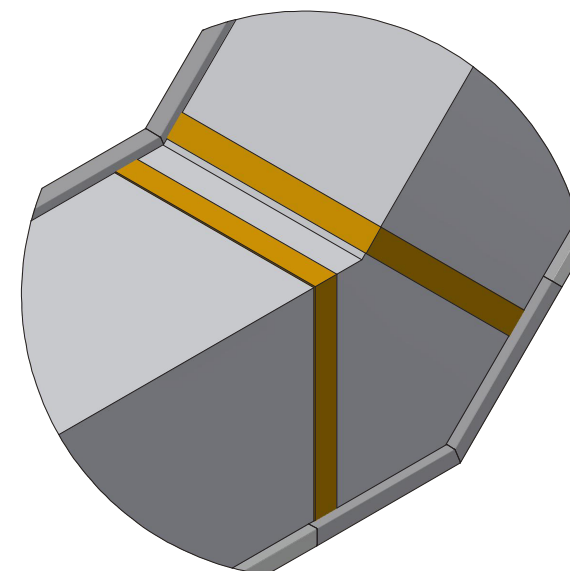
AIR THE WAY YOU WANT

QL-0006-GB-05



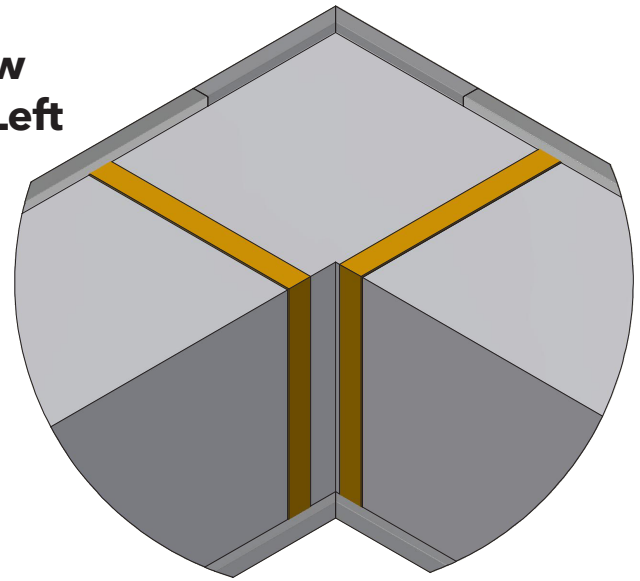
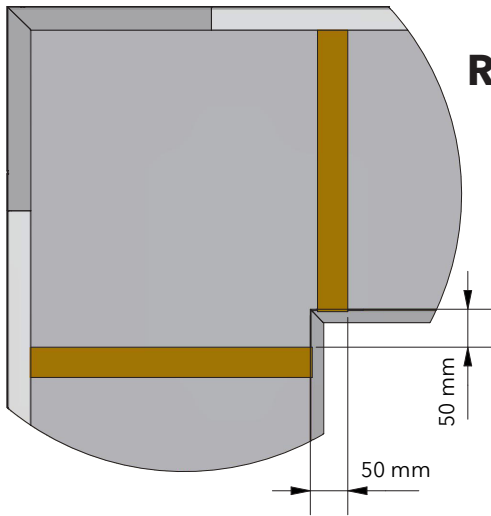
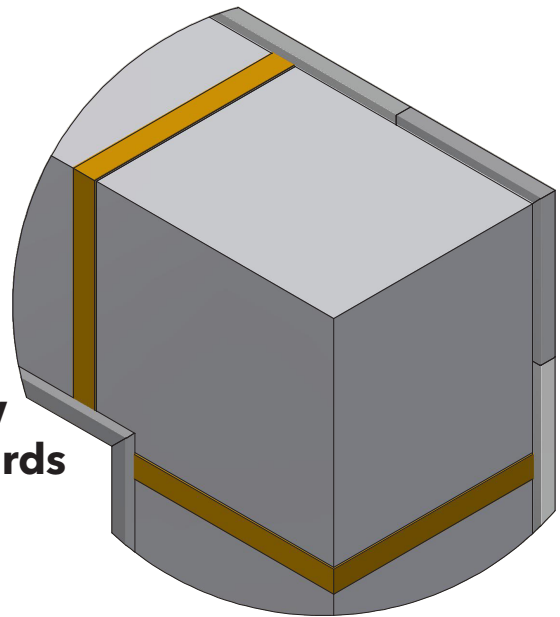
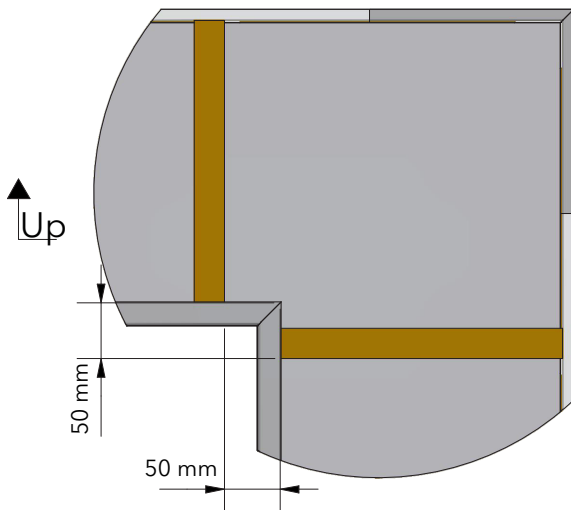
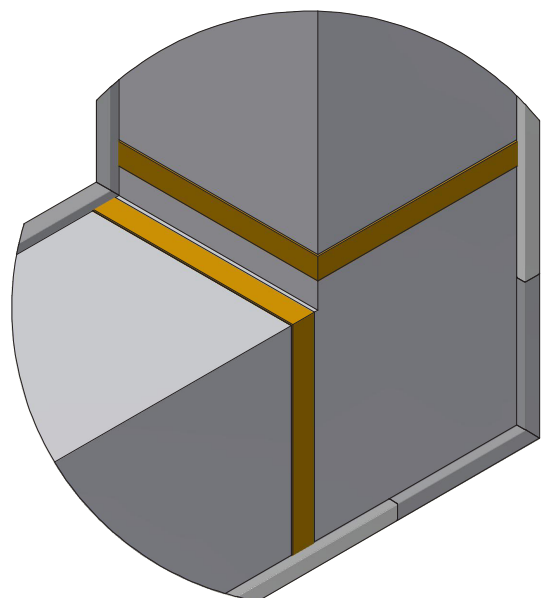
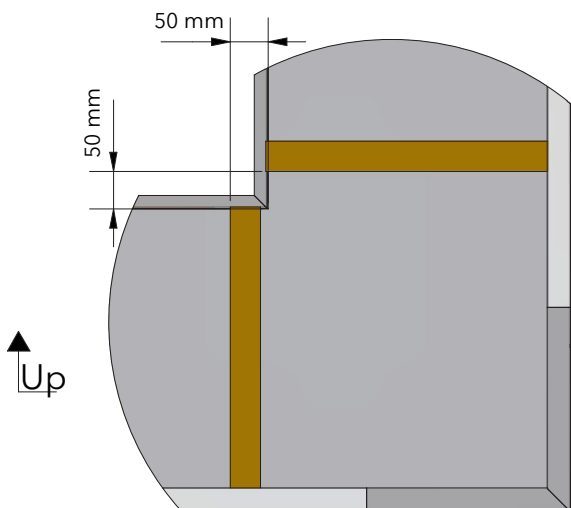
D-Lite Alu for KE-1/2D Interior System (Elbow)

QL-0007-GB-05

See delivery note for specific angle**Elbow
Right/Left****Elbow
Downwards****Elbow
Upwards**

D-Lite Alu for KE-1½D Interior System (Elbow 90°)

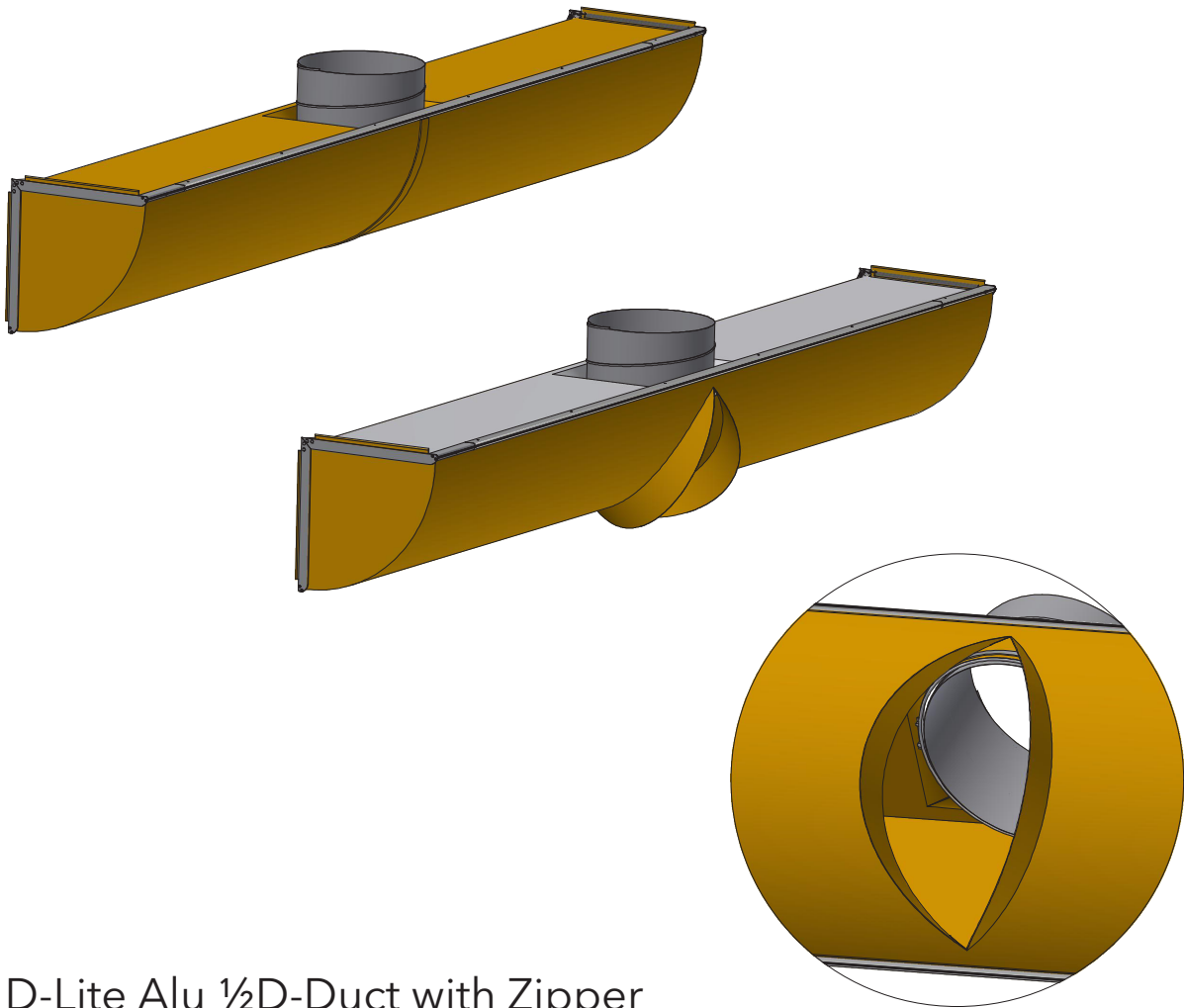
QL-0008-GB-05

**Elbow
Right/Left****Elbow
Downwards****Elbow
Upwards**

D-Lite Alu for KE-½D Interior System (Service Zipper)

QL-0009-GB-05

D-Lite Alu ½D-Duct with Service Zipper



D-Lite Alu ½D-Duct with Zipper

