

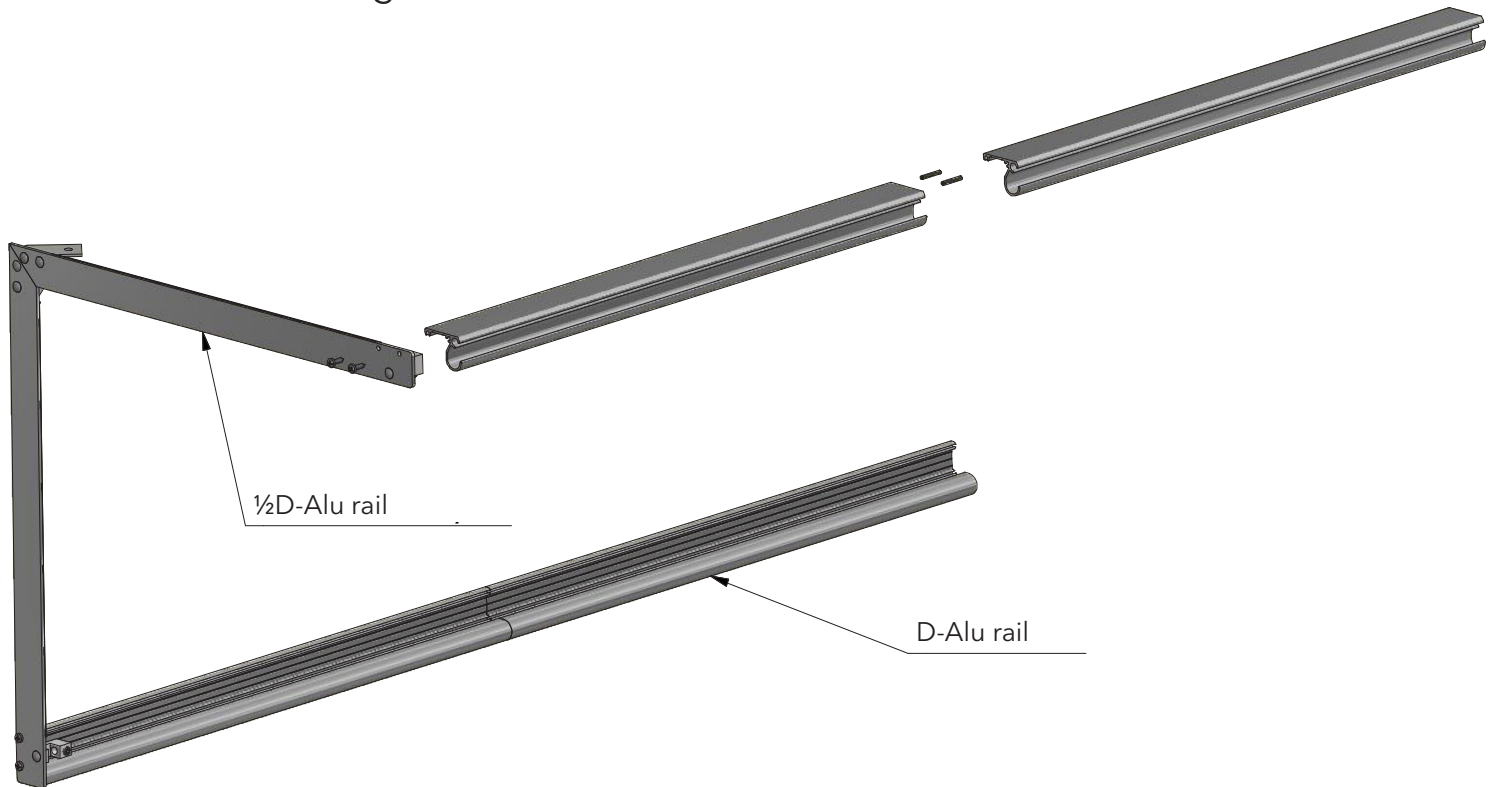
D-Alu Suspension for KE-½D Interior System

AIR THE WAY YOU WANT

QA-0003-GB-04

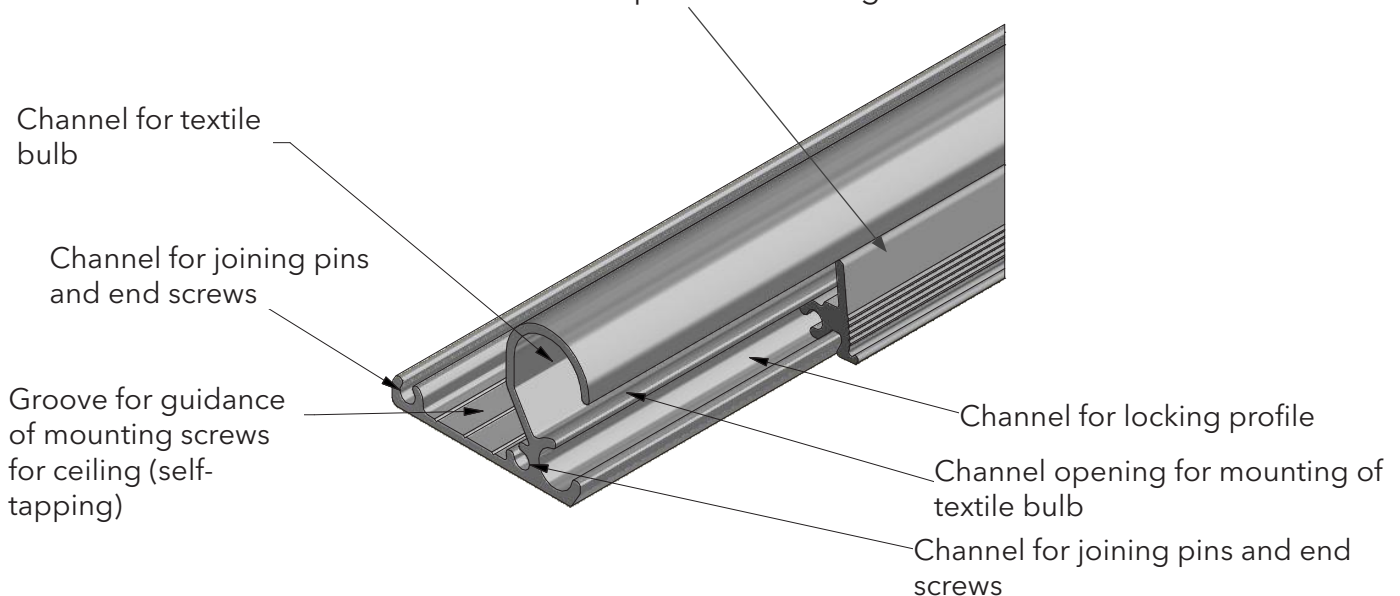
½D-Alu Rail System

Install rail system according to drawings and enclosed mounting instructions.



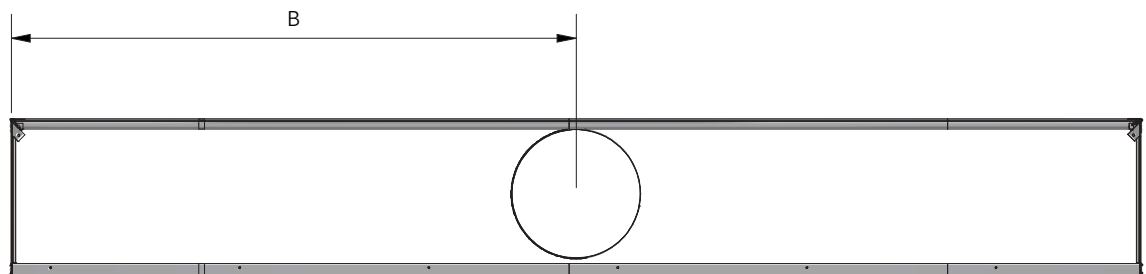
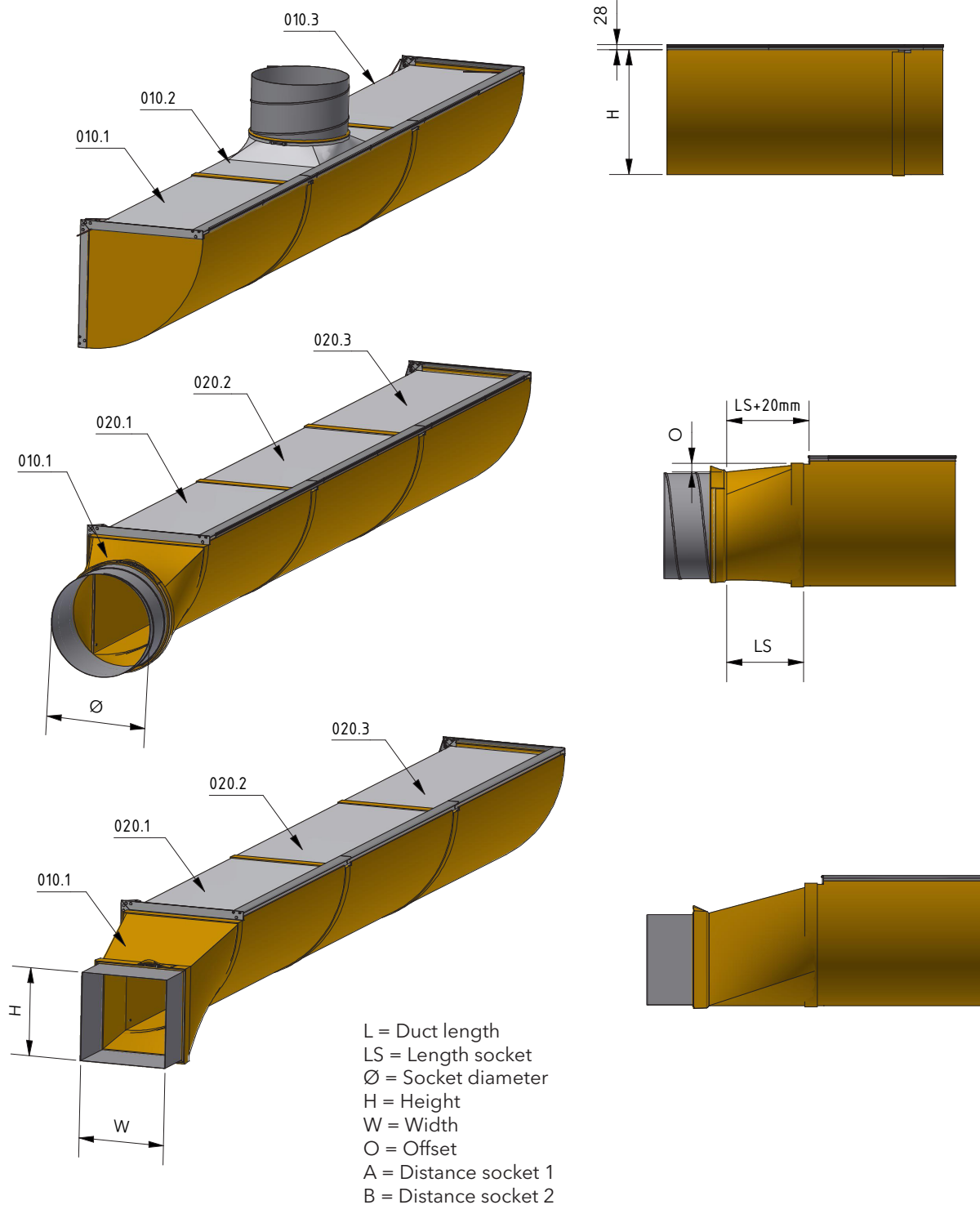
Locking profile (std. 500 mm):
Feed into D-Alu rails prior to mounting of end sections.
Adjust length of locking profile to D-Alu rail.

Final locking profile is sawn off at approx. 10 mm short of
D-Alu rail so as to prevent blocking.



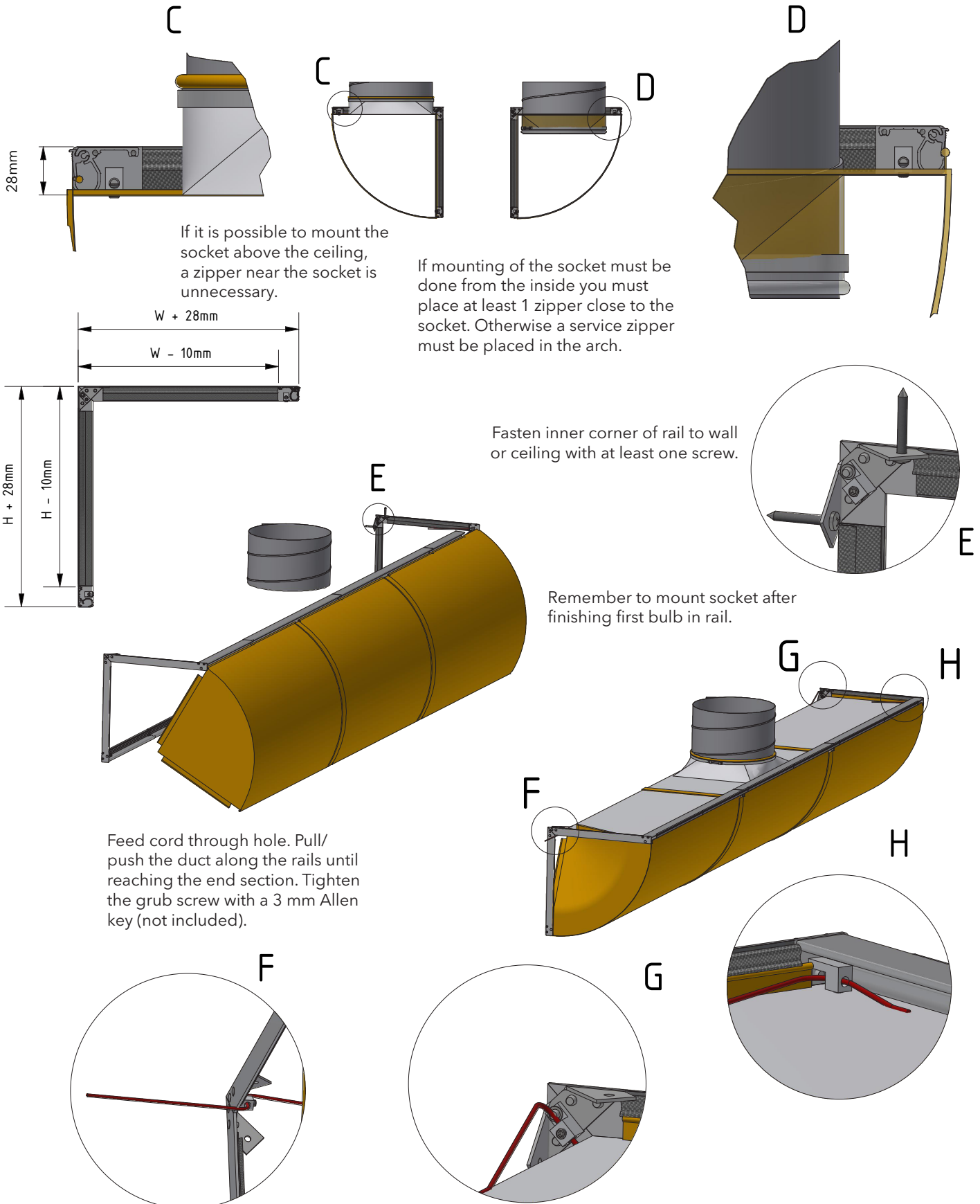
D-Alu for KE-½D Interior System (Inlet Options)

QA-0004-GB-04



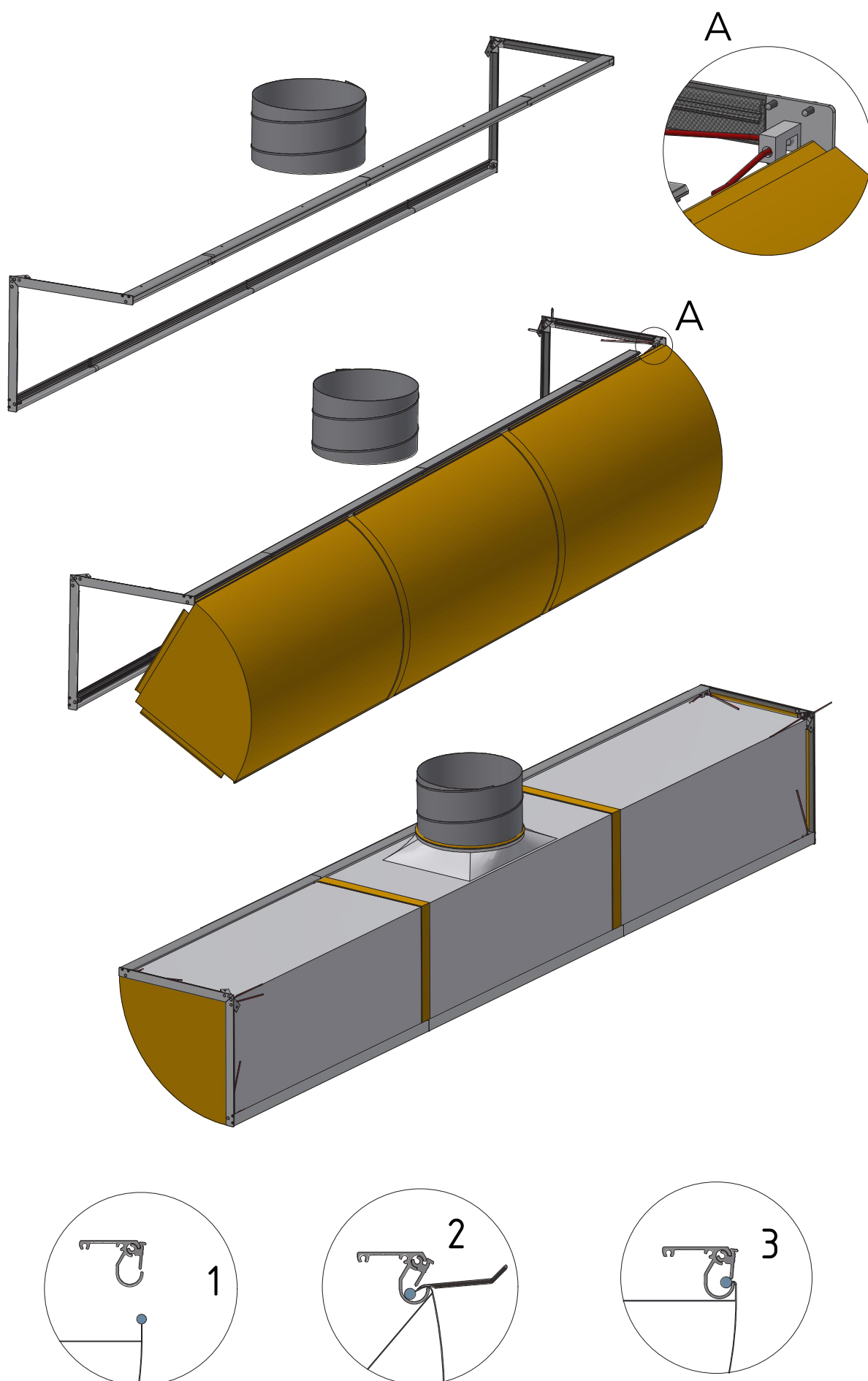
D-Alu for KE-½D Interior System (Rail Assembly)

QA-0005-GB-04

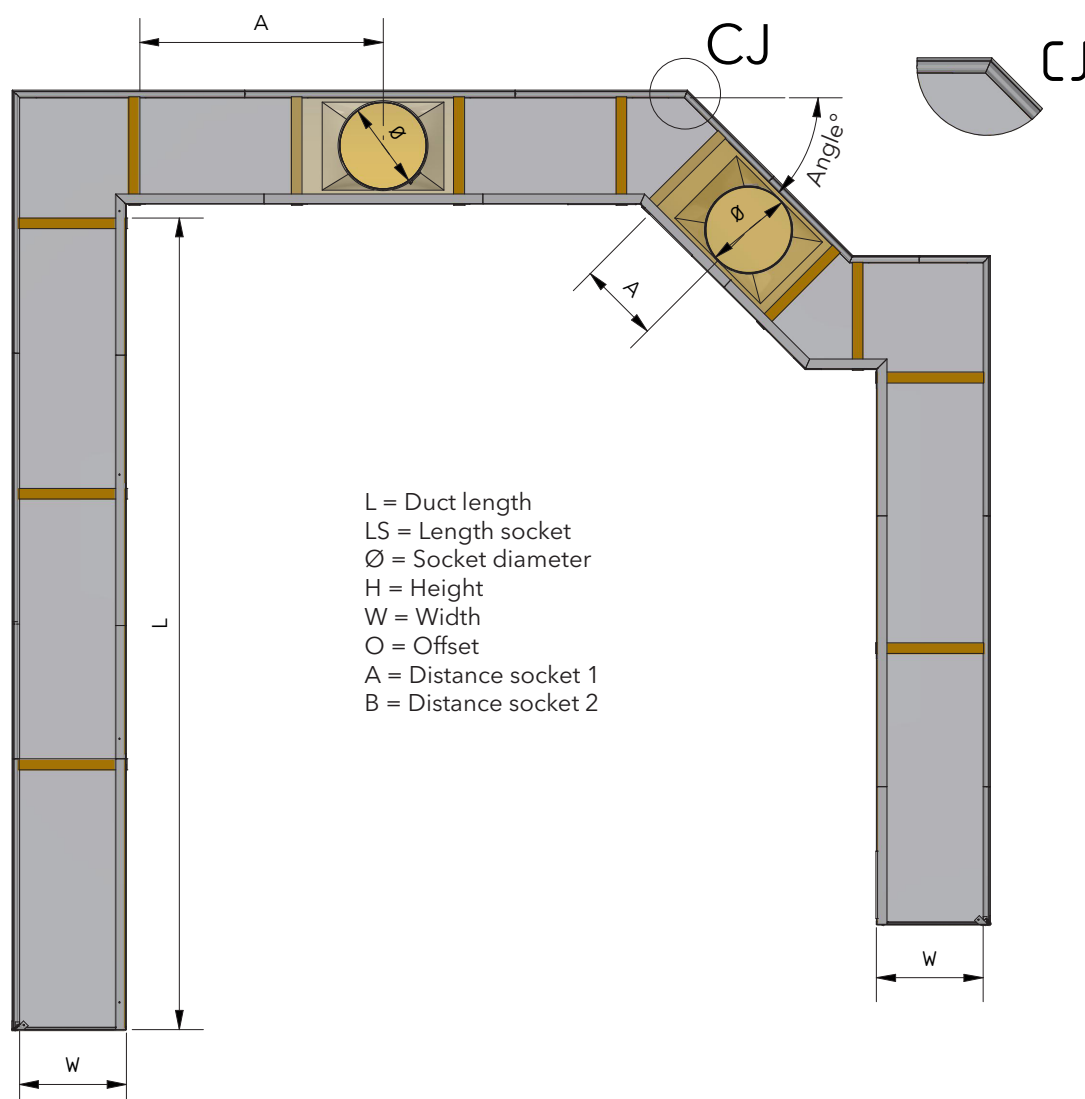
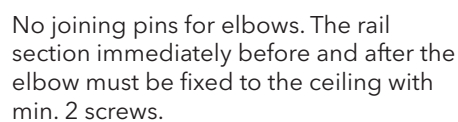


D-Alu for KE-1½D Interior System (Mounting of duct)

QA-0006-GB-04



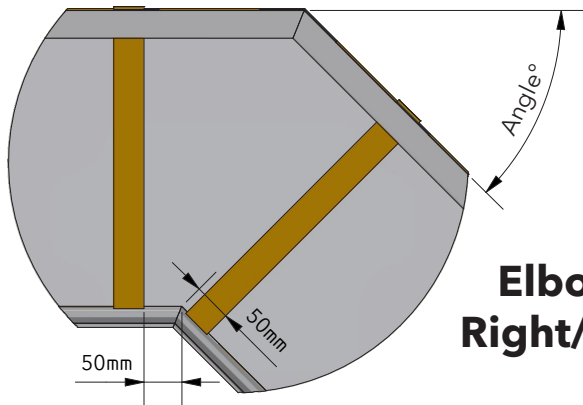
QA-0007-GB-04



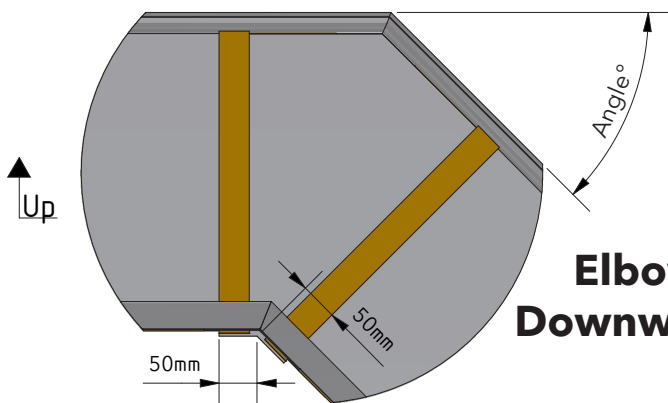
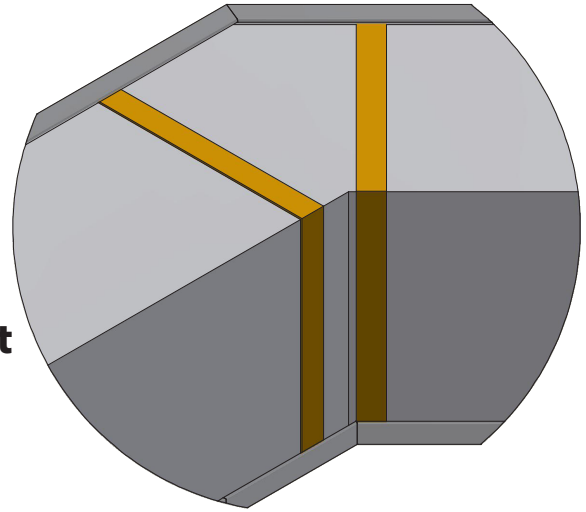
D-Alu Suspension for KE-½D Interior System (Elbow)

QA-0008-GB-04

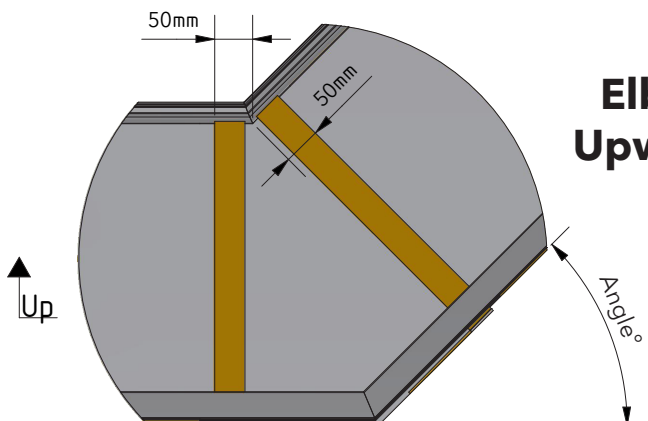
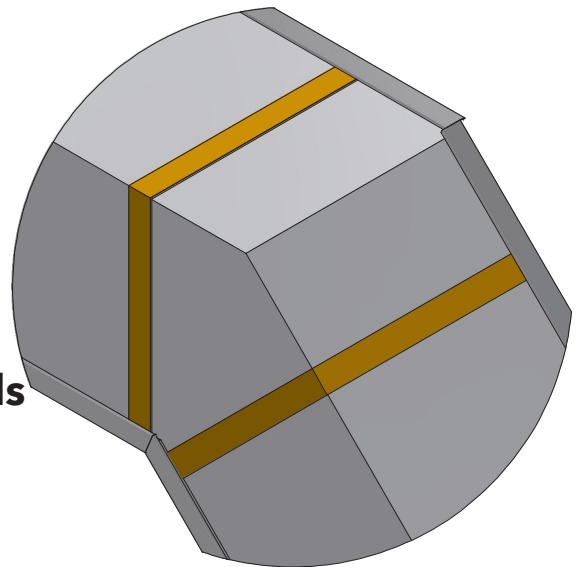
See delivery note for specific angle



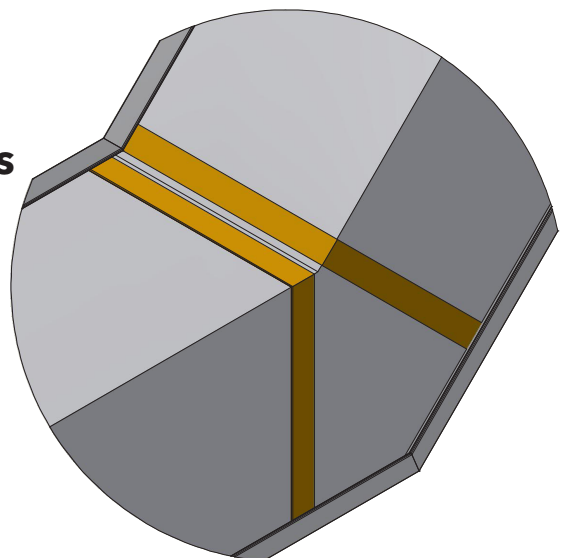
**Elbow
Right/Left**



**Elbow
Downwards**



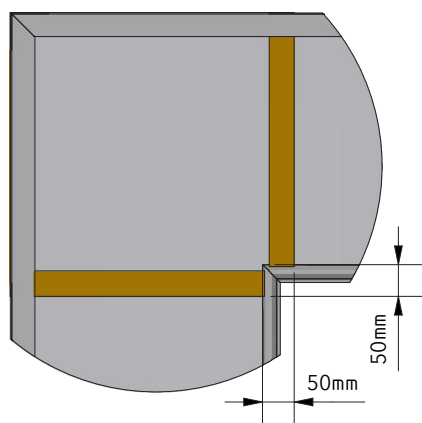
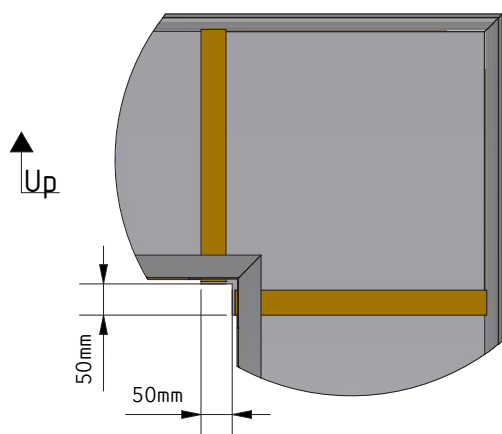
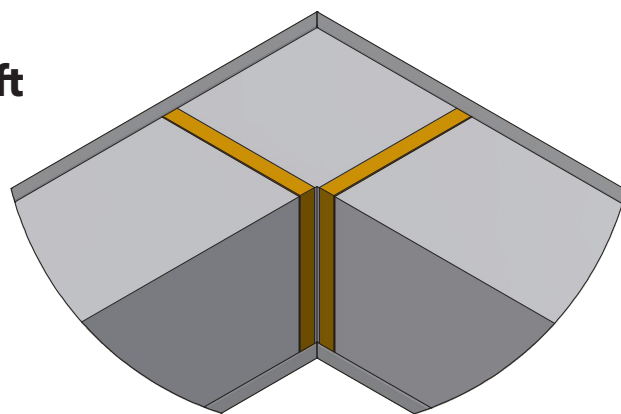
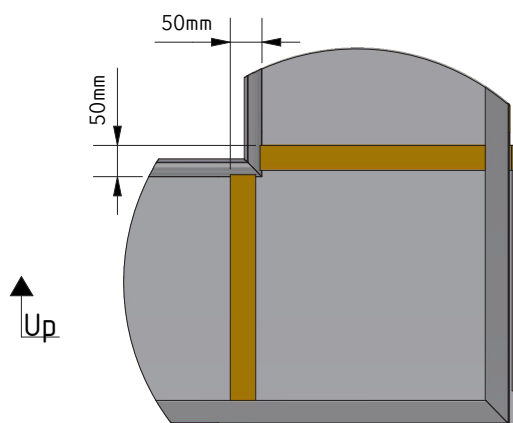
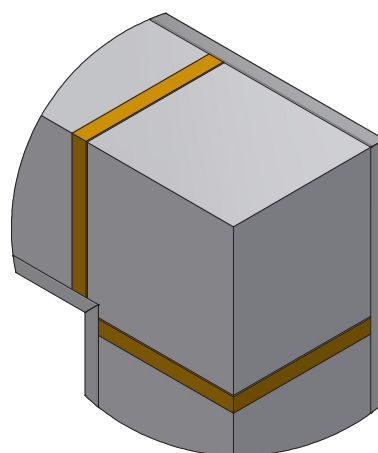
**Elbow
Upwards**



D-Alu for KE-1½D Interior System (Elbow 90°)

AIR THE WAY YOU WANT

QA-0009-GB-04

**Elbow
Right/Left****Elbow
Downwards****Elbow
Upwards**