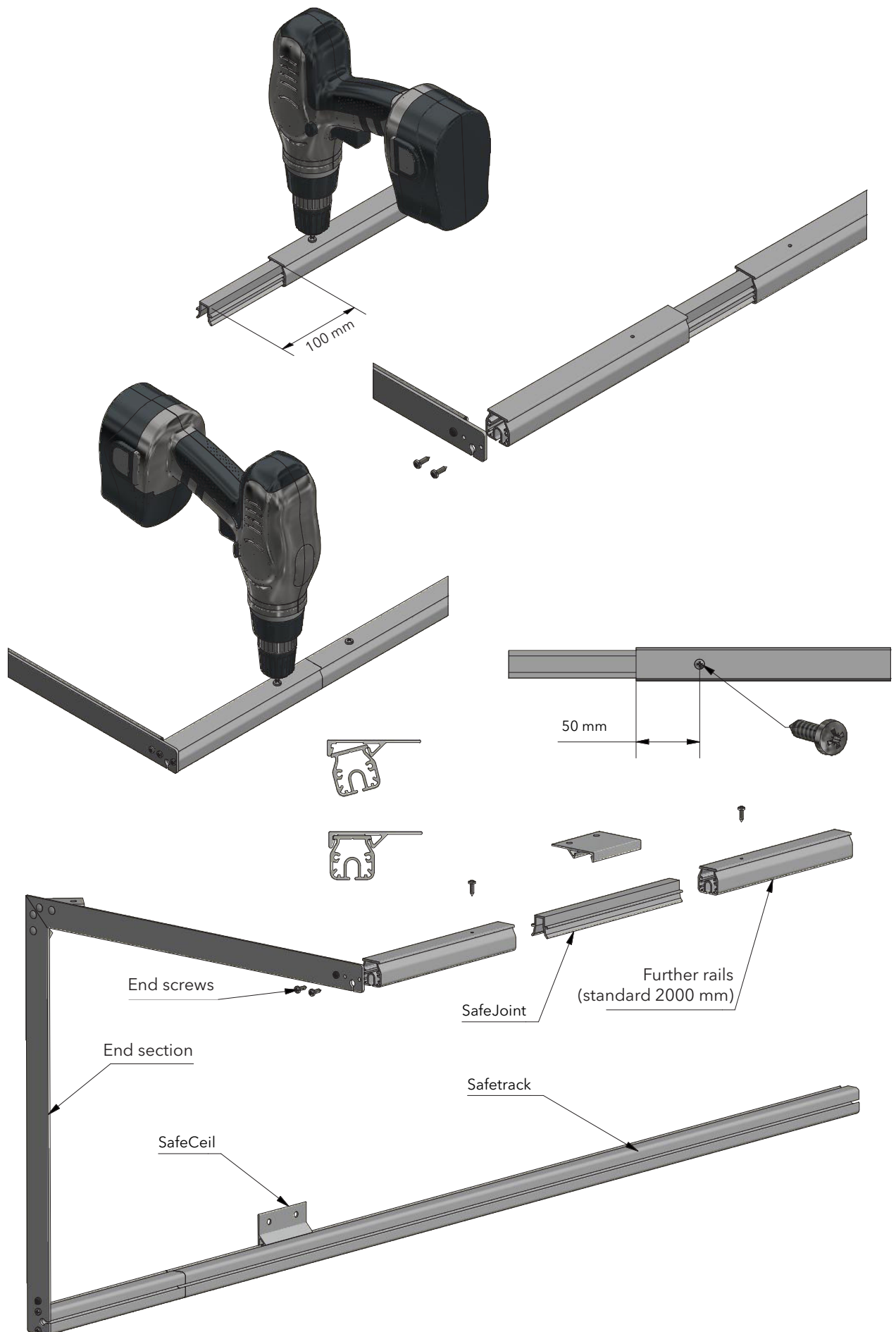


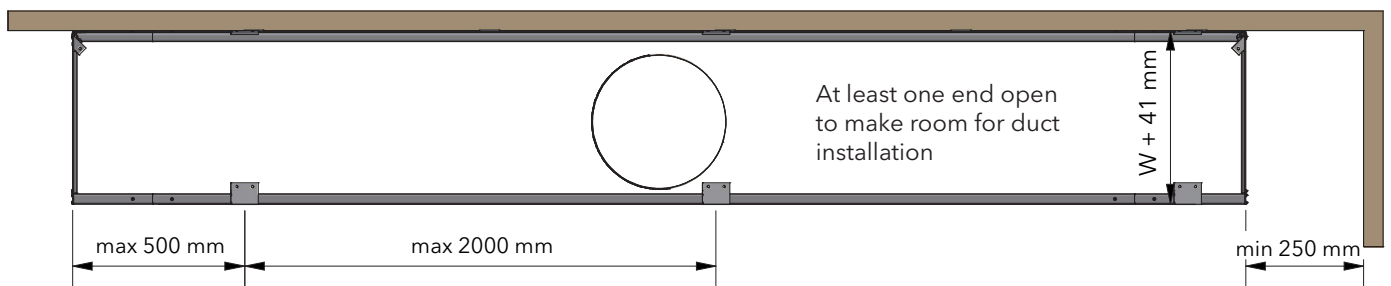
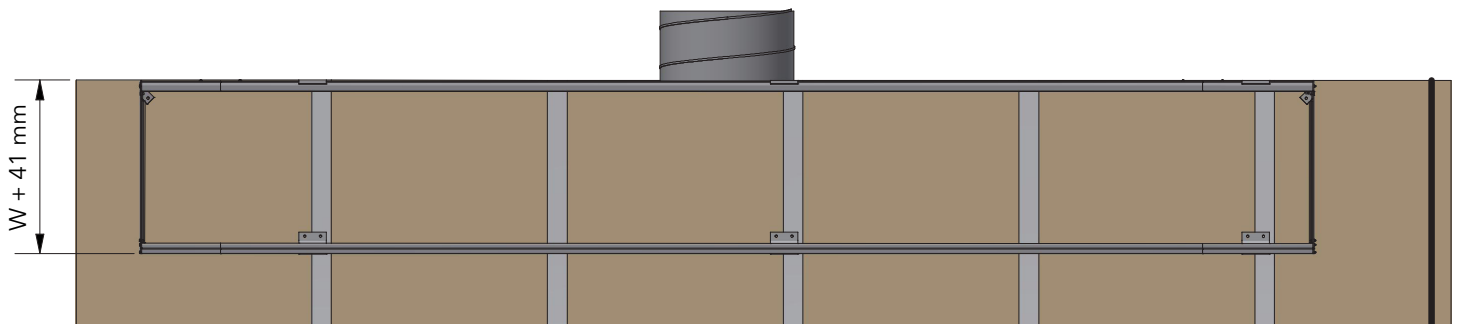
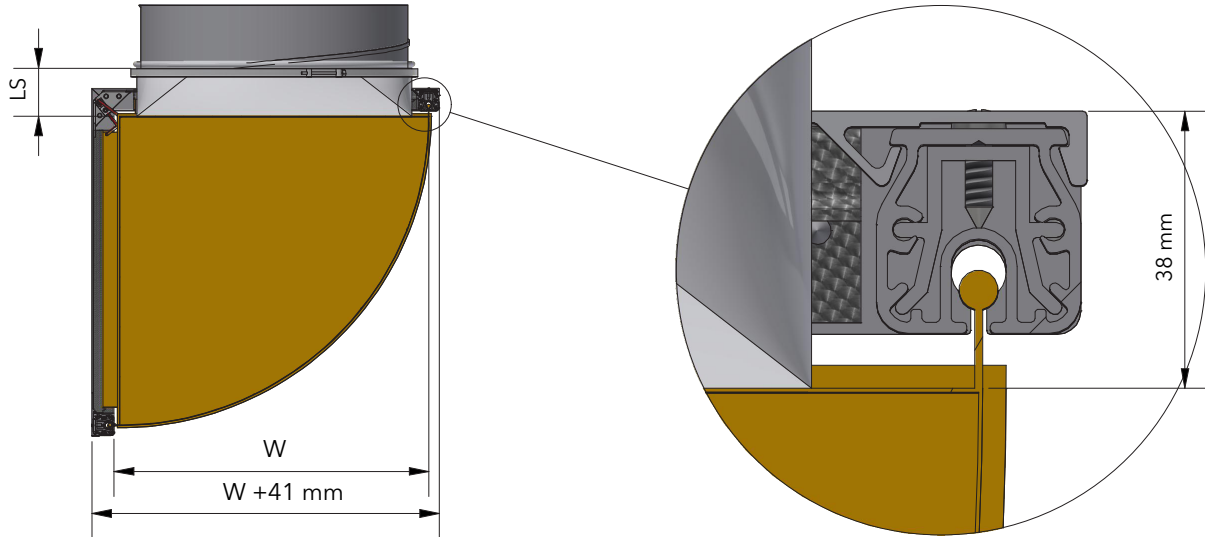
# D-Safetrack for KE-½D Interior System

QS-0003-GB-03



# D-Safetrack for KE-½D Interior System (SafeCeil)

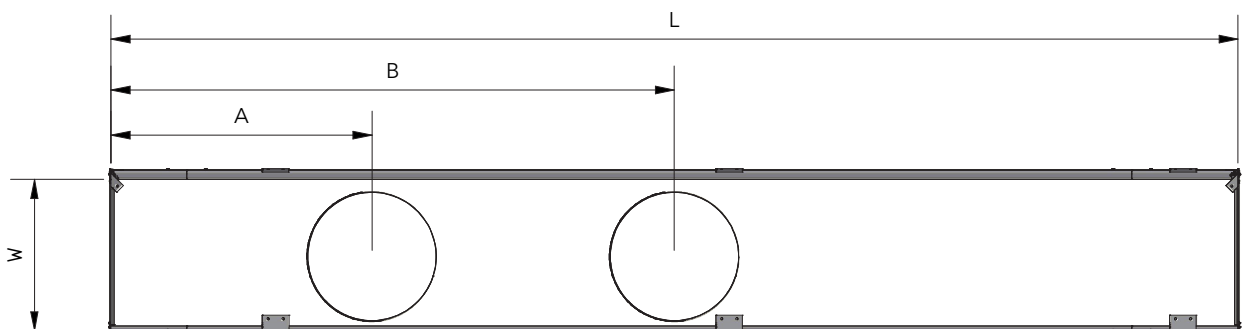
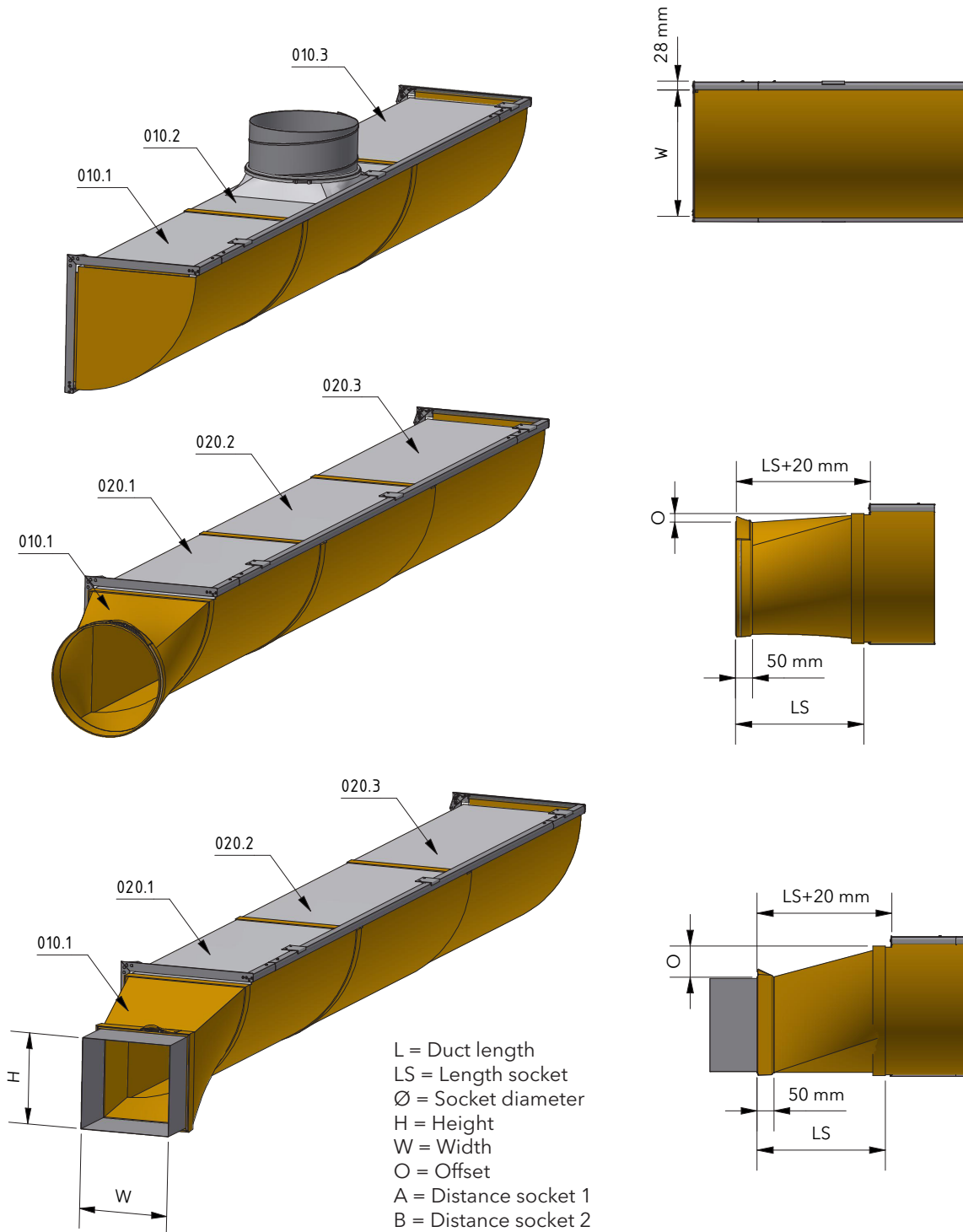
QS-0004-GB-03



L = Duct length  
 LS = Length socket  
 Ø = Socket diameter  
 H = Height  
 W = Width  
 O = Offset  
 A = Distance socket 1  
 B = Distance socket 2

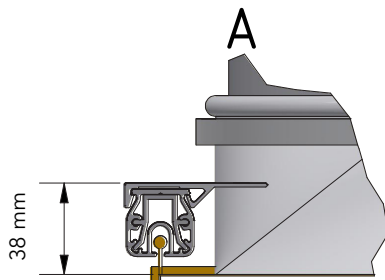
# D-Safetrack for KE-½D Interior System (Inlet Options)

QS-0005-GB-03

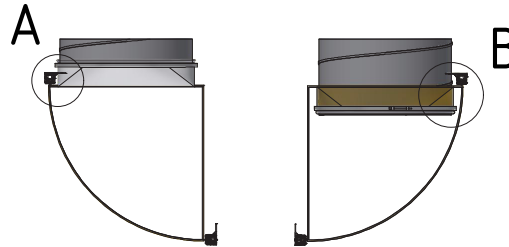


# D-Safetrack for KE-½D Interior System (Rail Assembly)

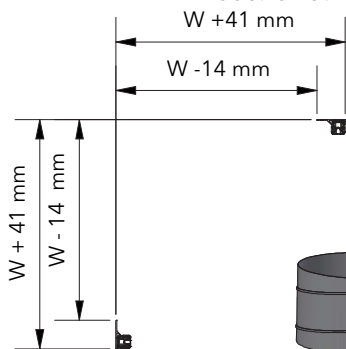
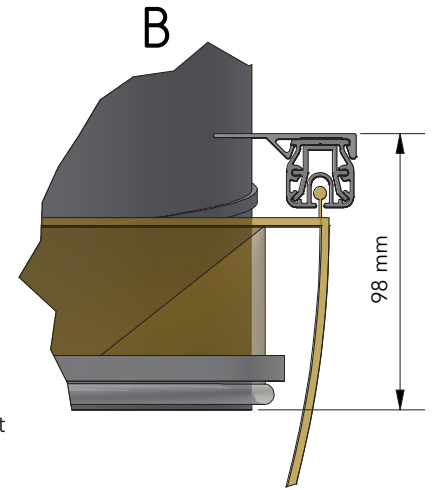
QS-0006-GB-03



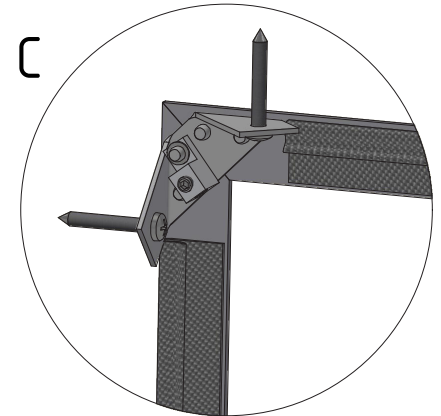
If it is possible to mount the socket above a false ceiling, a zipper near the socket on the duct is not necessary.



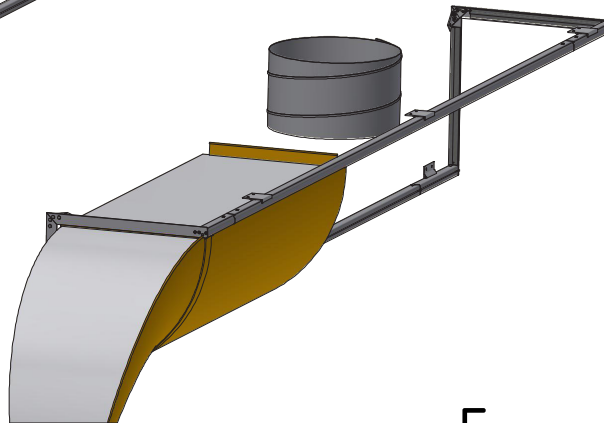
If mounting of the socket must be done from inside the space you must place at least 1 zipper close to the socket. Otherwise a service zipper must be placed in the arc of the duct.



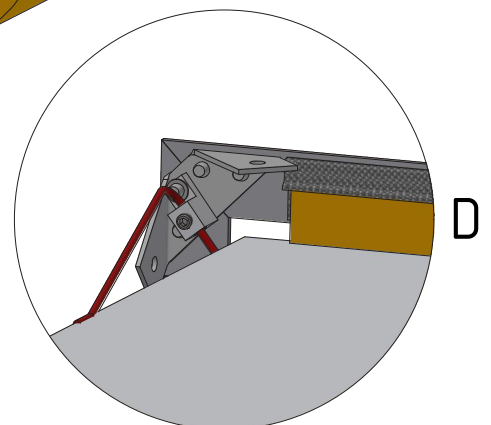
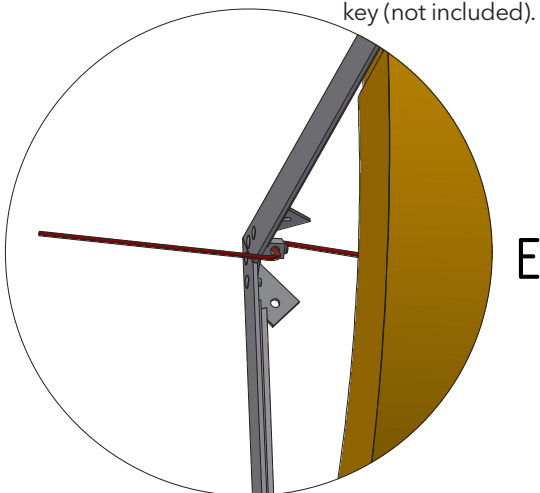
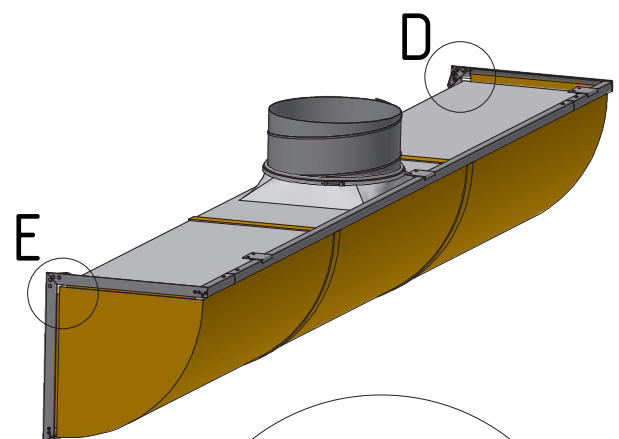
Fasten inner corner of rail to wall or ceiling with at least one screw.



L = Duct length  
LS = Length socket  
Ø = Socket diameter  
H = Height  
W = Width  
O = Offset  
A = Distance socket 1  
B = Distance socket 2

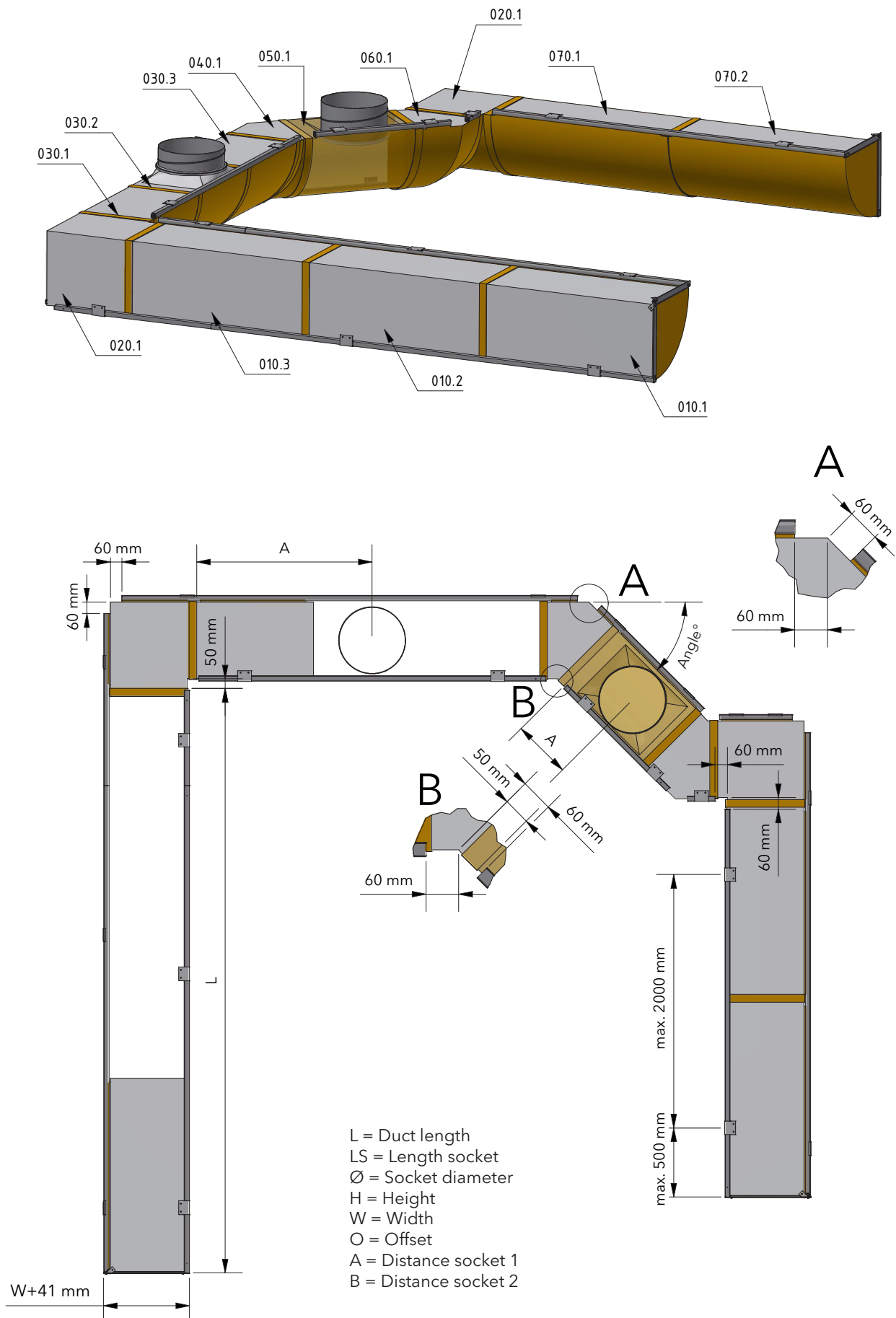


Feed cord through hole. Pull/ push the duct along the rails until reaching the end section. Tighten the grub screw with a 3 mm Allen key (not included).



# D-Safetrack for KE-1½D Interior System (Plenum)

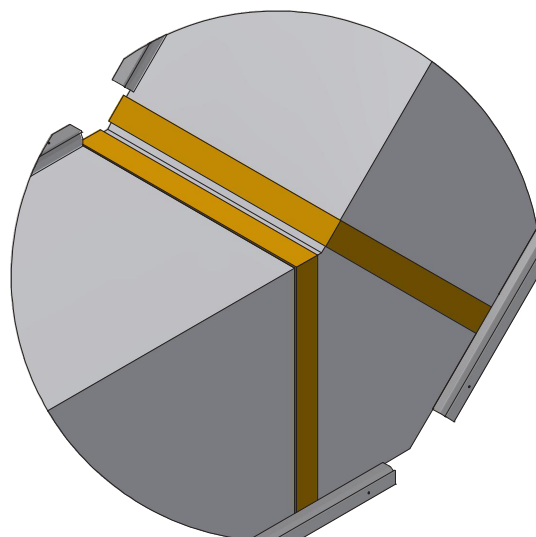
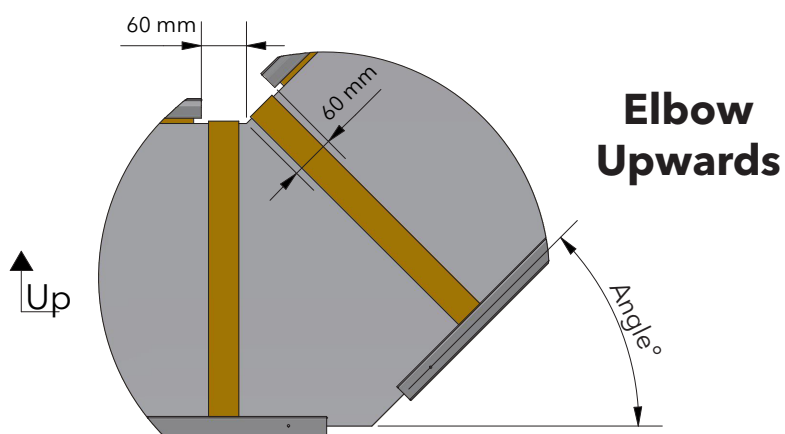
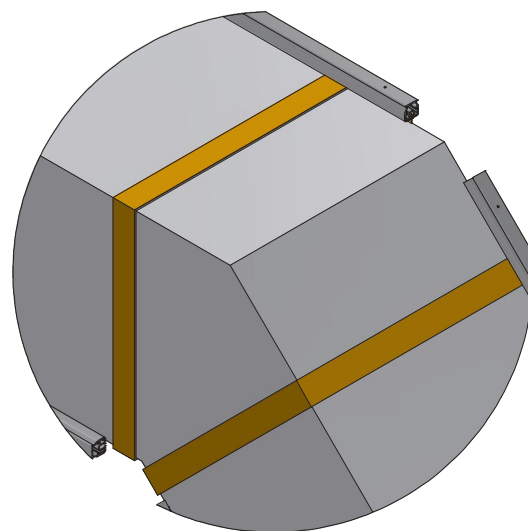
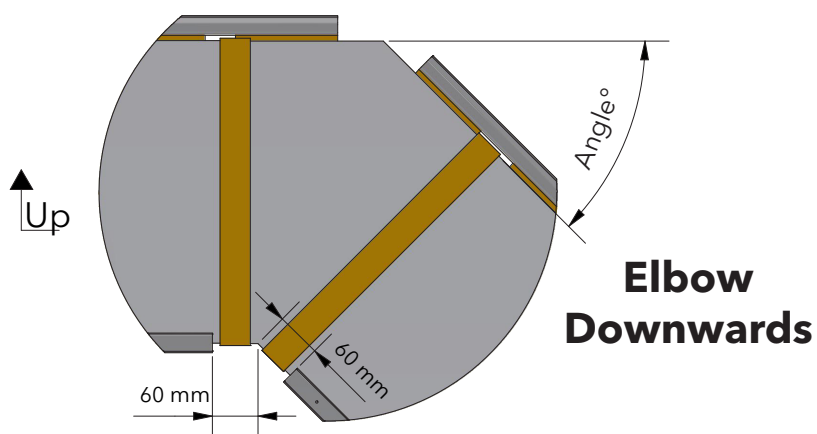
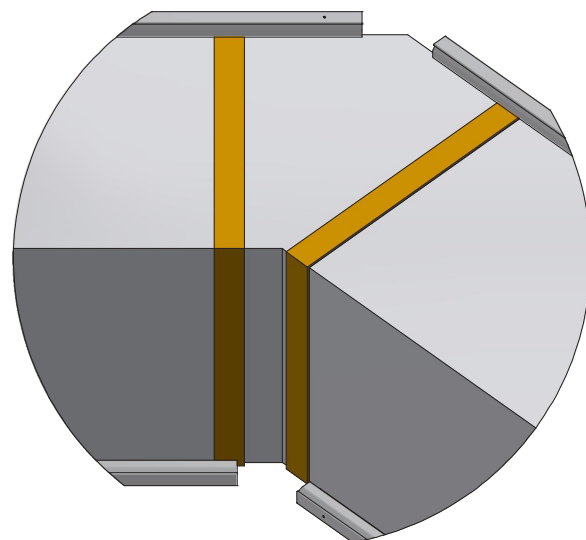
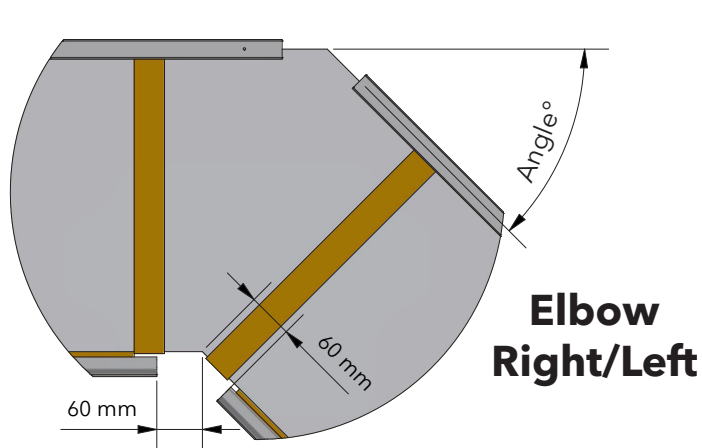
QS-0007-GB-03



# D-Safetrack for KE-½D Interior System (Elbow)

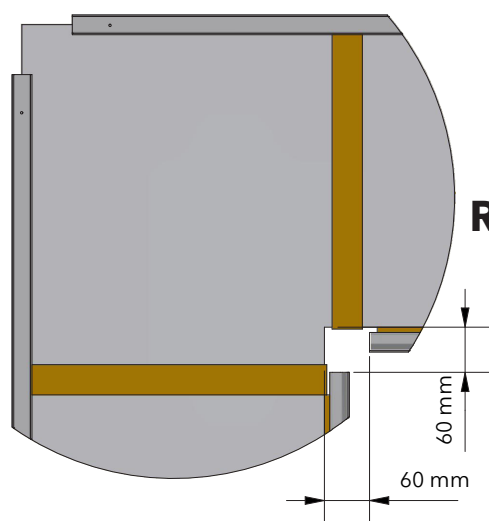
QS-0008-GB-03

See delivery note for specific angle

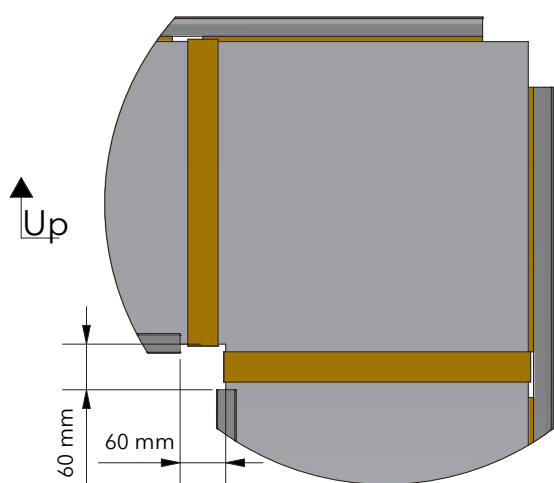
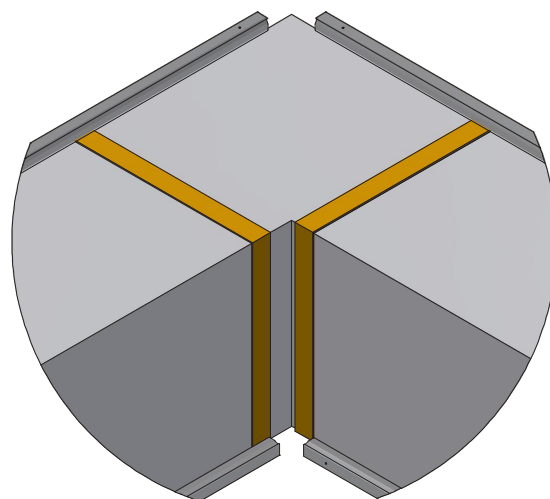


# D-Safetrack for KE-½D Interior System (Elbow 90°)

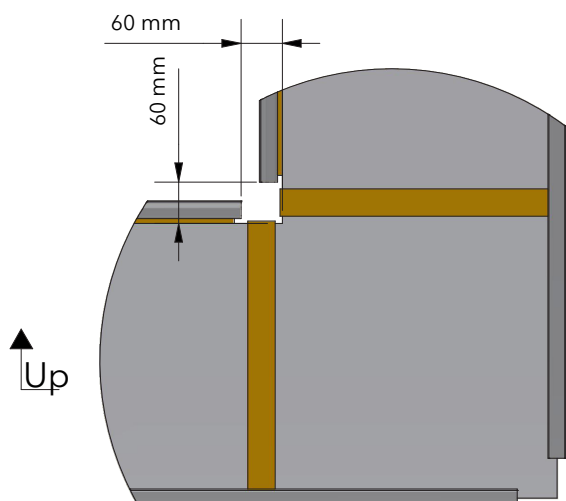
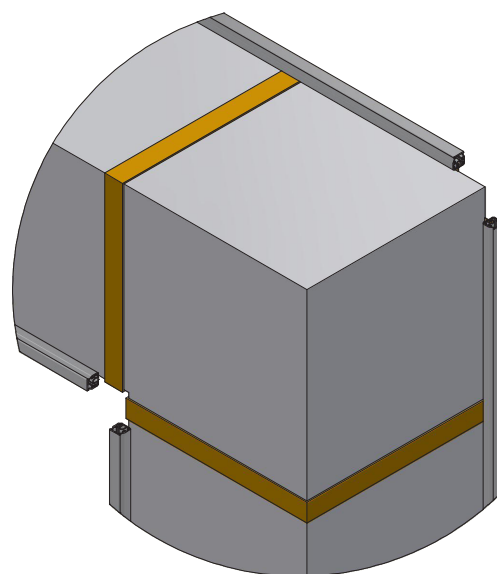
QS-0009-GB-03



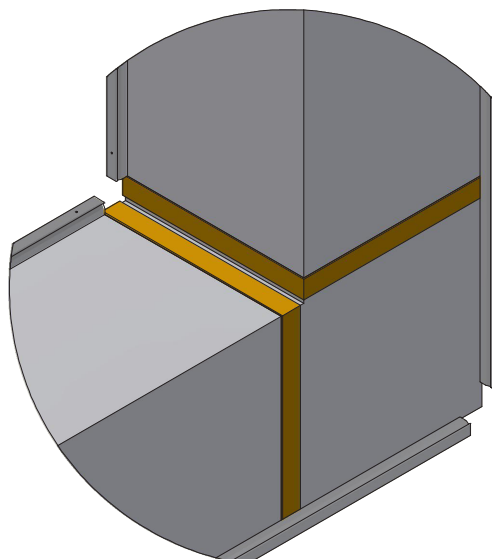
**Elbow  
Right/Left**



**Elbow  
Downwards**



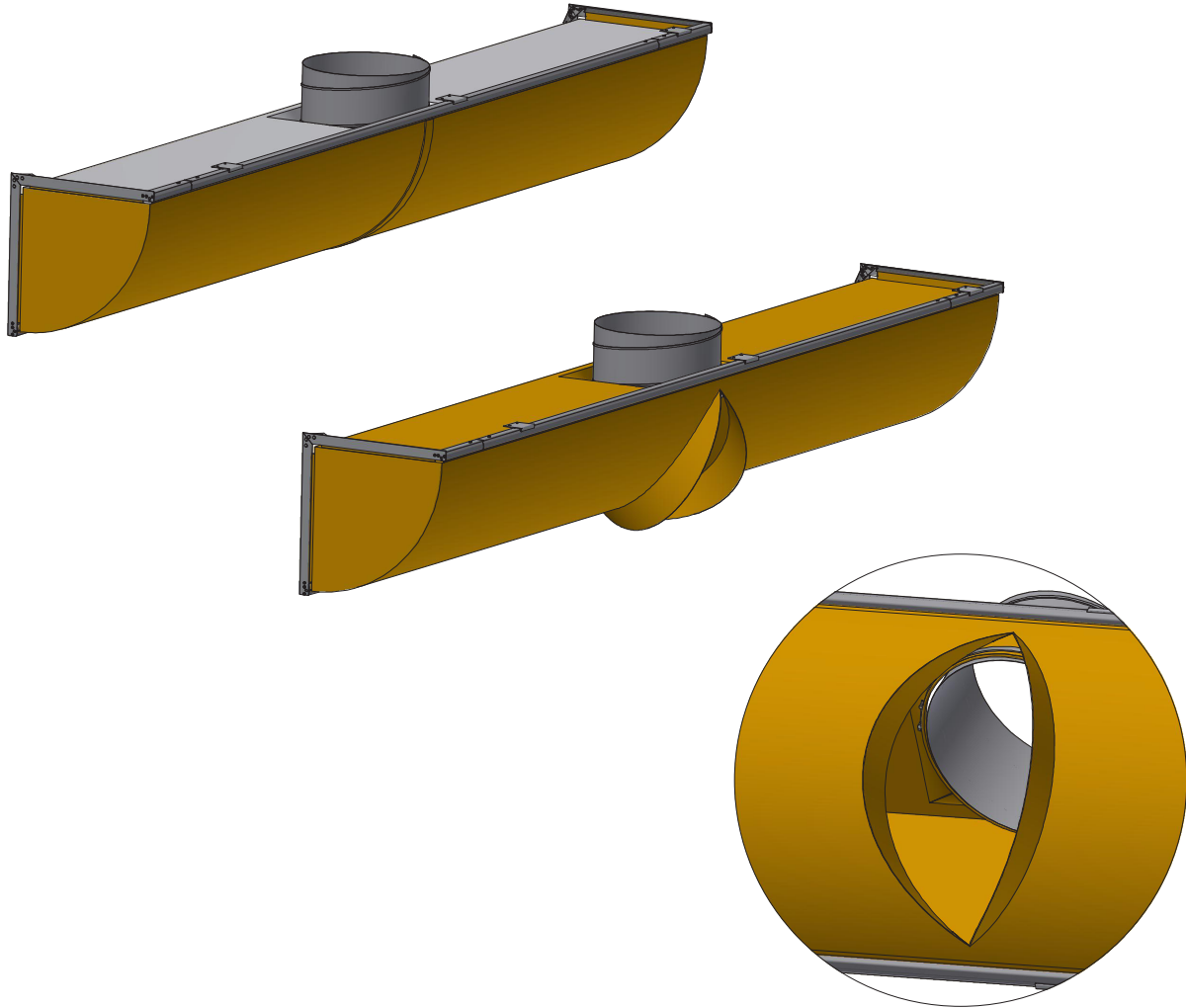
**Elbow  
Upwards**



## D-Safetrack for KE-½D Interior System (Service Zipper)

QS-0010-GB-03

D-Safetrack ½D-Duct with Service Zipper



D-Safetrack ½D-Duct with Zipper

