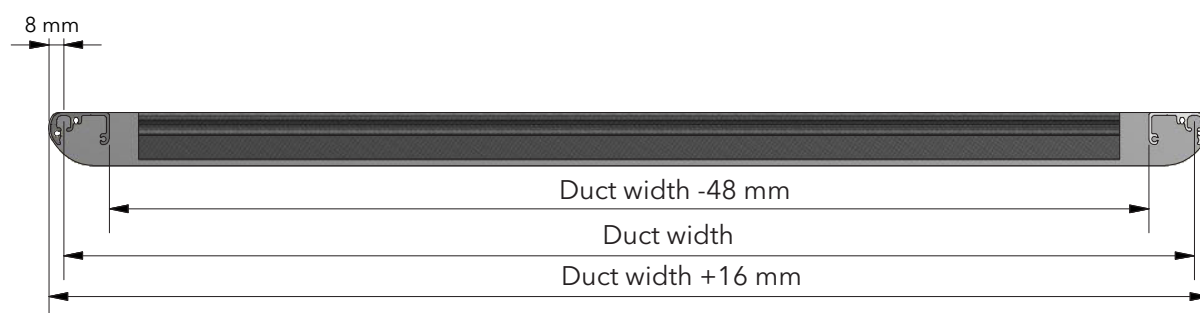
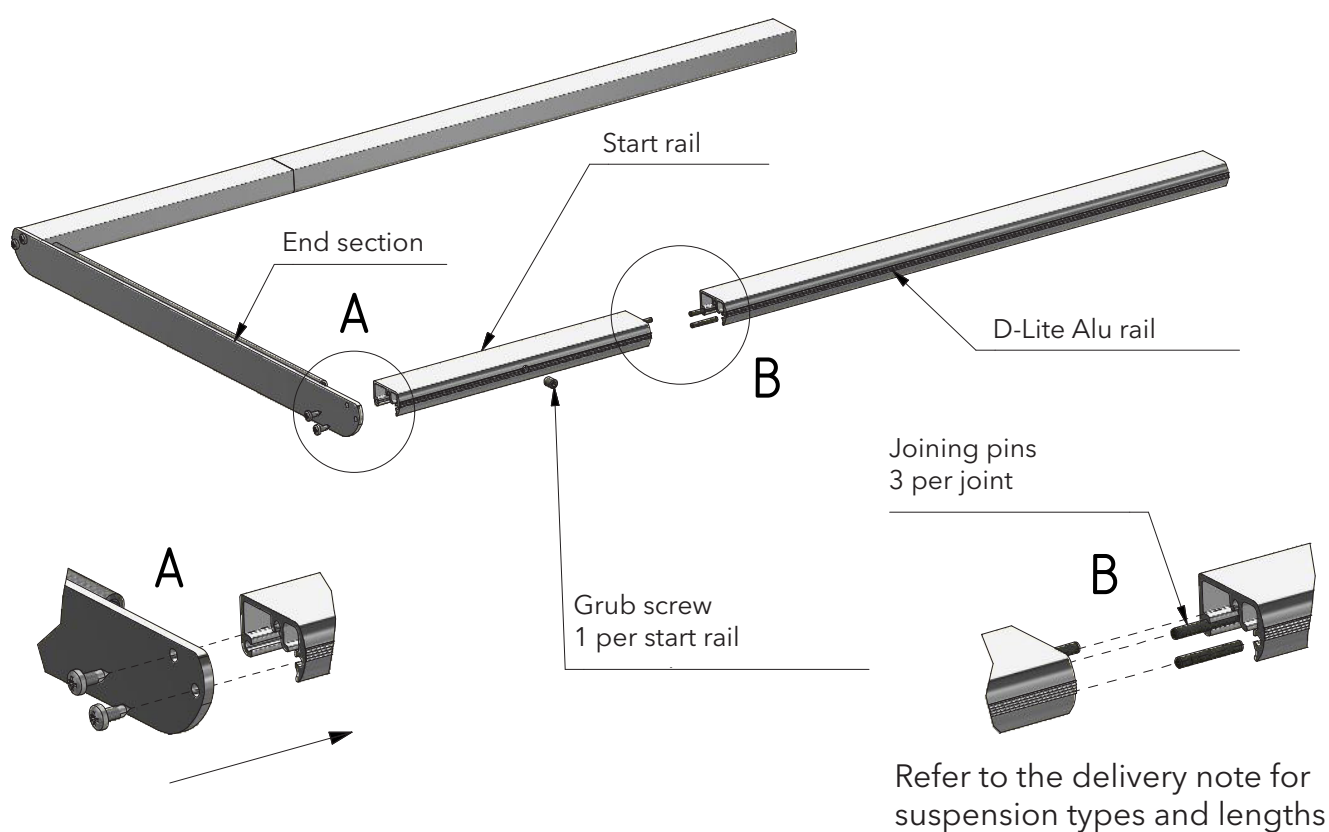


D-Lite Alu Suspension for KE-Interior System

DL-0003-GB-03

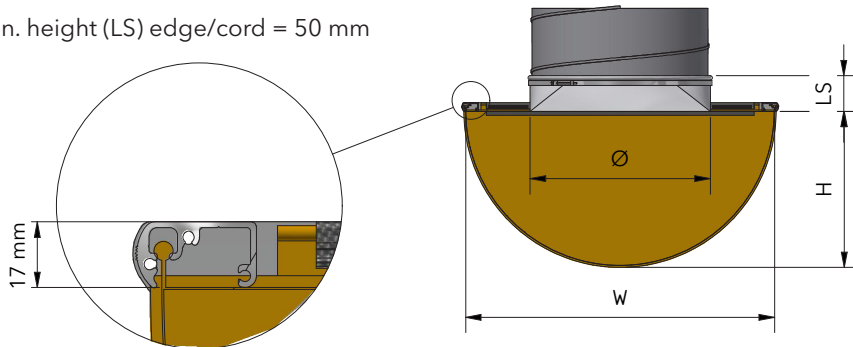
Install rail system according to drawings
and enclosed mounting instructions



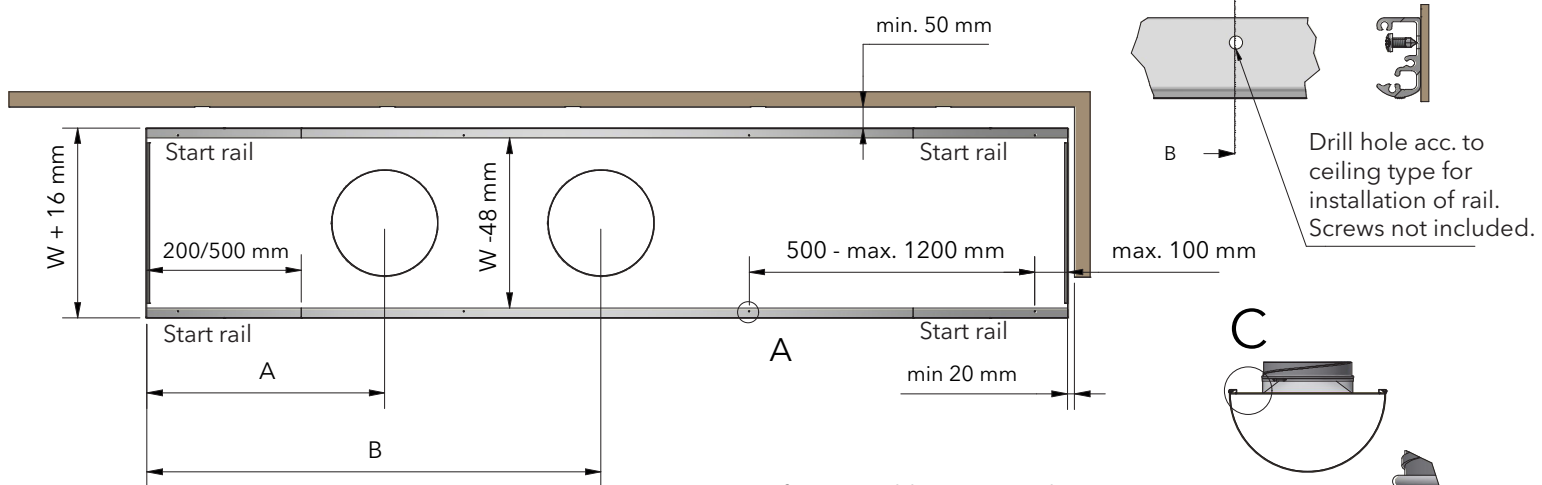
D-Lite Alu for KE-Interior System (Straight Duct)

DL-0004-GB-03

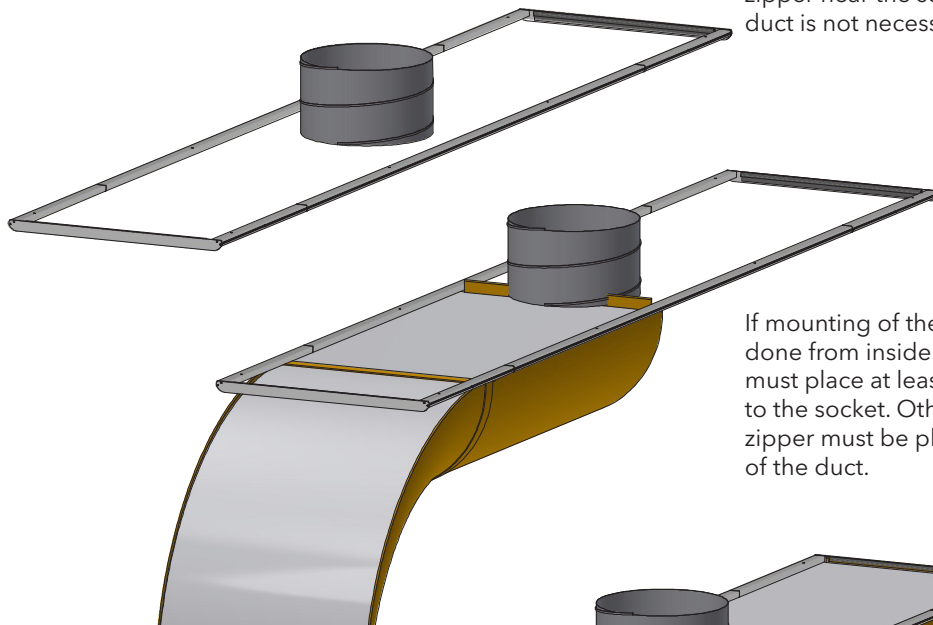
Min. height (LS) edge/cord = 50 mm



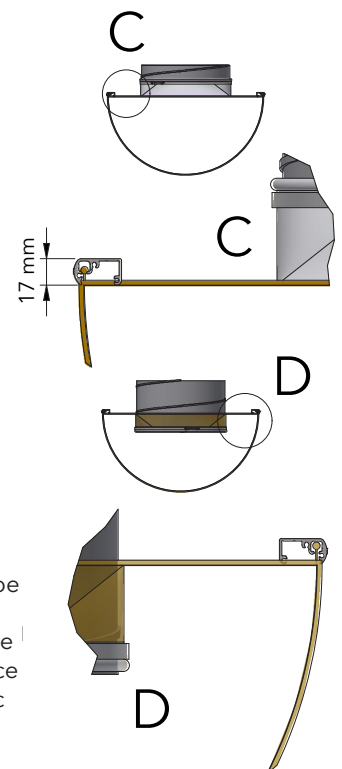
L = Duct length
 LS = Length socket
 Ø = Socket diameter
 H = Height
 W = Width
 O = Offset
 A = Distance socket 1
 B = Distance socket 2



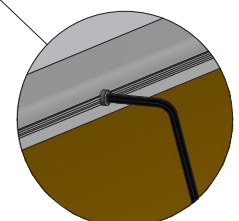
If it is possible to mount the socket above a false ceiling, a zipper near the socket on the duct is not necessary.



If mounting of the socket must be done from inside the space you must place at least 1 zipper close to the socket. Otherwise a service zipper must be placed in the arc of the duct.

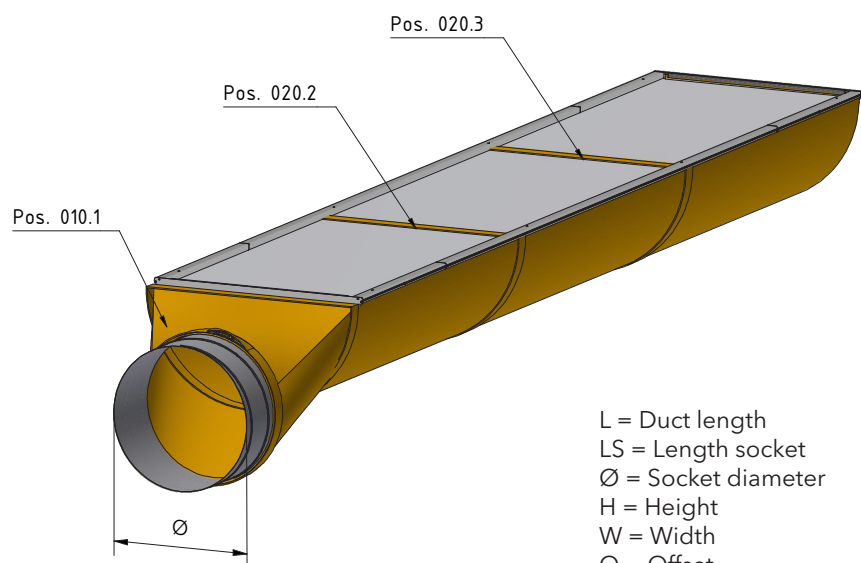


Upon properly installing the textile duct, tighten the grub screws with a 3 mm Allen key (not included).

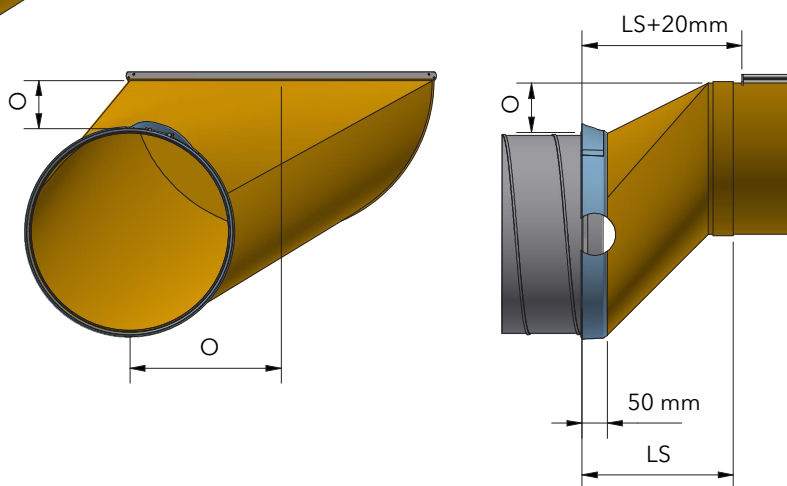
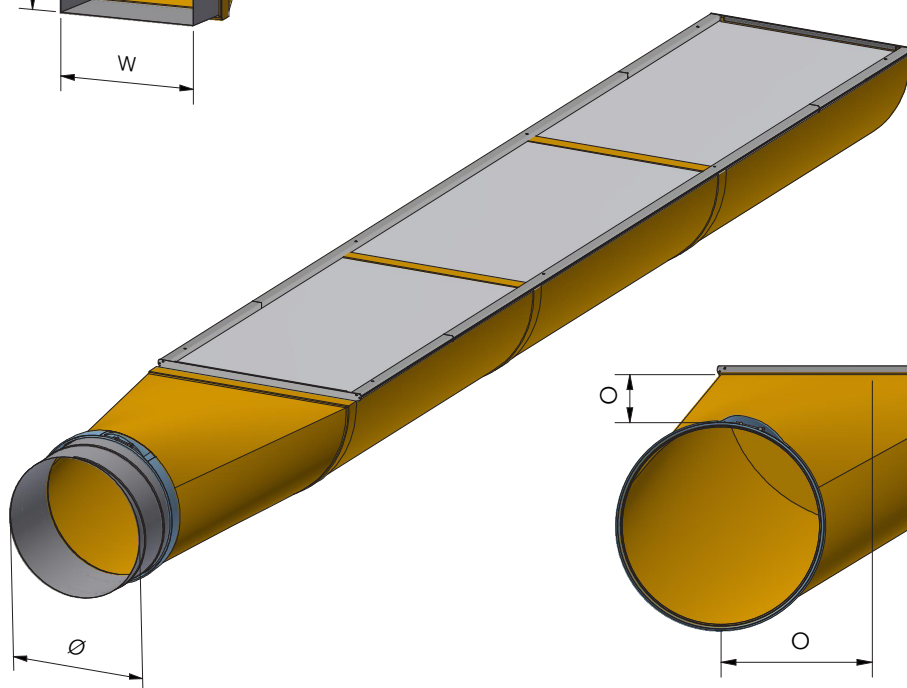
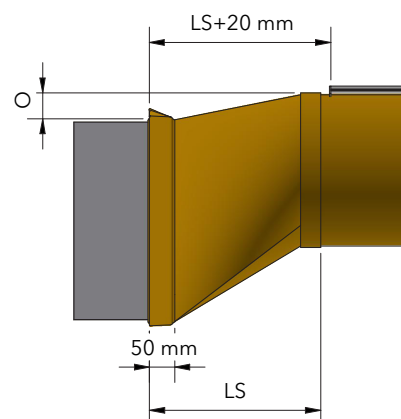
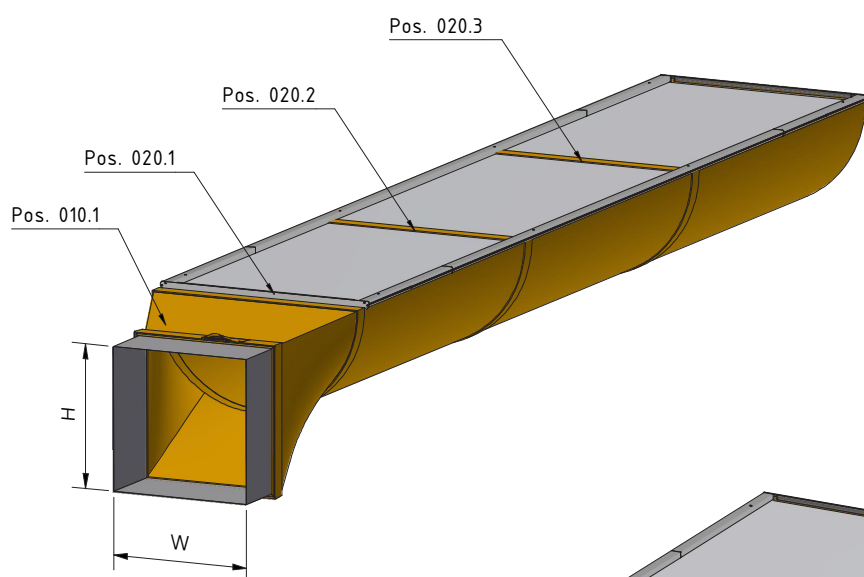
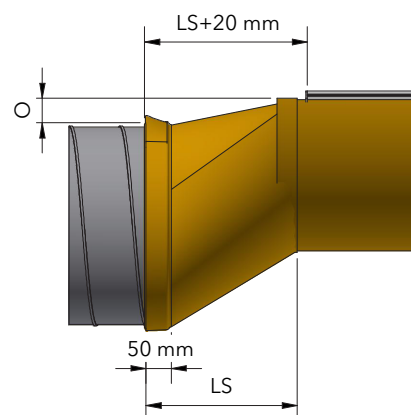


D-Lite Alu for KE-Interior System (Inlet Options)

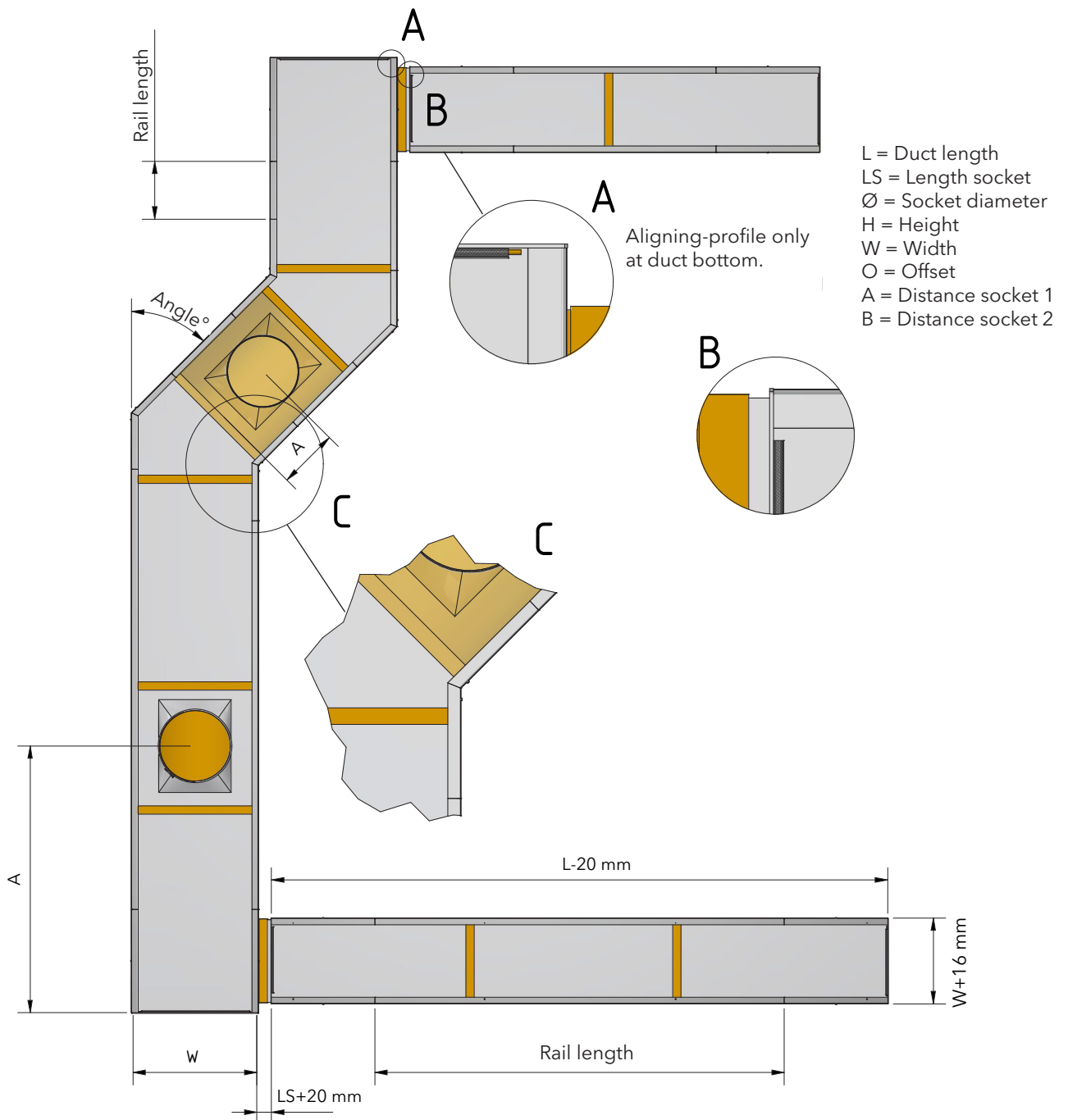
DL-0005-GB-03



L = Duct length
 LS = Length socket
 Ø = Socket diameter
 H = Height
 W = Width
 O = Offset
 A = Distance socket 1
 B = Distance socket 2



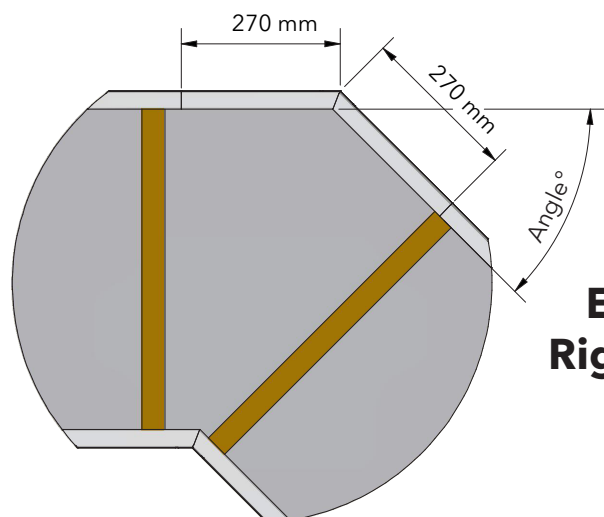
DL-0006-GB-03



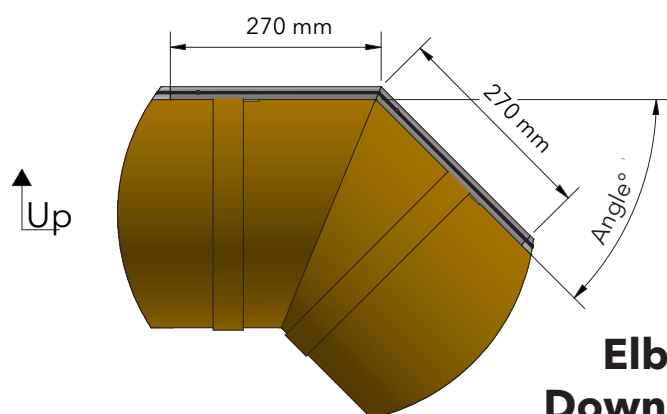
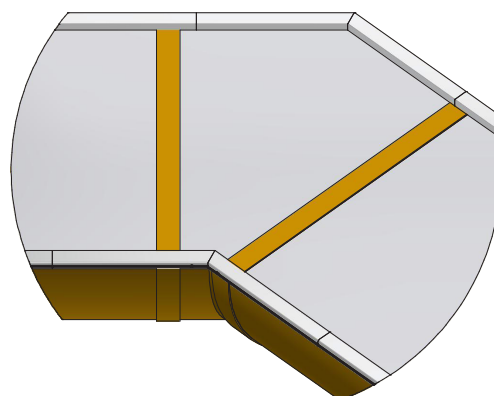
D-Lite Alu Suspension for KE-Interior System (Elbow)

DL-0007-GB-03

See delivery note for specific angle

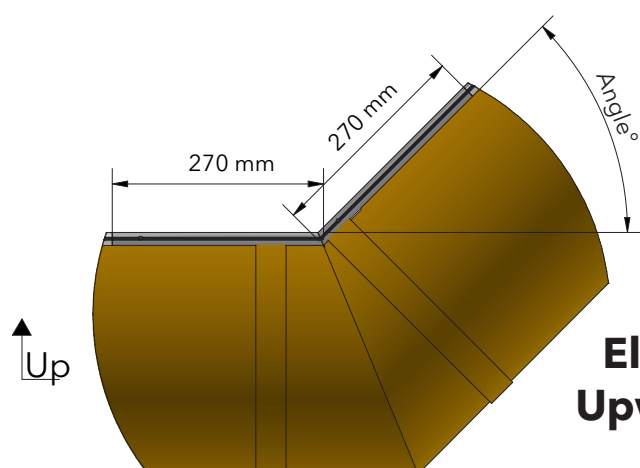
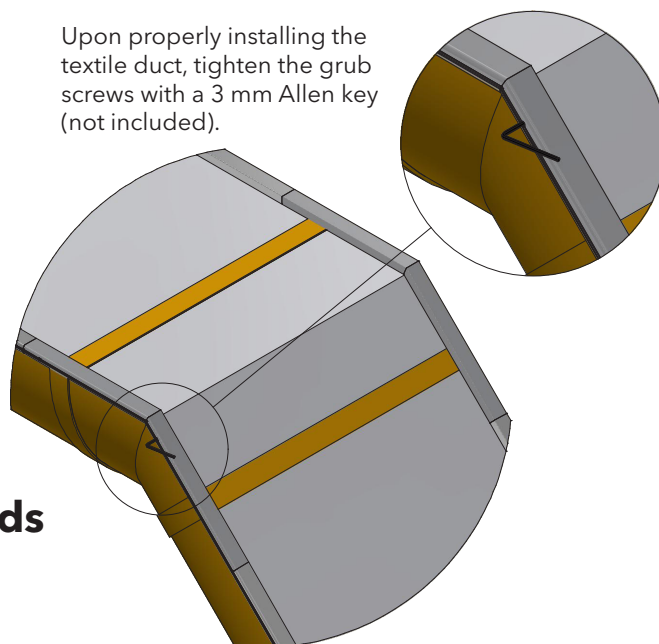


**Elbow
Right/Left**

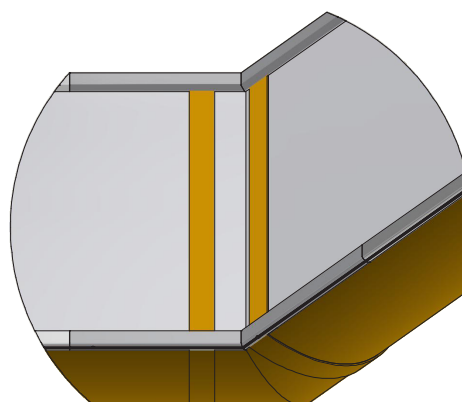


**Elbow
Downwards**

Upon properly installing the textile duct, tighten the grub screws with a 3 mm Allen key (not included).

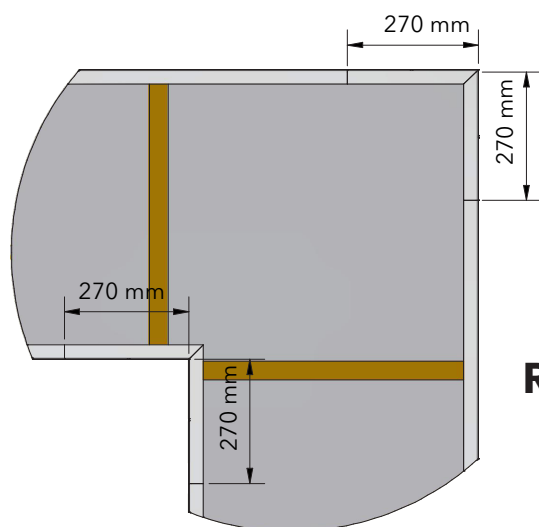


**Elbow
Upwards**

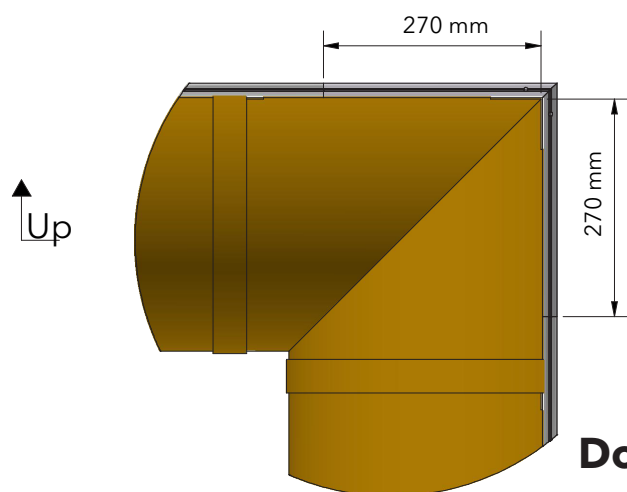
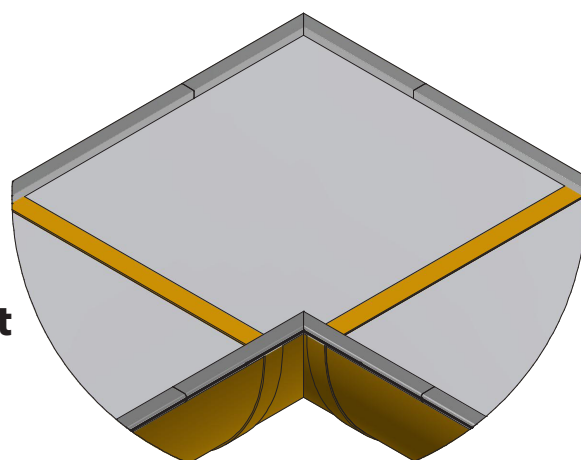


D-Lite Alu for KE-Interior System (Elbow 90°)

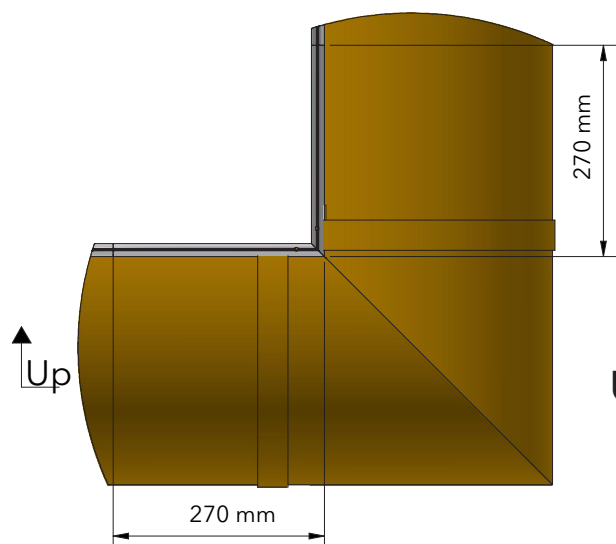
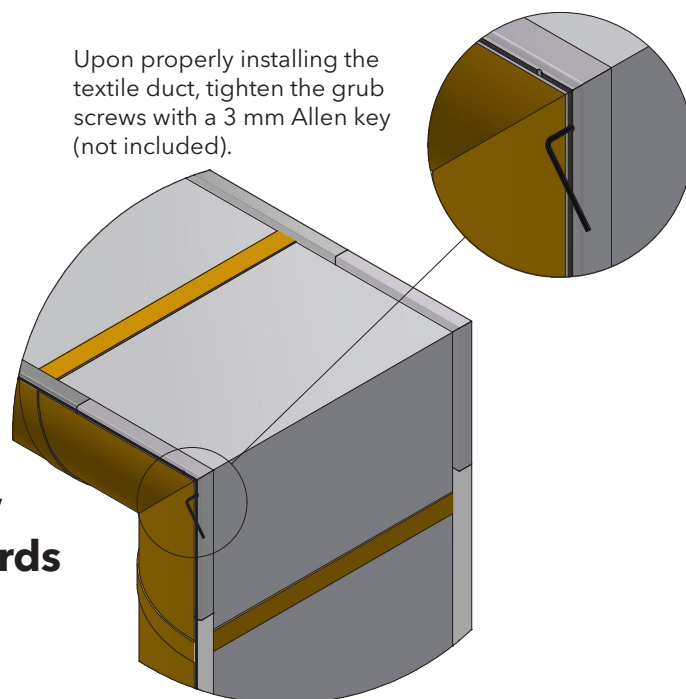
DL-0008-GB-03



**Elbow
Right/Left**



**Elbow
Downwards**



**Elbow
Upwards**

