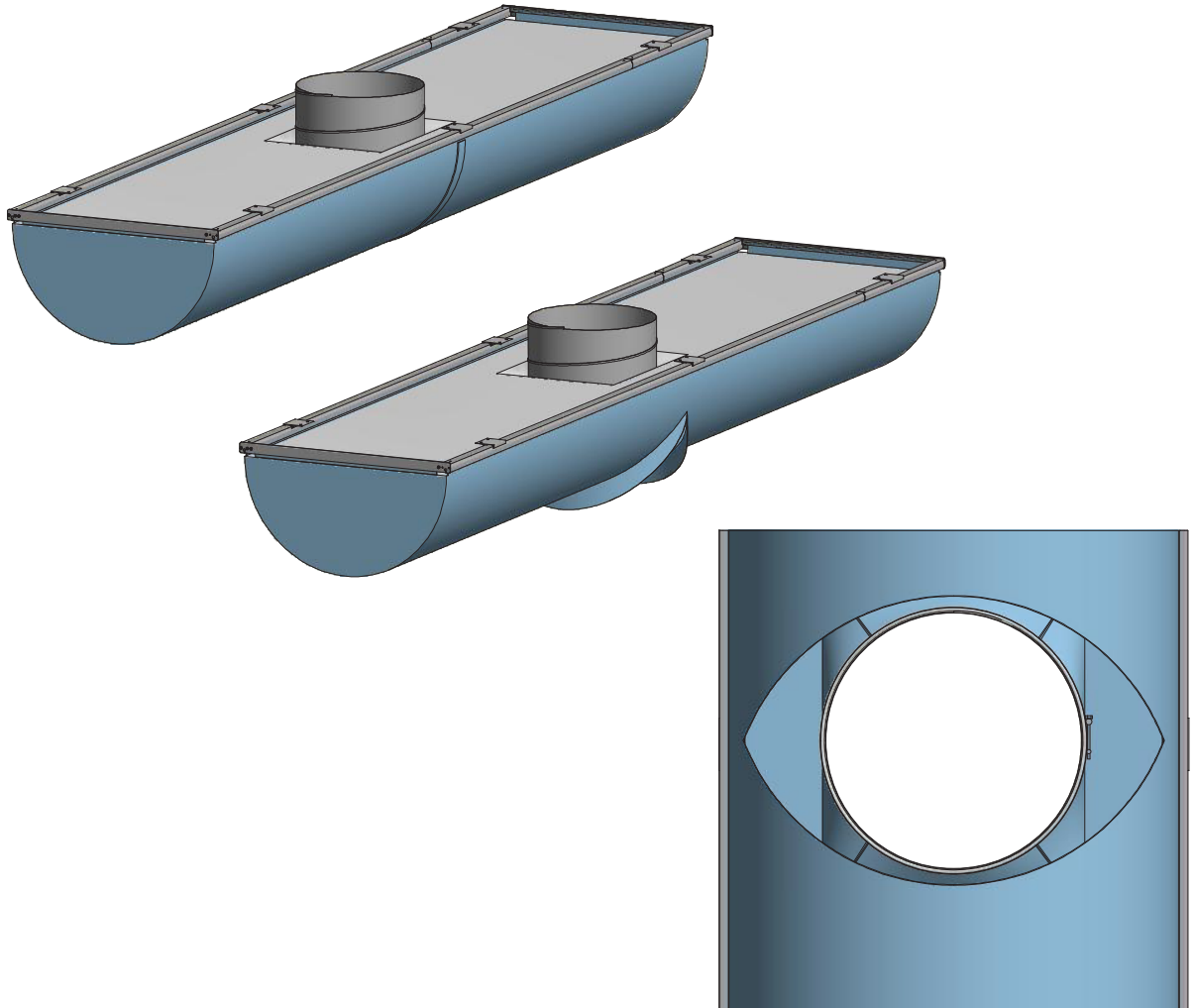


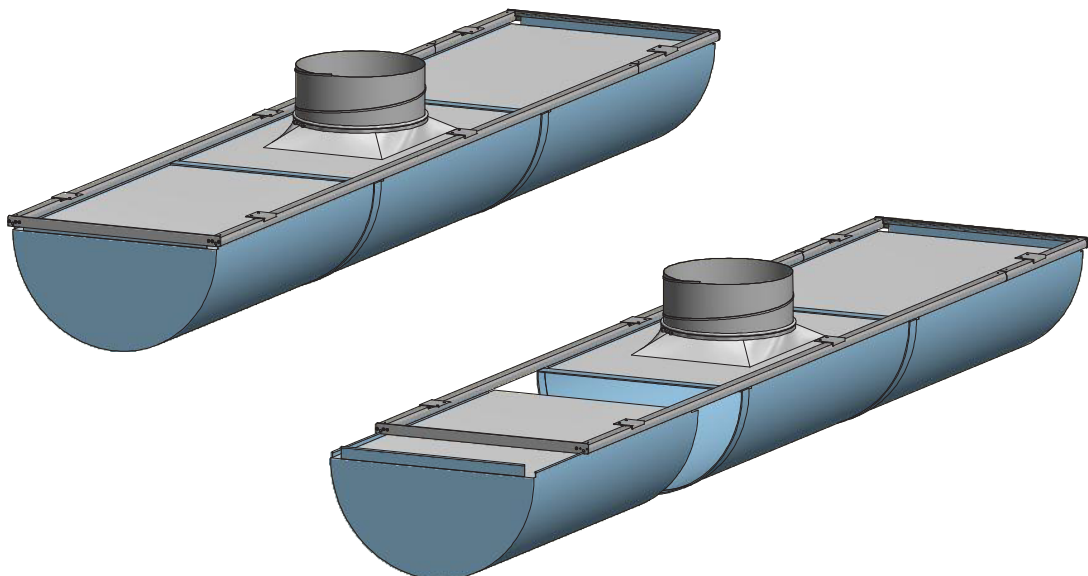
## D-Safetrack for KE-Interior System (Service Zipper)

DS-0010-GB-02

### Safetrack D-Duct with Service Zipper



### Safetrack D-Duct with Zipper

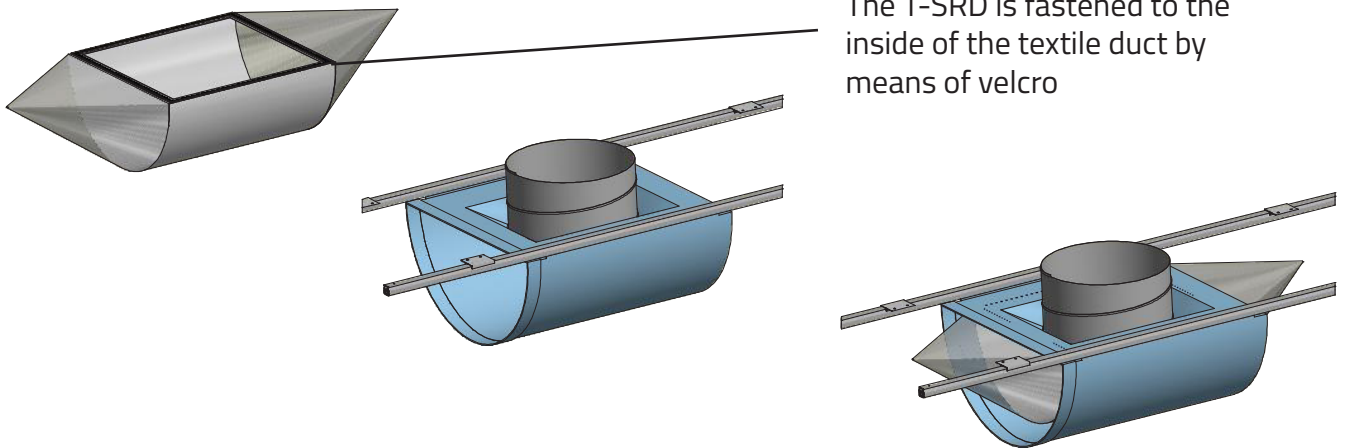


## D-Safetrack for KE-Interior System (KE-SRD)

DS-0011-GB-02

### Installation of T-SRD (top inlet)

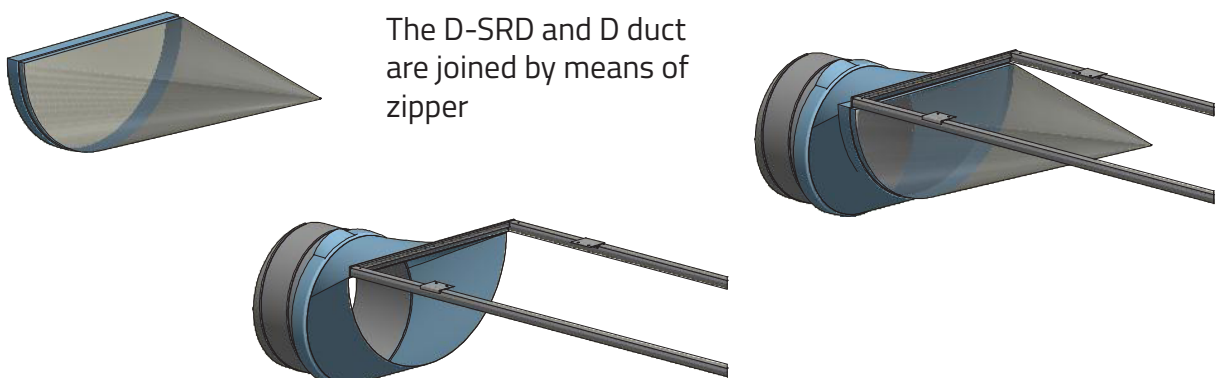
The T-SRD is optional



The T-SRD is fastened to the inside of the textile duct by means of velcro

### Installation of D-SRD (end inlet)

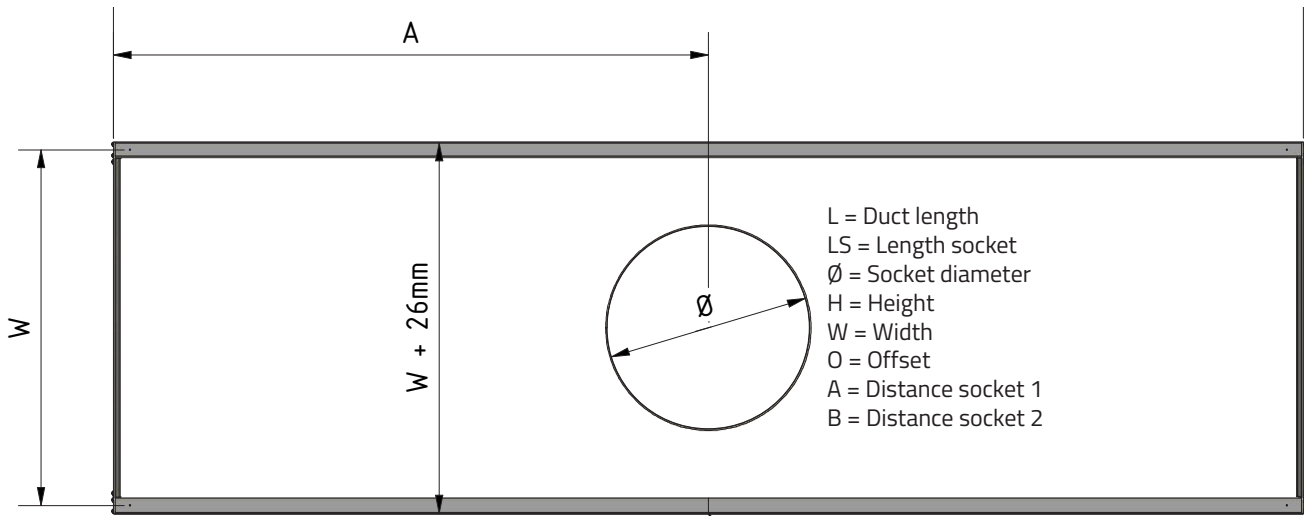
The D-SRD is optional



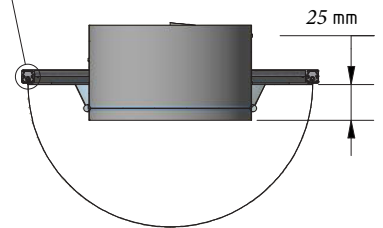
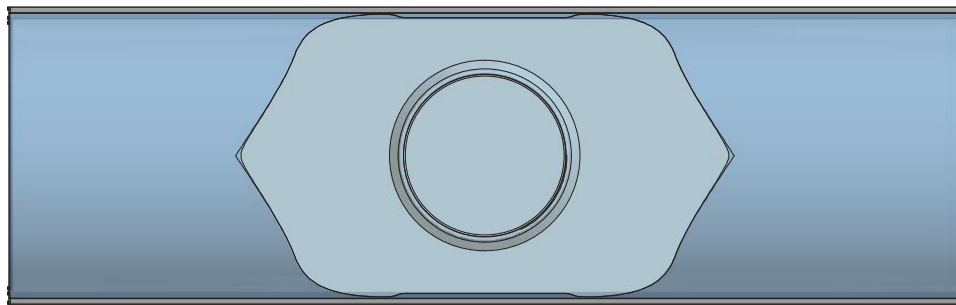
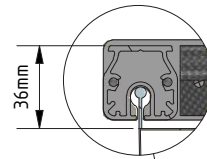
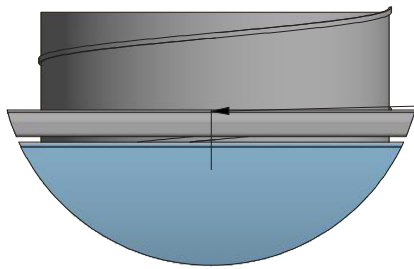
The D-SRD and D duct are joined by means of zipper

# D-Safetrack for KE-Interior System (Inlet socket with spring lock)

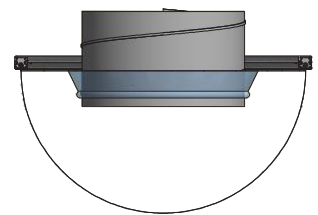
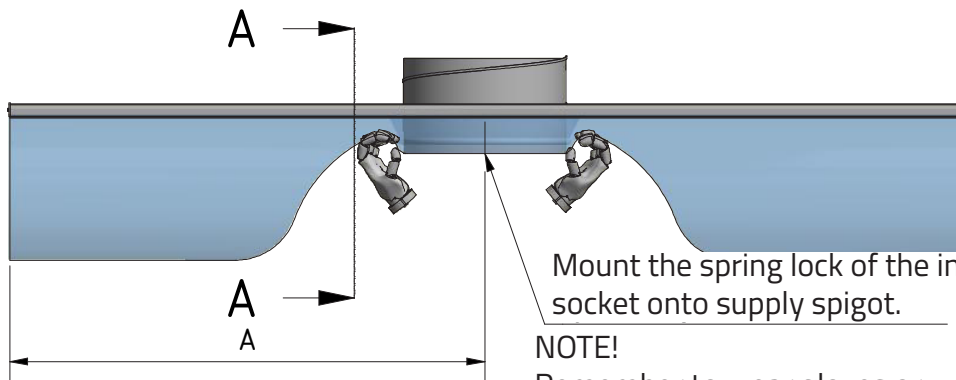
DS-0012-GB-02



Mark the  $A$  measurement on the rail so that it is clear where the nozzle is located after the duct has been mounted in the rails.



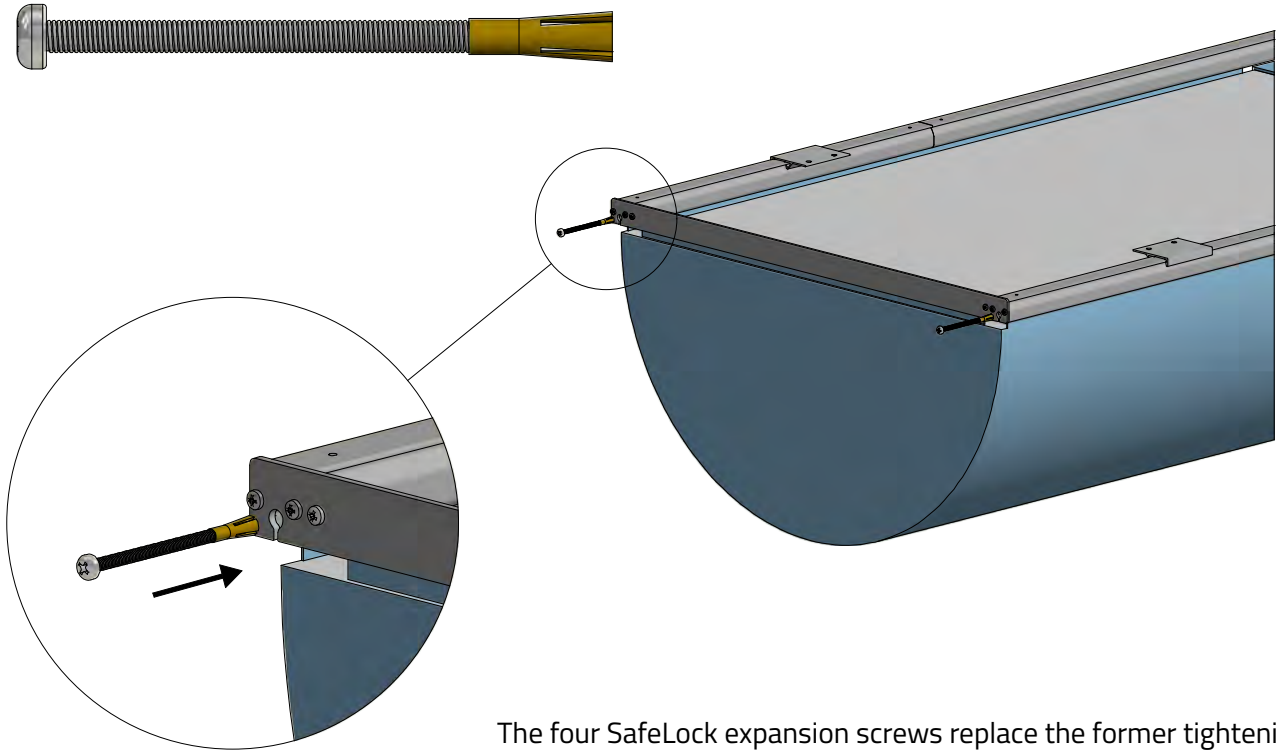
A-A



**NOTE!**  
Remember to wear gloves or wash your hands prior to installation.

## SafeLock for D-Safetrack

DS-0013-GB-01



The four SafeLock expansion screws replace the former tightening cords.

The SafeLock is inserted into the "keyhole" at the end of the Safetrack. Apply drill driver with bit PC2.

All four SafeLock expansion screws must be fully inserted before tightening the duct. Be careful not to over-tighten the screws.

