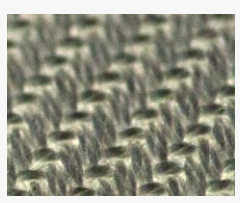


COLOURS AND MATERIALS

GREENWEAVE



KE no.	Designation	Permeability/ 120 Pa [m³/m²/h]	Material datasheet	Antistatic	Material datasheet
GW50	GreenWeave® Polyester fabric	50	1	-	-
GW150	GreenWeave® Polyester fabric	150	2	-	-
GW200	GreenWeave® Polyester fabric	200	3	GWA200	20
GW320	GreenWeave® Polyester fabric	320	4	GWA320	21
GW500	GreenWeave® Polyester fabric	500	5	GWA500	22
GW780	GreenWeave® Polyester fabric	780	6	-	-
GW1380	GreenWeave® Polyester fabric	1380	7	-	-

WOVEN COLOURS PANTONE/RAL

White 11-0601-TP / 9010	Black 19-5708-TP / 9005	Light Grey 12-4705-TP / 9002	Dark Blue 19-3864-TP / 5002

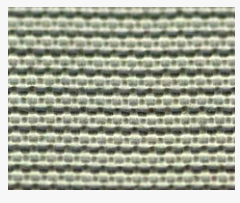
STOCK COLOURS PANTONE/RAL

Yellow 14-0955-TP / 1028	Red 18-1655-TP / 3031	Light Blue 16-4132-TP / N/A

ANTISTATIC PANTONE/RAL

White 11-0601-TP / 9010

MULTIWEAVE



KE no.	Designation	Permeability/ 120 Pa [m³/m²/h]	Material datasheet
MW40	Flame retardant special Polyester fabric - Cleanroom 4	40	41
MW40A	Flame retardant special Polyester fabric - Cleanroom 4 Antimicrobial treatment	40	42

WOVEN COLOURS PANTONE/RAL

White 11-0601-TP / 9010	Light Grey 12-4705-TP / 9002	Dark Blue 19-3864-TP / 5002

STOCK COLOURS PANTONE/RAL

Yellow 14-0955-TP / 1028	Red 18-1655-TP / 3031	Light Blue 16-4132-TP / N/A	Black 19-5708-TP / 9005	Green 18-6024-TP / 6016	Beige/Tan 15-1215-TP / 1019	Dark Grey 17-4402-TPG / 7042

KE no.	Designation	Permeability/ 120 Pa [m³/m²/h]	Material datasheet
MW20	Flame retardant special Polyester fabric - Cleanroom 4	20	40
MW80	Flame retardant special Polyester fabric - Cleanroom 4	80	43
MW320	Flame retardant special Polyester fabric - Cleanroom 4	320	44
MW600	Flame retardant special Polyester fabric - Cleanroom 4	600	45

WOVEN COLOURS PANTONE/RAL

White 11-0601-TP / 9010	Light Grey 12-4705-TP / 9002	Dark Blue 19-3864-TP / 5002



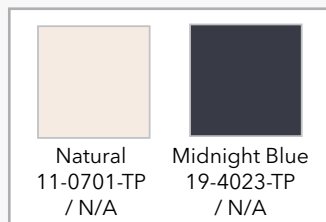
MATERIALS AND COLOURS

NOMEX

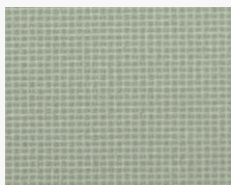


KE no.	Designation	Permeability/ 120 Pa [m ³ /m ² /h]	Material datasheet
NO130	Nomex fabric	130	33
NO290	Nomex fabric	290	16
NO370	Nomex fabric	370	17
NO460	Nomex fabric	460	18
NO700	Nomex fabric	700	19

WOVEN COLOURS
PANTONE/RAL

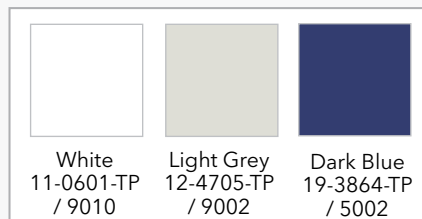


ZEROWEAVE



KE no.	Designation	Permeability/ 120 Pa [m ³ /m ² /h]	Material datasheet
ZW	Flame retardant Polyester fabric with PU- coating*)	0	27

COLOURS
PANTONE/RAL



*) Approved in
acc. with
EN 13501-1

01/2020

