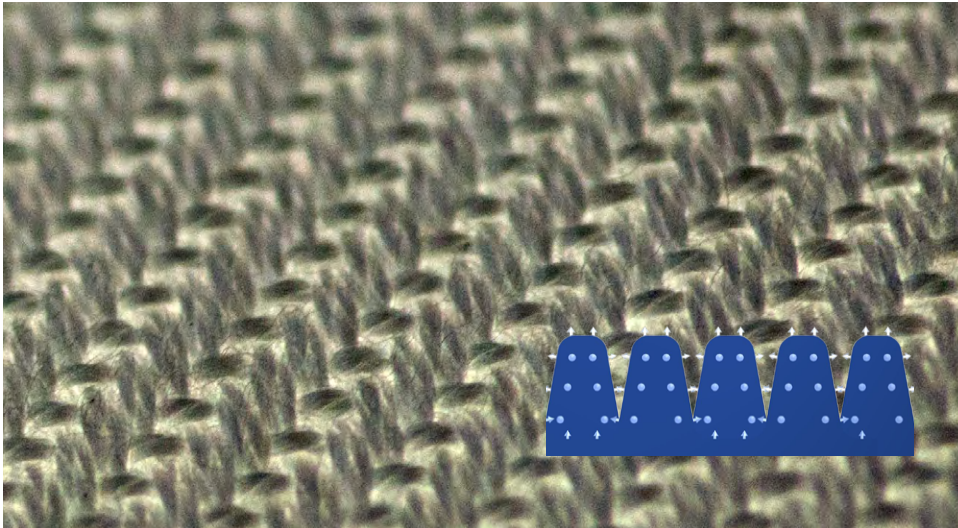




GreenWeave is a woven material made exclusively for fabric ducting. The unique and competitive features create a sustainable and energy efficient solution for textile based ventilation.

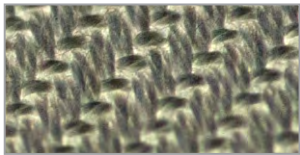


GreenWeave is especially suited for comfort installations with high demands on indoor air quality. Typical applications are offices, schools, laboratories, conference centres, and cold work rooms in food industry. KE Fibertec offers LCC calculations (Life Cycle Cost) to visualize the cost effectiveness of the total investment in GreenWeave. The Cradle to Cradle certified material is a well-documented and sustainable solution that can be re-cycled after use.

- Clean breathing air. GreenWeave filters the supply air as an M6 prefilter acc. to EN779:2012
- Longer washing intervals with staple fiber yarns that ensure largest possible fabric surface. GreenWeave has a dust holding capacity of 0.7 oz/sq yd fabric surface acc. to EN779:2012
- No chemical additives. GreenWeave is made of 100% recyclable material and is Cradle-to-Cradle certified
- Fire tested acc. to UL 2518, EN13501 B-S1-d0 without any finishing treatment
- Hygienic and washable material that does not condense
- Optional antistatic feature

HIGH DUST HOLDING CAPACITY

GreenWeave has the highest dust holding capacity on the market with 3-4 times longer washing intervals compared with competing brands.



7 DIFFERENT POROSITIES

The variety of porosities enables very accurate dimensioning for a low air pressure and energy optimization.



KE FIBERTEC WEAVING MILL

All materials are woven in-house which allows us to control the complete production cycle and meet the requirements to our ISO 9001 system.



CUSTOM COLORS

Available in a number of standard colors. At additional cost we can supply custom colors according to the Pantone/RAL systems.



CRADLE TO CRADLE CERTIFICATION

As standard the white, black, light gray and ultramarine blue materials are Cradle to Cradle certified.



OEKO-TEX® STANDARD

Approved by the international Oeko-Tex organisation to document the sustainability of the material.



FIRE RETARDANT

Complies with UL 2518, DS 428, B-s1, d0 and EN 13501-1 fire standards. The fire retardants cannot be washed out of the fabric.



NO ANTI-BAC

Silver ions can be harmful to people and the environment and therefore not an option.





KE no.	Designation	Porosity at 0.5" WG CFM/SQ FT	Material datasheet	GreenWeave Antistatic	Material datasheet
GW2	GreenWeave® Polyester fabric	2	1	-	-
GW8	GreenWeave® Polyester fabric	8	2	-	-
GW11	GreenWeave® Polyester fabric	11	3	GWA11	20
GW18	GreenWeave® Polyester fabric	18	4	GWA18	21
GW27	GreenWeave® Polyester fabric	27	5	GWA27	22
GW43	GreenWeave® Polyester fabric	43	6	-	-
GW76	GreenWeave® Polyester fabric	76	7	-	-

WOVEN COLORS
PANTONE/RAL

White 11-0601-TP / 9010	Black 19-5708-TP / 9005	Light Gray 12-4705-TP / 9002	Ultramarine Blue 19-3864-TP / 5002

STOCK COLORS
PANTONE/RAL

Melon Yellow 14-1064-TP / 1028	Red 18-1655-TP / 3031	Light Blue 16-4132-TP / N/A

ANTISTATIC
PANTONE/RAL

White 11-0601-TP / 9010

