

## GREENWEAVE



KE no.	Designation	Porosity at 0.5" WG CFM/SQ FT	Material datasheet	Antistatic	Material datasheet
GW2	GreenWeave® Polyester fabric	2	1	-	-
GW8	GreenWeave® Polyester fabric	8	2	-	-
GW11	GreenWeave® Polyester fabric	11	3	GWA11	20
GW18	GreenWeave® Polyester fabric	18	4	GWA18	21
GW27	GreenWeave® Polyester fabric	27	5	GWA27	22
GW43	GreenWeave® Polyester fabric	43	6	-	-
GW76	GreenWeave® Polyester fabric	76	7	-	-

### WOVEN COLORS PANTONE/RAL

White 11-0601-TP / 9010	Black 19-5708-TP / 9005	Light Gray 12-4705-TP / 9002	Ultramarine Blue 19-3864-TP / 5002

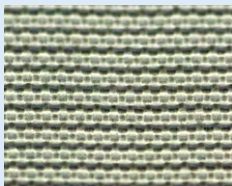
### STOCK COLORS PANTONE/RAL

Melon Yellow 14-1064-TP / 1028	Red 18-1655-TPG / 3031	Light Blue 16-4132-TP / N/A

### ANTISTATIC PANTONE/RAL

White 11-0601-TP / 9010

## MULTIWEAVE



KE no.	Designation	Porosity at 0.5" WG CFM/SQ FT	Material datasheet
MW2	Flame retardant special Polyester fabric - Cleanroom 4	2	41
MW2A	Flame retardant special Polyester fabric - Cleanroom 4 Antimicrobial treatment	2	42

### WOVEN COLORS PANTONE/RAL

White 11-0601-TP / 9010	Light Gray 12-4705-TP / 9002	Ultramarine Blue 19-3864-TP / 5002

### STOCK COLORS PANTONE/RAL

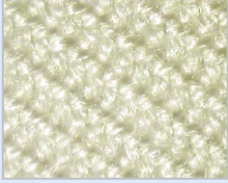
Melon Yellow 14-1064-TP / 1028	Red 18-1655-TPG / 3031	Light Blue 16-4132-TP / N/A	Black 19-5708-TP / 9005	Green 18-5633-TP / 6016	Tan 15-1215-TP / 1019

KE no.	Designation	Porosity at 0.5" WG CFM/SQ FT	Material datasheet
MW1	Flame retardant special Polyester fabric - Cleanroom 4	1	40
MW4	Flame retardant special Polyester fabric - Cleanroom 4	4	43
MW18	Flame retardant special Polyester fabric - Cleanroom 4	18	44
MW33	Flame retardant special Polyester fabric - Cleanroom 4	33	45

### WOVEN COLORS PANTONE/RAL

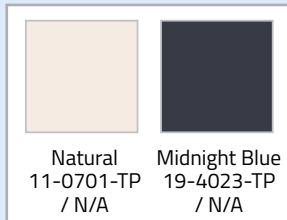
White 11-0601-TP / 9010	Light Gray 12-4705-TP / 9002	Ultramarine Blue 19-3864-TP / 5002

## NOMEX



KE no.	Designation	Porosity at 0.5" WG CFM/SQ FT	Material datasheet
N08	Nomex fabric	8	33
N016	Nomex fabric	16	16
N020	Nomex fabric	20	17
N025	Nomex fabric	25	18
N038	Nomex fabric	38	19

## WOVEN COLORS PANTONE/RAL



01/2017

