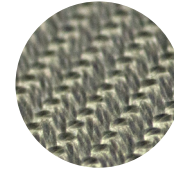


MATERIALS AND COLORS.

AIR THE WAY YOU WANT

GreenWeave.

Low-energy and sustainable fabric duct material.



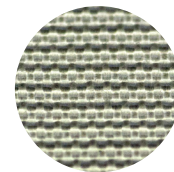
CRADLE TO CRADLE MATERIALS / PANTONE COLORS

WHITE 11-0601-TP	BLACK 19-5708-TP	LIGHT GRAY 12-4705-TP	DARK GRAY 17-4402-TPG	DARK BLUE 19-3864-TP	YELLOW 14-0955-TP	RED 18-1655-TP	WHITE 11-0601-TP ANTISTATIC

KE NO.	DESIGNATION	POROSITY AT 0.5" WG CFM/SQ FT	MATERIAL DATASHEET	GREENWEAVE ANTISTATIC	MATERIAL DATASHEET
GW2	GreenWeave® Polyester fabric	2	1	-	-
GW8	GreenWeave® Polyester fabric	8	2	-	-
GW11	GreenWeave® Polyester fabric	11	3	GWA11	20
GW18	GreenWeave® Polyester fabric	18	4	GWA18	21
GW27	GreenWeave® Polyester fabric	27	5	GWA27	22
GW43	GreenWeave® Polyester fabric	43	6	-	-
GW76	GreenWeave® Polyester fabric	76	7	-	-

MultiWeave.

Durable and versatile fabric duct material.



AVAILABLE PANTONE COLORS

WHITE 11-0601-TP	LIGHT GRAY 12-4705-TP	DARK BLUE 19-3864-TP	YELLOW 14-0955-TP	RED 18-1655-TP	DARK GRAY 17-4402-TPG	BLACK 19-5708-TP	GREEN 18-6024-TP	TAN 15-1215-TP	LIGHT BLUE 16-4132-TP

KE NO.	DESIGNATION	POROSITY AT 0.5" WG CFM/SQ FT	MATERIAL DATASHEET
MW2	Flame retardant special Polyester fabric Class 4 Cleanroom	2	41
MW2A	Flame retardant special Polyester fabric Class 4 Cleanroom - Antibacterial treatment	2	42

AVAILABLE PANTONE COLORS

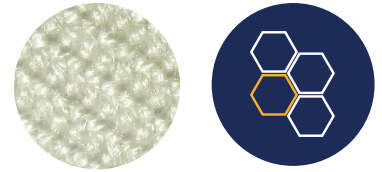
WHITE 11-0601-TP	LIGHT GRAY 12-4705-TP	DARK BLUE 19-3864-TP

KE NO.	DESIGNATION	POROSITY AT 0.5" WG CFM/SQ FT	MATERIAL DATASHEET
MW1	Flame retardant special Polyester fabric - Class 4 Cleanroom	1	40
MW4	Flame retardant special Polyester fabric - Class 4 Cleanroom	4	43
MW18	Flame retardant special Polyester fabric - Class 4 Cleanroom	18	44
MW33	Flame retardant special Polyester fabric - Class 4 Cleanroom	33	45

MATERIALS AND COLORS.

Nomex.

High-temperature resistant aromatic polyamide fibers.



WOVEN PANTONE COLORS



NATURAL
11-0701-TP

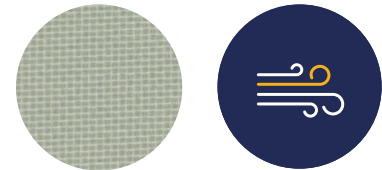


MIDNIGHT BLUE
19-4023-TP

KE NO.	DESIGNATION	POROSITY AT 0.5" WG CFM/SQ FT	MATERIAL DATASHEET
NO130	Nomex fabric	130	33
NO290	Nomex fabric	290	16
NO370	Nomex fabric	370	17
NO460	Nomex fabric	460	18
NO700	Nomex fabric	700	19

ZeroWeave.

Airtight fabric duct material.



AVAILABLE PANTONE COLORS



WHITE
11-0601-TP



LIGHT GRAY
14-4201-TP



DARK BLUE
19-3864-TP

KE NO.	DESIGNATION	POROSITY AT 0.5" WG CFM/SQ FT	MATERIAL DATASHEET
ZW	Flame retardant Polyester fabric with PU-coating*	0	27

*) Approved in acc. with EN 13501-1, B-s1,d0

