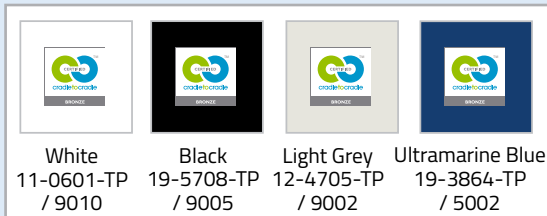


GREENWEAVE



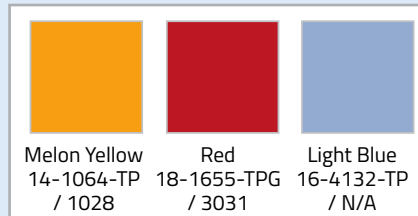
KE no.	Designation	Permeability/120 Pa m ³ /m ² /h	Material datasheet	Antistatic	Material datasheet
GW50	GreenWeave® Polyester fabric	50	1	-	-
GW150	GreenWeave® Polyester fabric	150	2	-	-
GW200	GreenWeave® Polyester fabric	200	3	GWA200	20
GW320	GreenWeave® Polyester fabric	320	4	GWA320	21
GW500	GreenWeave® Polyester fabric	500	5	GWA500	22
GW780	GreenWeave® Polyester fabric	780	6	-	-
GW1380	GreenWeave® Polyester fabric	1380	7	-	-

WOVEN COLOURS PANTONE/RAL



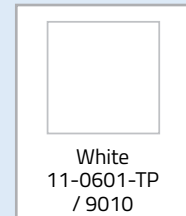
White 11-0601-TP / 9010
 Black 19-5708-TP / 9005
 Light Grey 12-4705-TP / 9002
 Ultramarine Blue 19-3864-TP / 5002

STOCK COLOURS PANTONE/RAL



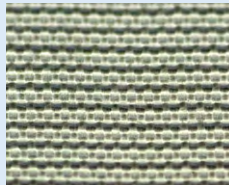
Melon Yellow 14-1064-TP / 1028
 Red 18-1655-TPG / 3031
 Light Blue 16-4132-TP / N/A

ANTISTATIC PANTONE/RAL



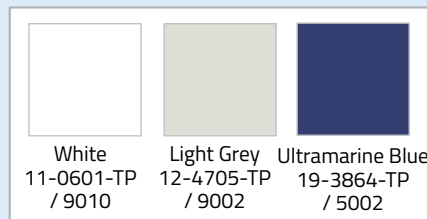
White 11-0601-TP / 9010

MULTIWEAVE



KE no.	Designation	Permeability/120 Pa m ³ /m ² /h	Material datasheet
MW40	Flame retardant special Polyester fabric - Cleanroom 4	40	41
MW40A	Flame retardant special Polyester fabric - Cleanroom 4 Antimicrobial treatment	40	42

WOVEN COLOURS PANTONE/RAL



White 11-0601-TP / 9010
 Light Grey 12-4705-TP / 9002
 Ultramarine Blue 19-3864-TP / 5002

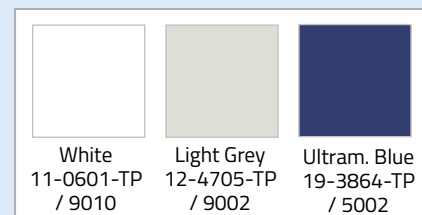
STOCK COLOURS PANTONE/RAL



Melon Yellow 14-1064-TP / 1028
 Red 18-1655-TPG / 3031
 Light Blue 16-4132-TP / N/A
 Black 19-5708-TP / 9005
 Green 18-5633-TP / 6016
 Beige/Tan 15-1215-TP / 1019

KE no.	Designation	Permeability/120 Pa m ³ /m ² /h	Material datasheet
MW20	Flame retardant special Polyester fabric - Cleanroom 4	20	40
MW80	Flame retardant special Polyester fabric - Cleanroom 4	80	43
MW320	Flame retardant special Polyester fabric - Cleanroom 4	320	44
MW600	Flame retardant special Polyester fabric - Cleanroom 4	600	45

WOVEN COLOURS PANTONE/RAL



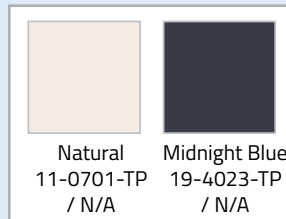
White 11-0601-TP / 9010
 Light Grey 12-4705-TP / 9002
 Ultram. Blue 19-3864-TP / 5002

NOMEX



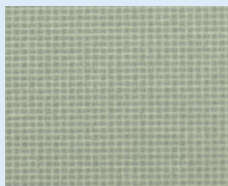
KE no.	Designation	Permeability/120 Pa m ³ /m ² /h	Material datasheet
NO130	Nomex fabric	130	33
NO290	Nomex fabric	290	16
NO370	Nomex fabric	370	17
NO460	Nomex fabric	460	18
NO700	Nomex fabric	700	19

WOVEN COLOURS PANTONE/RAL



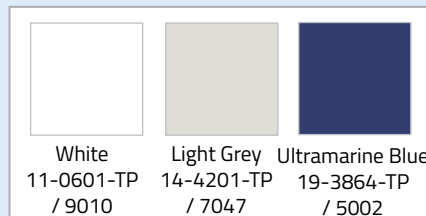
Natural 11-0701-TP / N/A
Midnight Blue 19-4023-TP / N/A

ZEROWEAVE



KE no.	Designation	Permeability/120 Pa m ³ /m ² /h	Material datasheet
ZW	Flame retardant Polyester fabric with PU- coating*)	0	27

STOCK COLOURS PANTONE/RAL



White 11-0601-TP / 9010
Light Grey 14-4201-TP / 7047
Ultramarine Blue 19-3864-TP / 5002

*) Approved in acc. with EN 13501-1 and DS 428:2011, B-s1,d0

01/2017

