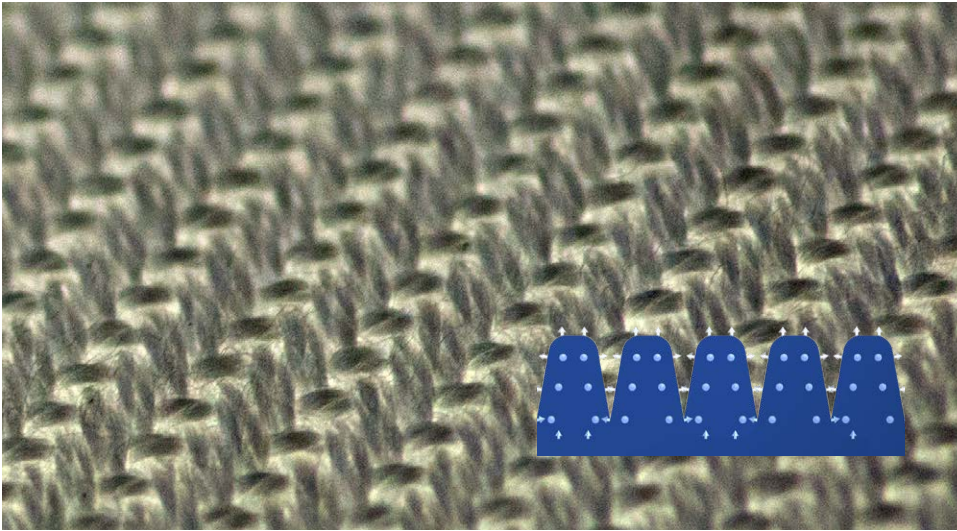




**GreenWeave is a woven material made exclusively for fabric ducting. The unique and competitive features create a sustainable and energy efficient solution for fabric duct ventilation.**

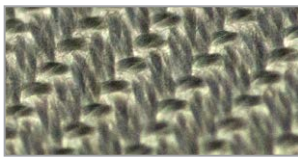


GreenWeave is especially suited for comfort installations with high demands on indoor air quality. Typical applications are offices, schools, laboratories, conference centres, and cold work rooms in food industry. KE Fibertec offers LCC calculations (Life Cycle Cost) to visualize the cost effectiveness of the total investment in GreenWeave. The Cradle to Cradle certified material is a well-documented and sustainable solution that can be re-cycled after use.

- Clean breathing air. GreenWeave filters the supply air as an M6 prefilter acc. to EN779:2012
- Longer washing intervals with staple fiber yarns that ensure largest possible fabric surface. GreenWeave has a dust holding capacity of 0.7 oz/sq yd fabric surface acc. to EN779:2012
- No chemical additives. GreenWeave is made of 100% recyclable material and is Cradle-to-Cradle certified
- Fire tested acc. to UL 2518, EN13501 B-S1-d0 without any finishing treatment
- Hygienic and washable material that does not condense
- Optional antistatic feature

### HIGH DUST HOLDING CAPACITY

GreenWeave has the highest dust holding capacity on the market with 3-4 times longer washing intervals compared with competing brands.



### 7 DIFFERENT POROSITIES

The variety of porosities enables very accurate dimensioning for a low air pressure and energy optimization.



### KE FIBERTEC WEAVING MILL

All materials are woven in-house which allows us to control the complete production cycle and meet the requirements to our ISO 9001 system.



### CUSTOM COLORS

Available in a number of standard colors. At additional cost we can supply custom colors according to the Pantone/RAL systems.



### CRADLE TO CRADLE CERTIFICATION

As standard the white, black, light gray and dark blue materials are Cradle to Cradle certified.



### OEKO-TEX® STANDARD

Approved by the international Oeko-Tex organisation to document the sustainability of the material.



### FIRE RETARDANT

Complies with UL 2518, DS 428, B-s1, d0 and EN 13501-1 fire standards. The fire retardants cannot be washed out of the fabric.



### NO ANTI-BAC

Silver ions can be harmful to people and the environment and therefore not an option.



# GreenWeave®

Low energy and sustainable fabric duct material



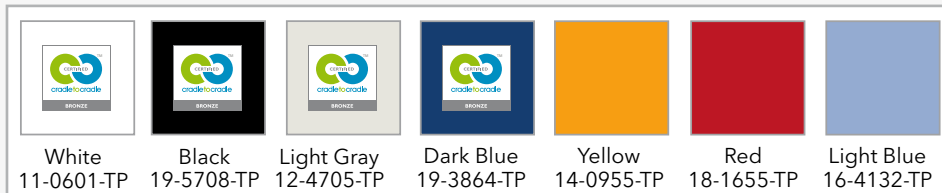
**KE FIBERTEC**

**AIR THE WAY YOU WANT**

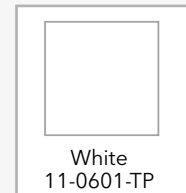


KE no.	Designation	Porosity at 0.5" WG CFM/SQ FT	Material datasheet	GreenWeave Antistatic	Material datasheet
<b>GW2</b>	GreenWeave® Polyester fabric	2	1	-	-
<b>GW8</b>	GreenWeave® Polyester fabric	8	2	-	-
<b>GW11</b>	GreenWeave® Polyester fabric	11	3	GWA11	20
<b>GW18</b>	GreenWeave® Polyester fabric	18	4	GWA18	21
<b>GW27</b>	GreenWeave® Polyester fabric	27	5	GWA27	22
<b>GW43</b>	GreenWeave® Polyester fabric	43	6	-	-
<b>GW76</b>	GreenWeave® Polyester fabric	76	7	-	-

### AVAILABLE COLORS PANTONE



### ANTISTATIC PANTONE



KE Fibertec NA Inc  
2107 Emmorton Park Road Ste 102  
Edgewood MD 21040

Ph: 443 299 6435  
info@kefibertec.com  
www.kefibertec.com

