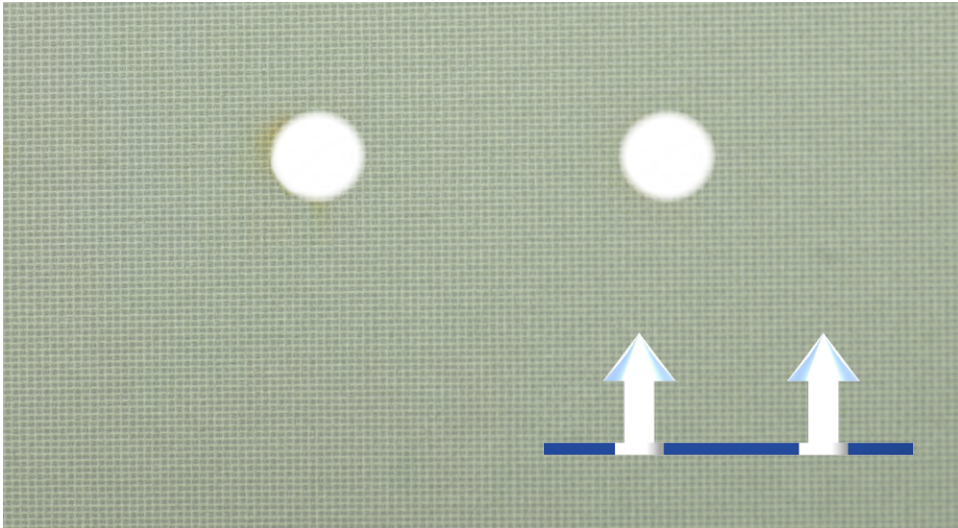


ZeroWeave is the right solution for applications where you need to move large volumes of air over a long distance and still maintain optimum air mixing. ZeroWeave can be combined with all KE Fibertecs type of hole patterns and nozzle configurations.



- ZeroWeave is an airtight material so the filter efficiency is zero. All the air is distributed through holes or nozzles
- No PVC, halogens or other harmful substances. The material can be lasercut to improve the finished quality
- Fire tested acc. to EN13501 B-S1-d0 without any finishing treatment
- No condensation issues when used in environments below 90% RH
- Washing not needed in order to maintain functionality. Only for hygienic and aesthetic reasons.

ZeroWeave is an airtight, low-maintenance material with a wide range of application possibilities such as supermarkets, large sports arenas, swimming pools, high-bay industrial facilities, and rooms with high dust generation or limited accessibility.

AIRTIGHT MATERIAL

100% mixing ventilation. Possible to combine with all hole patterns and nozzles.



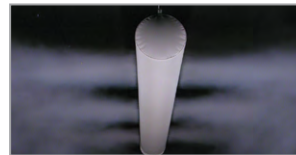
LOW MAINTENANCE

As the material is non-permeable and airtight you will not need to wash it in order to maintain functionality.



GOOD AIR MIXING

Well suited for heating purposes because of the good air mixing.



LARGE AIR VOLUMES

Well suited for applications like industry, arenas and supermarkets where you need to move large volumes of air.



TALL BUILDINGS

Efficient air distribution in high ceiling rooms.



DIRECTIONAL AIR DISTRIBUTION

Different type of nozzle configuration provide a directional distribution of the air nozzles.



FIRE RETARDANT

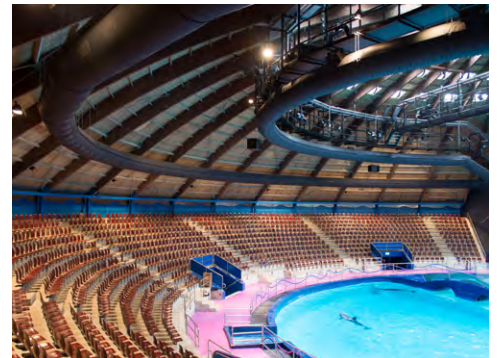
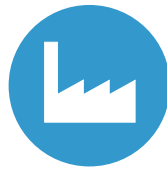
Complies with DS 428, B-s1, d0 and EN 13501-1 fire standards.



LASERCUT MATERIAL




No PVC, halogens or other harmful substances.





KE no.	Designation	Permeability at 120 Pa m ³ /m ² /h	Material datasheet
ZW	Non-flammable Polyester fabric with flame retardant PU coating*)	0	27

COLOURS
PANTONE/RAL

		
White 11-0601-TP / 9010	Light Grey 14-4201-TP / 7047	Ultramarine Blue 19-3864-TP / 5002

*) Approved in acc. with
EN 13501-1 and
DS 428:2011, B-s1, d0

