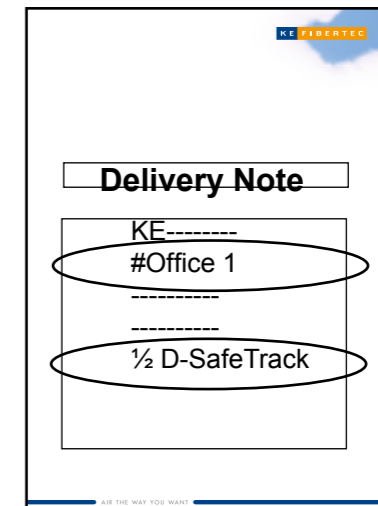


1/2 D-SafeTrack General rules

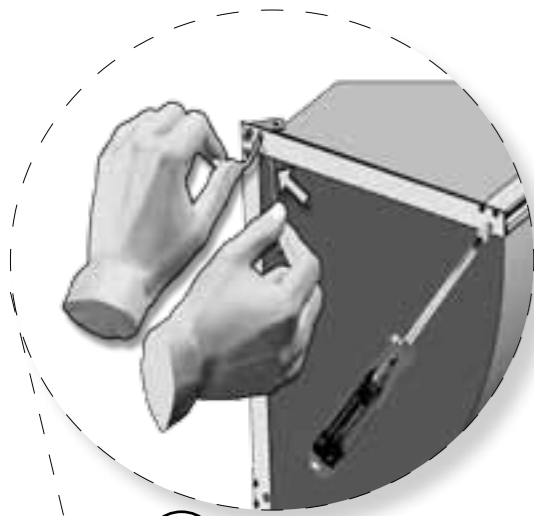


Please find information on delivery and installation in the box labelled INFO.



Room reference

Suspension type

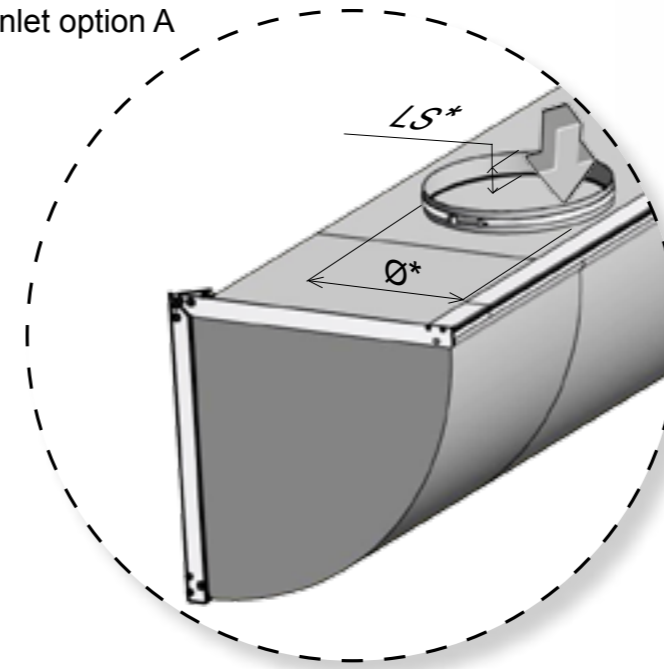


6 SafeLock expansion screws (4).

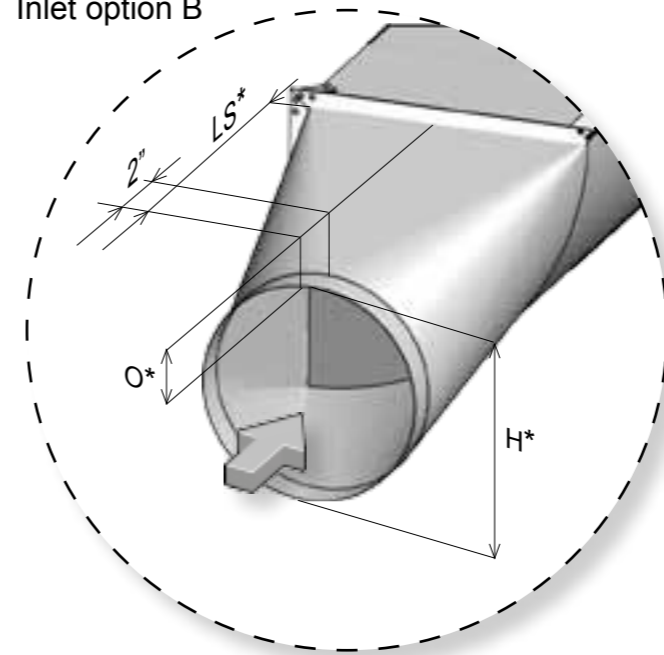
The SafeLock screw is inserted into the "keyhole" at the end of the SafeTrack and is tightened with a screwdriver (max. 5 rotations). It is important to fully insert the screw before tightening.



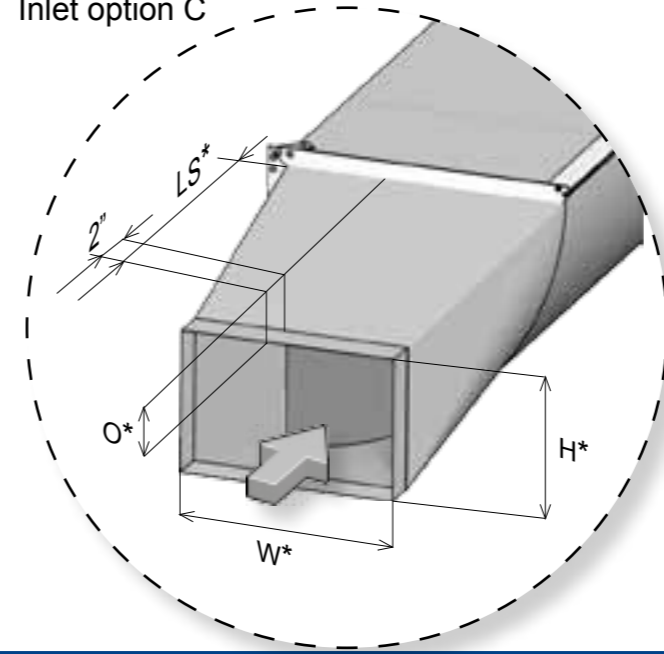
Inlet option A



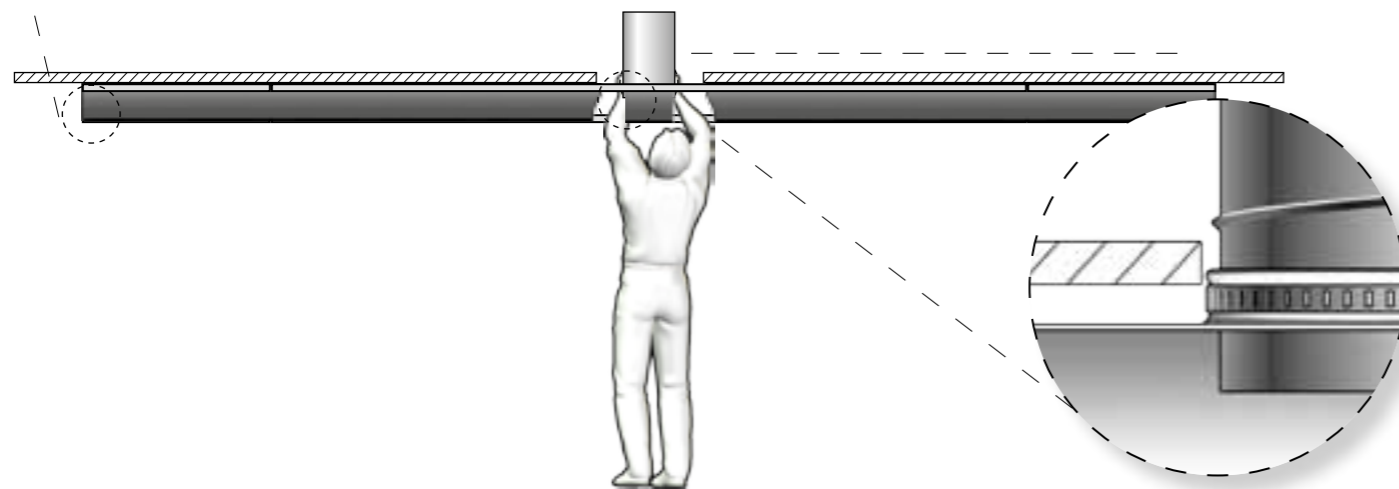
Inlet option B



Inlet option C

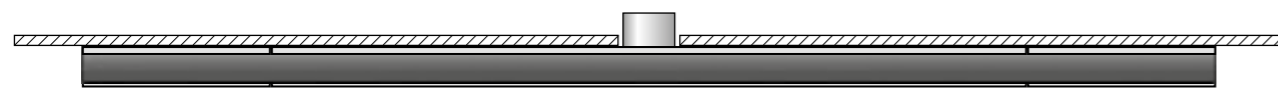


5 Tighten cords at both ends of the duct.



7 Unzip socket/zip below air inlet. Mount air inlet socket onto supply spigot with clamp and tighten clamp. Zip up socket/zip...

LS = Length of socket
O = Offset
W = Width
Ø = Inlet diameter
H = Height



8 ...and the KE-Interior duct system is ready.

When taking down the duct for cleaning etc. the steps 4 to 7 should be followed in reverse order.

*See further sizing details on enclosed project drawings, if any, and also see delivery note (packing list) and read off position description.



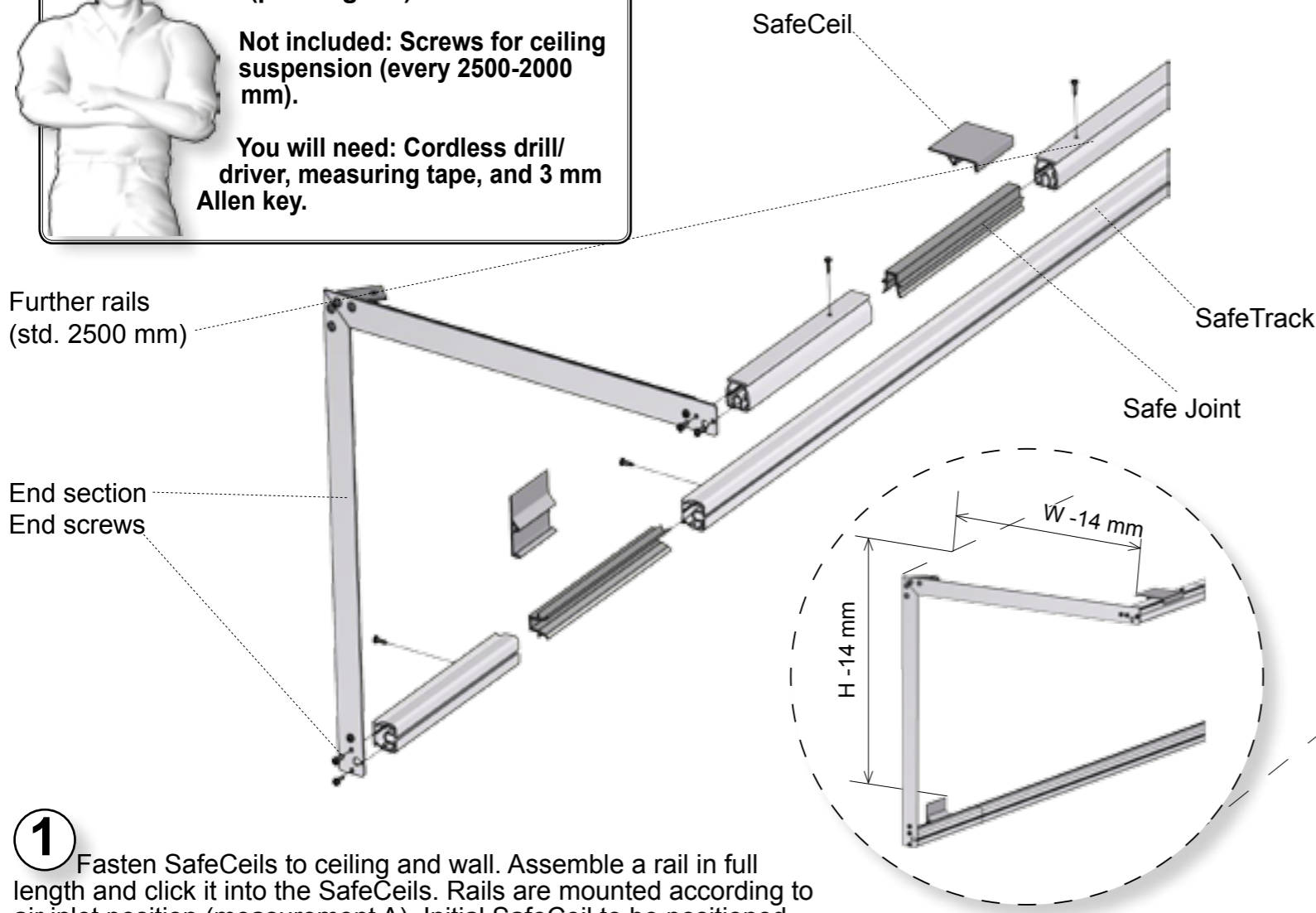
Alu-rails labelled with a saw symbol do not require further trimming.

0980024-GB

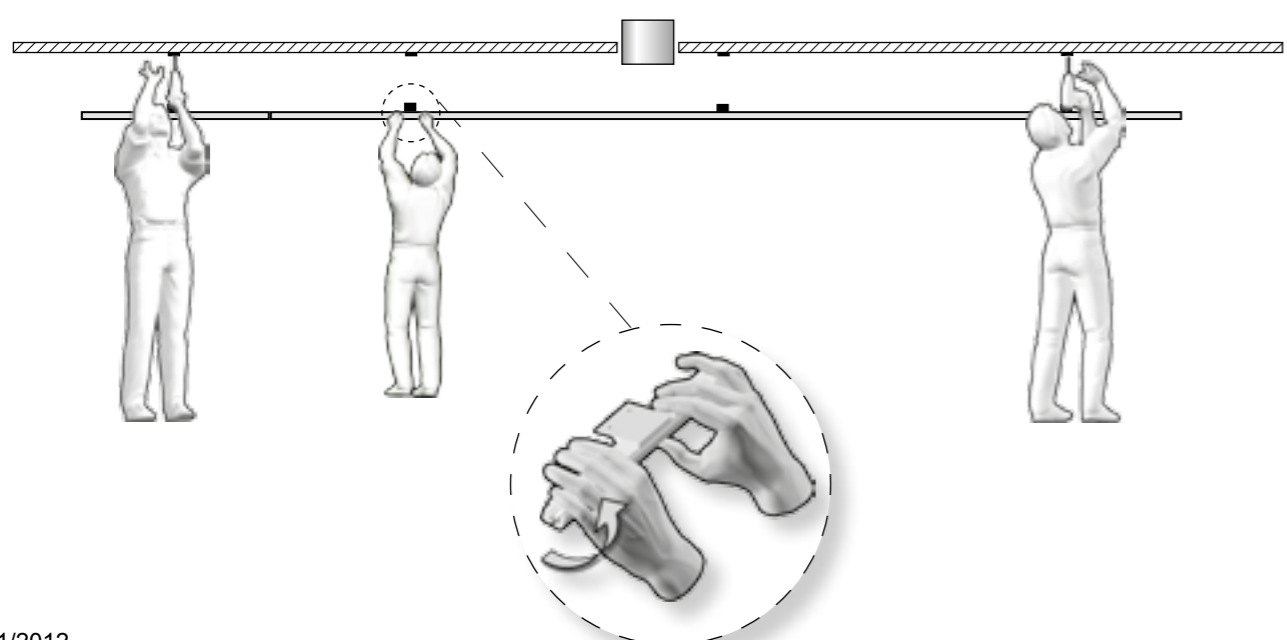
Begin by comparing the contents of the box against the delivery note (packing list).

Not included: Screws for ceiling suspension (every 2500-2000 mm).

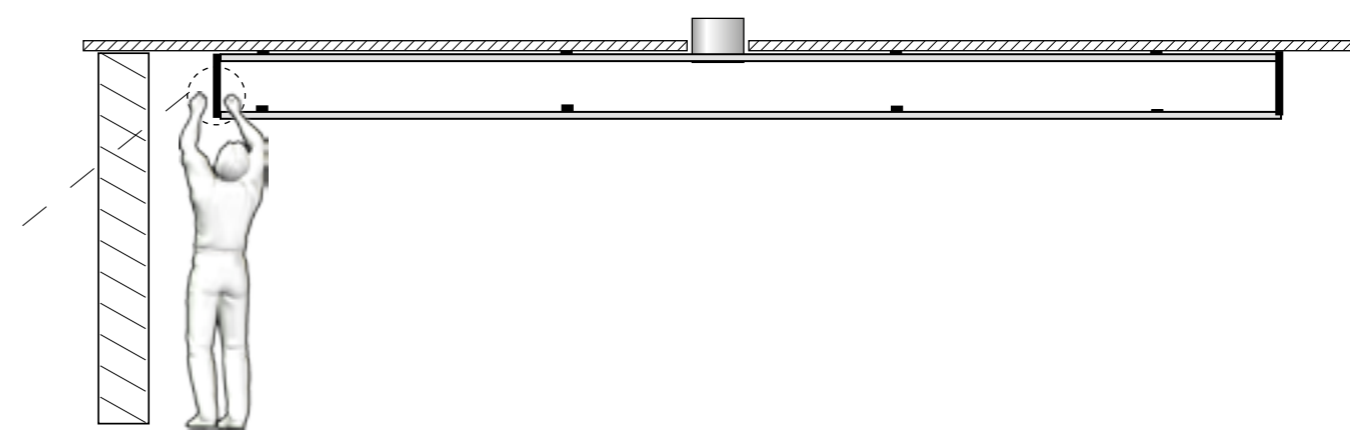
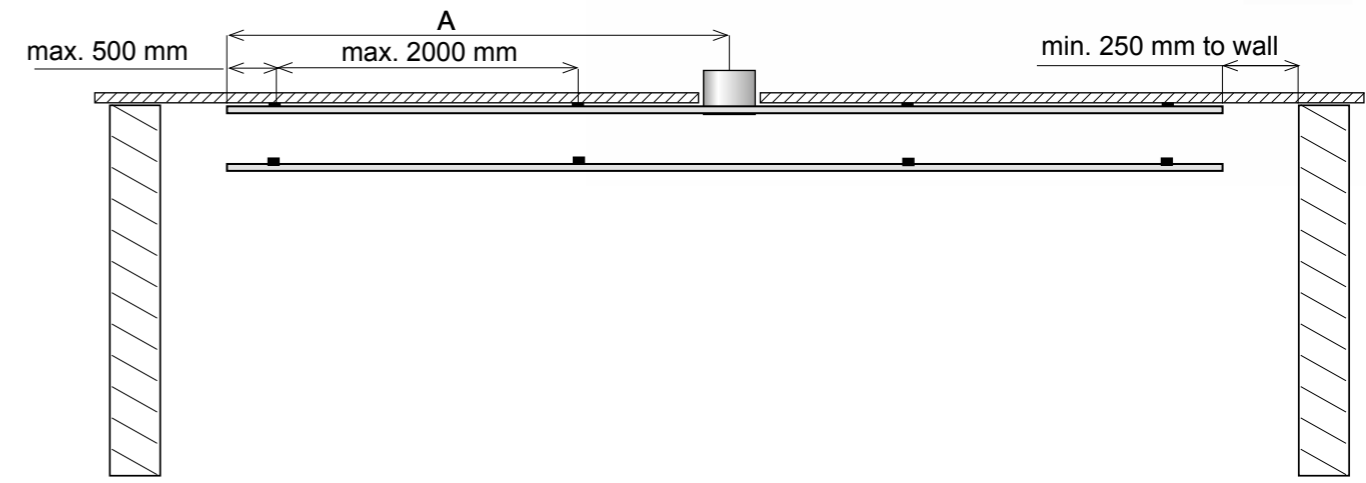
You will need: Cordless drill/driver, measuring tape, and 3 mm Allen key.



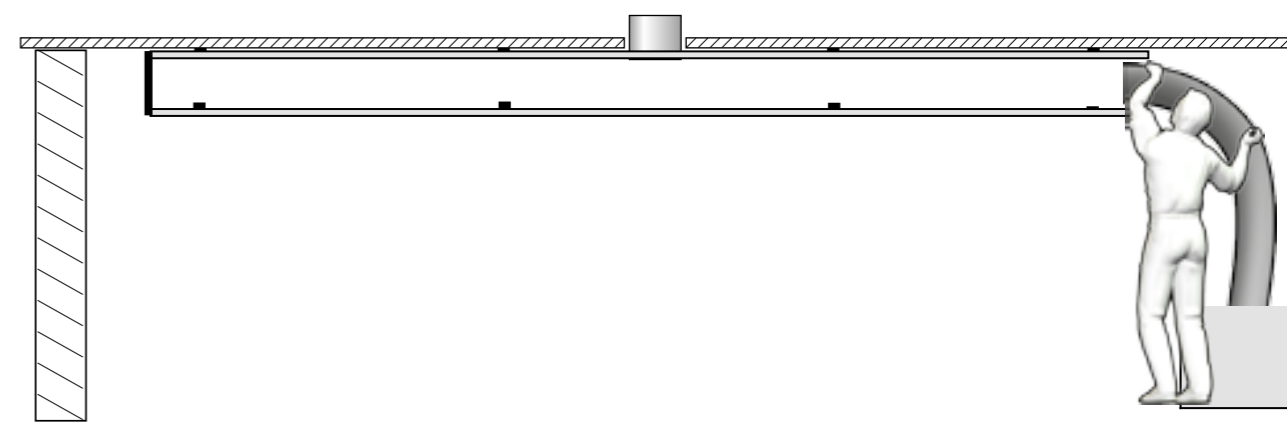
1 Fasten SafeCeils to ceiling and wall. Assemble a rail in full length and click it into the SafeCeils. Rails are mounted according to air inlet position (measurement A). Initial SafeCeil to be positioned max. 500 mm from end of rail. For positioning of SafeCeil in longitudinal direction, see **2**.



2 Positioning of SafeCeils in longitudinal direction.



3 Fasten end sections to wall and ceiling.



4 Feed both textile bulbs into the SafeTrack. Take care that the textile bulbs are fed equally at the same time into the SafeTrack.