

Efficient and directional air distribution in supermarket



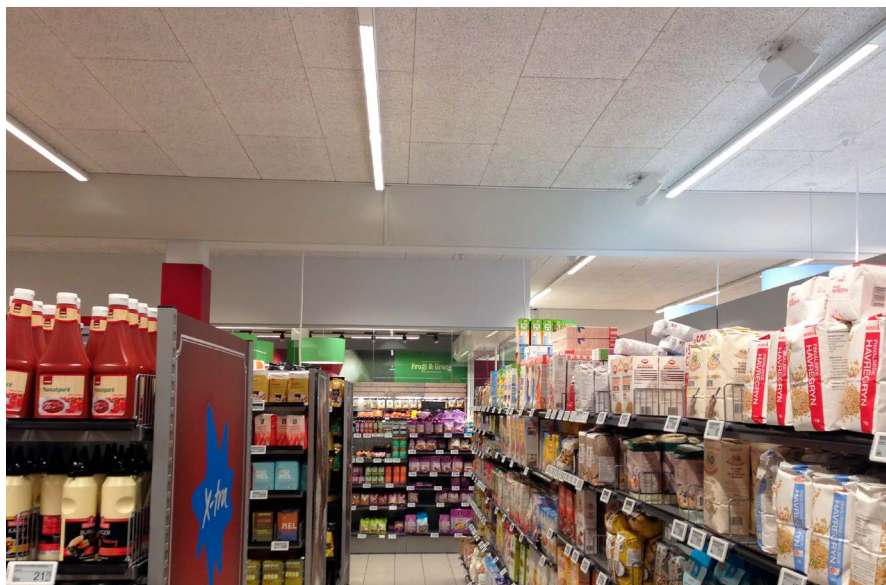
Healthy indoor environment for customers and staff

KE Fibertec supplies efficient cooling and ventilation solutions for shops and supermarkets. For food sections we are able to offer directional air distribution at low temperatures that ensure that fruit and vegetables keep fresh for a longer time. For shops and non-food sections KE Fibertec's textile ducts ensure a draught-free and pleasant indoor air quality for customers and staff.



I am very pleased and satisfied with our ventilation ducts. When our consulting engineer suggested this solution, I was a little worried that the ducts would flutter and soon look dirty. But they look nice, don't get dirty, and perform very well.

Bent Kruse Madsen, store manager - SuperBrugsen Nordby



Multi-string ventilation solution

Superbrugsen was introduced to several solutions that would meet the various ventilation demands of the room.

Fruit and vegetable area

In this section a KE-Inject Hybrid solution was installed featuring D-shaped ducts that are especially suited for rooms with low ceiling height.

Café and delicatessen area

A KE-Interior solution was installed in this area. The air is distributed at a temperature lower than the room air temperature (passive thermal displacement).



TECHNICAL DATA:

System:	KE-Low Impulse / KE-Inject® Hybrid
Colour:	Light Grey (RAL 9002)
Material:	GreenWeave
Suspension:	D-Lite Alu

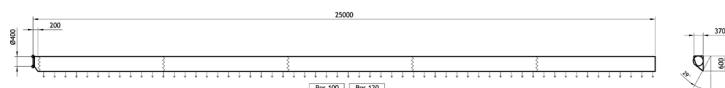
Installation contractor:	GK Ventilation, Varde
Consulting engineer:	Ingeniør'ne, Esbjerg
Materials:	KE Fibertec AS





Supermarkets are particularly challenging as we are dealing with different functions and large temperature variations in one and the same room. With textile ducts we are able to tailor a solution for each individual room and by that create a healthy indoor air quality for both staff and customers.

René Frimodt, KE Fibertec AS



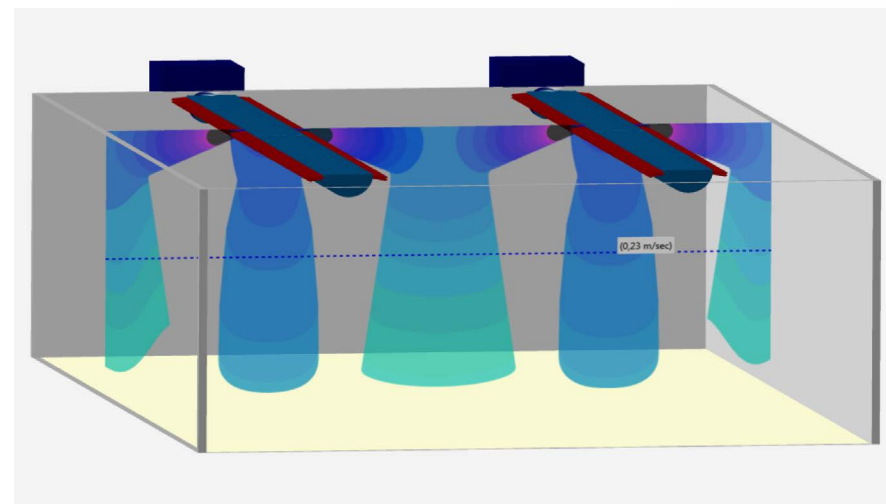
Textile materials with high dust holding capacity

Textile ducts are made of GreenWeave material with high dust holding capacity. Further, much of the air is being delivered through the Inject holes with the result that the ducts will not need to be washed for many years.

GreenWeave is a woven material made exclusively for fabric ducting. The unique and competitive features create a sustainable and energy efficient solution for textile based ventilation.

At the same time the material filters the supply air as an M6 prefilter acc. to EN779:2012 and provides clean breathing air in the room.

Read more at ke-fibertec.com/materials



Airflow in fruit and vegetable area

GreenWeave

- Clean breathing air. GreenWeave filters the supply air as an M6 prefilter acc. to EN779:2012
- Longer washing intervals with staple fibre yarns that ensure largest possible textile surface. GreenWeave has a dust holding capacity of 25 g/m² textile surface acc. to EN779:2012
- No chemical additives. GreenWeave is made of 100% recycable material and is Cradle-to-Cradle certified
- Fire tested acc. to EN13501 B-S1-d0 without any finishing treatment
- Hygienic and washable material that does not condense
- Max. shrinkage 0.5%
- Optional antistatic feature



KE Fibertec AS is market leader in Textile Based Ventilation. We create good indoor climate through our tailored textile ducts for installation in sports arenas, offices, laboratories, schools etc.

Textile ducts are customizable, easy to install, washable, hygienic, and come in all shapes and colours.

For more information please visit our website: www.ke-fibertec.com



For more information please contact:

KE Fibertec AS
Tel. +45 75 36 42 00
info@ke-fibertec.dk
www.ke-fibertec.com