

Efficient ventilation is good for the indoor climate



FBS ceiling panels in administration building

Customized air distribution

Larsens Eftf. ApS is a forge and machine company in Kolding, DK, that in the spring of 2018 moved to a new domicile.

Their current plant had become too small and the management wanted to improve the environment of the company and its employees - especially in relation to the indoor climate.

For that reason FBS ceiling panels were installed in offices, the canteen, and changing rooms, and textile ducts were installed in the production halls to ensure efficient and draft-free air distribution.



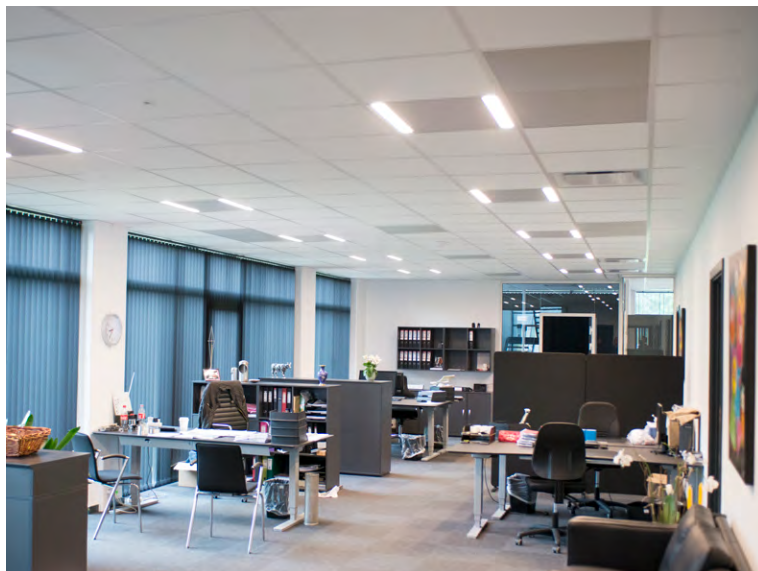
Textile ducts in production hall

Facts

Installation contractor: ETRECO A/S
Textile ducts: KE Fibertec AS

TECHNICAL DATA (PRODUCTION):

Construction year:	2018
System:	KE-DireJet
Colour:	Light grey
Material:	MultiWeave
Suspension:	Dual Safe Arch



Ceiling diffusor for efficient and draft-free air distribution

In the administration building a total of 36 FBS ceiling panels in size 600x600mm have been installed.

The ceiling panel is fully integrated with the suspended ceiling, and featuring a low pressure loss the system will meet the latest building regulations.

In the office each work station with two employees facing each other has been assigned a panel of 40-50 m³/h/person (personal ventilation) – the Combi version.

The rest of the air is distributed through panels in the walkway area (background ventilation).



In the production area where welding machines and other machinery generate heat it was a challenge to direct fresh air into the occupied zone. Textile ducts are very good at this job. The directional air distribution with nozzles will prevent draft problems and create a good air change and a pleasant room temperature for the staff. In administration and office facilities we have installed FBS ceiling panels that blend well into the other panels, at the same time providing draft-free and energy-efficient ventilation.

Morten Mads Lynggaard, ETRECO A/S



TECHNICAL DATA (ADMINISTRATION):

System:	FBS panel
Colour:	Light grey
Material:	GreenWeave





Flexible solution

The flexible and flat ceiling panels are ideal for low-ceilinged rooms as is the case with the changing room.

7 type 2 panels with DFC holes that enable directional airflow were installed here.

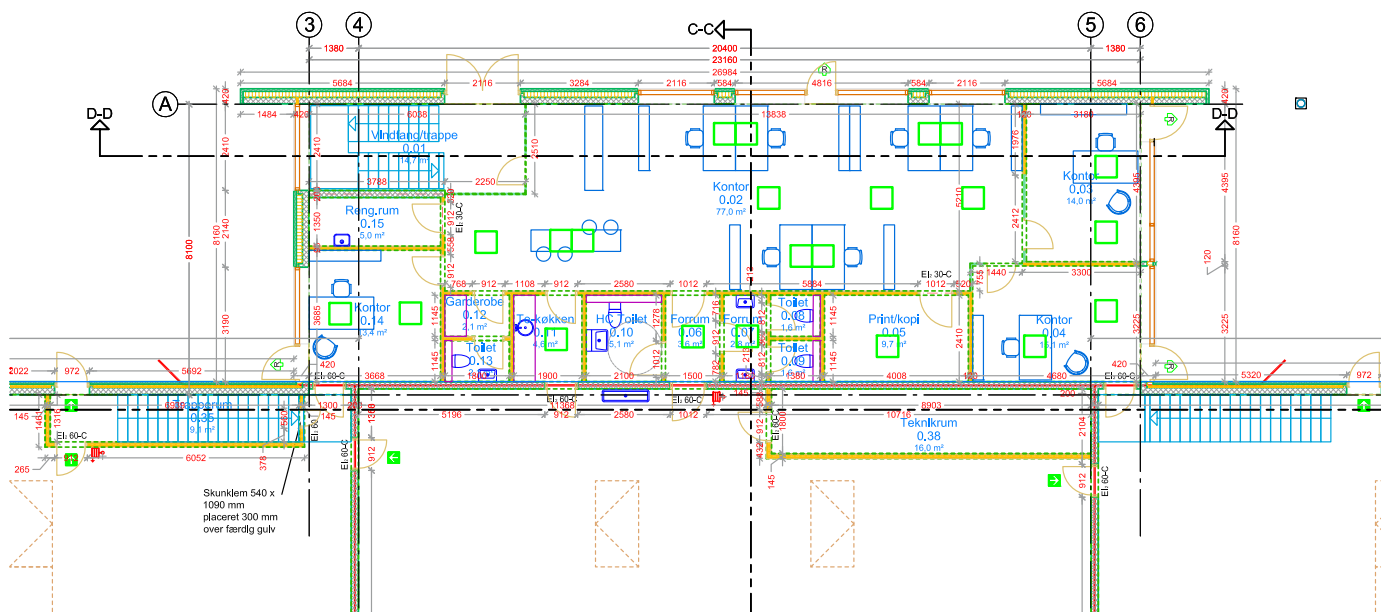
The DFC holes will direct the airflow towards the ceiling to avoid condensation problems.

[Read more at fbspanels.com](http://fbspanels.com)



We are very satisfied with the ventilation of the building. The textile ducts supply fresh air into the rooms and create a good air quality. ETRECO has supplied the solution and we have enjoyed our cooperation.

Christian Rasmussen, Larsens Eftf. ApS



Ground floor of administration building

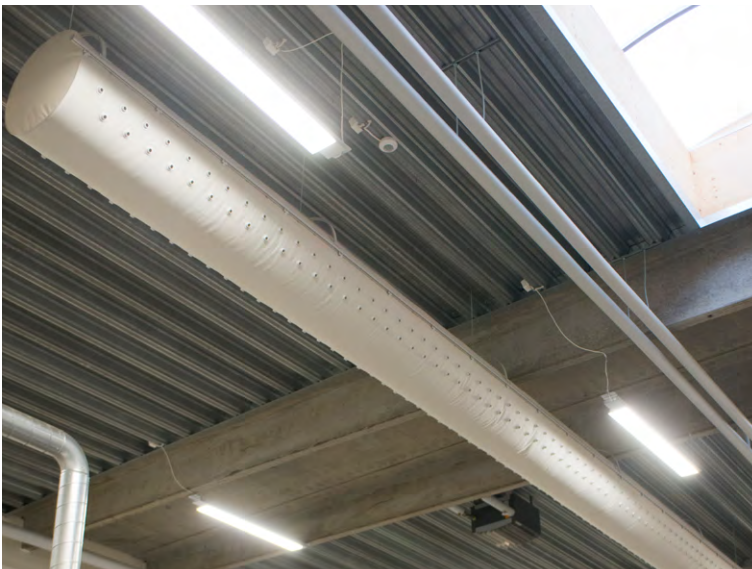


Directional air distribution with nozzles

In the production rooms a total of four textile ducts have been installed to ensure a healthy indoor climate for the employees.

In order to direct the air downwards to the occupied zone where machinery also generate heat the ducts have been fitted with nozzles.

This makes it possible to obtain a constant air change that will ventilate the work station.



KE Fibertec AS is market leader in Textile Based Ventilation. We create good indoor climate through our tailored textile ducts for installation in sports arenas, offices, laboratories, schools etc.

Textile ducts are customizable, easy to install, washable, hygienic, and come in all shapes and colours.

For more information please visit our website: www.ke-fibertec.com.

For further information please contact:

KE Fibertec AS

Tel. +45 75 36 42 00

info@ke-fibertec.dk

www.ke-fibertec.com

