



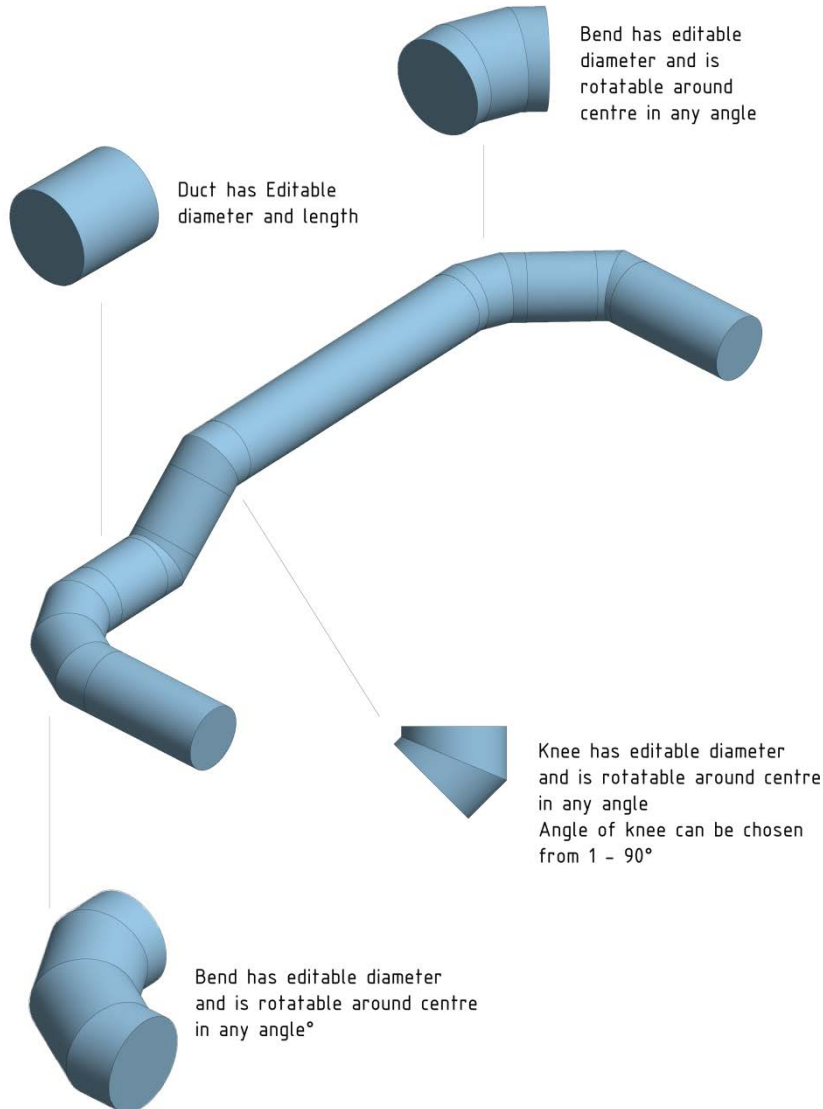
AIR THE WAY YOU WANT

REVIT components

∅-ducts



AIR THE WAY YOU WANT

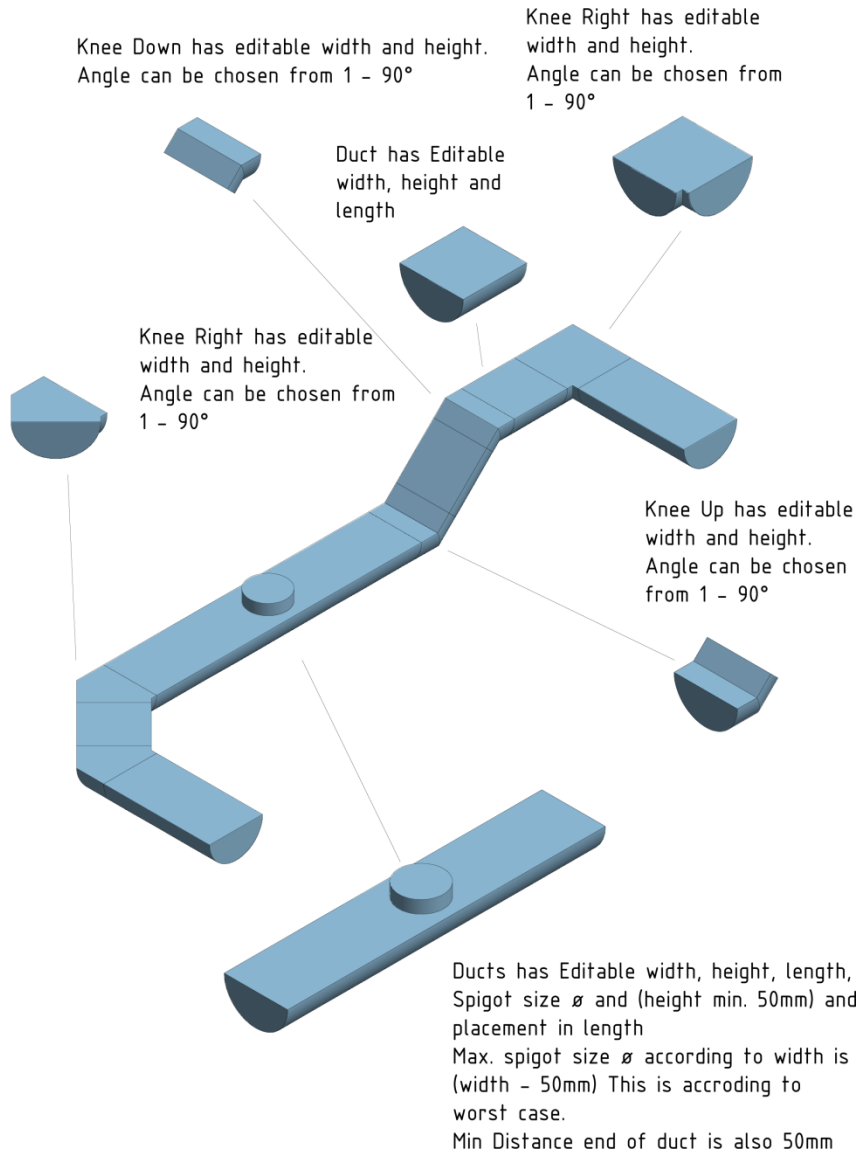


Family	Product
KE Fibertec - ∅-Straight	Straight ∅ duct
KE Fibertec - ∅-Elbow	Elbow for ∅ duct - all directions
KE Fibertec - ∅-Bend-90	90° bending for ∅ duct
KE Fibertec - ∅-Bend-45	45° bending for ∅ duct

D-ducts

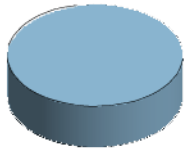


AIR THE WAY YOU WANT



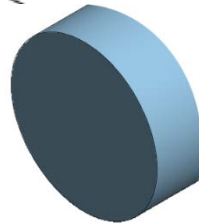
Family	Product
KE Fibertec - DV-Straight	Straight D duct
KE Fibertec - DV-Left	Elbow for D duct – in left direction
KE Fibertec - DV-right	Elbow for D duct – in right direction
KE Fibertec - DV-Up	Elbow for D duct – direction up
KE Fibertec - DV-Down	Elbow for D duct – direction up

Connectors



Top connector has editable diameter and length.
Airflow are possible to change.

Side connector has editable diameter and length.
Airflow are possible to change.



Family	Product
KE Fibertec - Connector-Side	Socket on side
KE Fibertec - Connector-Top	Socket on top

How to do



AIR THE WAY YOU WANT

1. Save the families on your computer
2. Open a project
3. Load the families for \emptyset -ducts and/or D-ducts under **Systems - Duct fitting**
4. Load the family for the connector on side or on top under **Systems – Air Terminal**
5. Insert the connector and add the airflow
6. Insert the desired component
7. Modify the dimension and length/angel under properties
 - Length only on straight ducts
 - Angle only on elbows
8. Add the next component

Parts list (Schedules/Quantities)



AIR THE WAY YOU WANT

<KE Fibertec>							
A	B	C	D	E	F	G	H
Type	Size	Duct Fabric Angle	Duct Fabric Height	Duct Fabric Length	Comments	Description	Manufacturer
KE Fibertec - D-Straight	315ø-315ø			1516			KE Fibertec
KE Fibertec - D-Left	315ø-315ø	45.00°					KE Fibertec
KE Fibertec - D-Straight	315ø-315ø			1516			KE Fibertec
KE Fibertec - D-Right	315ø-315ø	45.00°	158				KE Fibertec
KE Fibertec - D-Straight	315ø-315ø			1516			KE Fibertec
KE Fibertec - D-Up	315ø-315ø	45.00°	158				KE Fibertec
KE Fibertec - D-Straight	315ø-315ø			1516			KE Fibertec
KE Fibertec - D-Down	315ø-315ø	45.00°	158				KE Fibertec
KE Fibertec - D-Straight	315ø-315ø			1516			KE Fibertec
KE Fibertec - DV-Straight	315ø-315ø		100	1500			KE Fibertec
KE Fibertec - DV-Right	315ø-315ø	45.00°	100				KE Fibertec
KE Fibertec - DV-Straight	315ø-315ø		100	1500			KE Fibertec
KE Fibertec - DV-Left	315ø-315ø	45.00°	100				KE Fibertec
KE Fibertec - DV-Straight	315ø-315ø		100	1500			KE Fibertec
KE Fibertec - DV-Up	315ø-315ø	45.00°	100				KE Fibertec
KE Fibertec - DV-Straight	315ø-315ø		100	1500			KE Fibertec
KE Fibertec - DV-Down	315ø-315ø	45.00°	100				KE Fibertec
KE Fibertec - DV-Straight	315ø-315ø		100	1500			KE Fibertec
KE Fibertec - Ø-Bend-90	250ø-250ø	90.00°					KE Fibertec
KE Fibertec - Ø-Bend-45	250ø-250ø	45.00°					KE Fibertec
KE Fibertec - Ø-Elbow	250ø-250ø	35.00°					KE Fibertec
KE Fibertec - Ø-Straight	250ø-250ø			1516			KE Fibertec
KE Fibertec - Ø-Straight	250ø-250ø			1516			KE Fibertec
KE Fibertec - Ø-Straight	250ø-250ø			1516			KE Fibertec
KE Fibertec - Ø-Straight	250ø-250ø			1516			KE Fibertec

