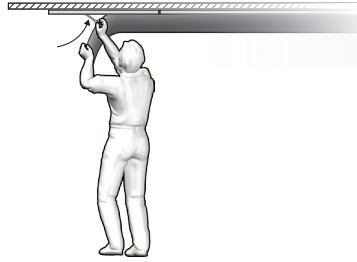


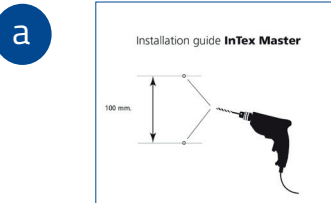
1 Mounting of Textile Ducts

Don't forget the soft starter

Once the InTex solution has been installed, a soft starter is required for start-up of the ventilation system in order to avoid stress on the product.



2 Connection of Master



See the installation guide in the InTex master box.



Connect the master with the LAN network

- 10 or 100Mbit/s connection
- DHCP server
- Internet connection where port 12883 is open from the inside



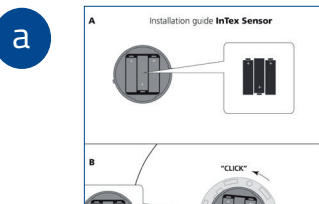
If the master is correctly connected with a router or switch then the green light will be on for 2-5 min.



A red light indicates that there is no connection. This can be caused by:

- Master and network are not connected
- A DHCP server is not available on the network
- Port 12883 is closed
- Proxy settings are not correct (A proxy server is not necessary)

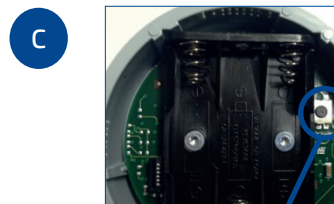
3 Mounting of Sensors



See the installation guide in the InTex sensor box.



Insert the batteries.

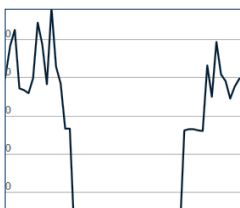


Push the button to test that the sensor is able to communicate with the master.



Scan the code to see the film.

4 InTex Web Portal



Log in to intex.ke-fibertec.com to monitor the pressure and temperature in the textile duct.

AIR THE WAY YOU WANT

KE Fibertec AS
 Industrivej Vest 21
 6600 Vejen
 Denmark

Tel. 75 36 42 00
 Fax 75 36 20 20
www.ke-fibertec.com
info@ke-fibertec.dk

