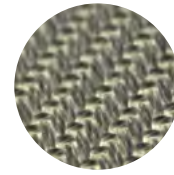


# MATERIALS AND COLOURS.

**AIR THE WAY YOU WANT**

## GreenWeave.

Low-energy and sustainable textile material.



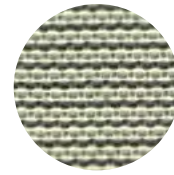
### CRADLE TO CRADLE MATERIALS/COLOURS - PANTONE/RAL

							
WHITE 11-0601-TP / 9010	BLACK 19-5708-TP / 9005	LIGHT GREY 12-4705-TP / 9002	DARK GREY 17-4402-TPG / 7042	DARK BLUE 19-3864-TP / 5002	YELLOW 14-0955-TP / 1028	RED 18-1655-TP / 3031	WHITE 11-0601-TP / 9010
							ANTISTATIC

KE NO.	DESIGNATION	PERMEABILITY/ 120 Pa [m <sup>3</sup> /m <sup>2</sup> /h]	DATASHEET	GREENWEAVE ANTISTATIC	DATASHEET
GW50	GreenWeave® Polyester fabric	50	1	-	-
GW150	GreenWeave® Polyester fabric	150	2	-	-
GW200	GreenWeave® Polyester fabric	200	3	GWA 200	20
GW320	GreenWeave® Polyester fabric	320	4	GWA 320	21
GW500	GreenWeave® Polyester fabric	500	5	GWA 500	22
GW780	GreenWeave® Polyester fabric	780	6	-	-
GW1380	GreenWeave® Polyester fabric	1380	7	-	-

## MultiWeave.

Durable and versatile textile material.



### CRADLE TO CRADLE MATERIALS/COLOURS - PANTONE/RAL

									
WHITE 11-0601-TP / 9010	LIGHT GREY 12-4705-TP / 9002	DARK BLUE 19-3864-TP / 5002	YELLOW 14-0955-TP / 1028	LIGHT BLUE 16-4132-TP / N/A	DARK GREY 17-4402-TPG / 7042	BLACK 19-5708-TP / 9005	GREEN 18-6024-TP / 6016	BEIGE/TAN 15-1215-TP / 1019	RED 18-1655-TP / 3031
									

### STOCK COLOURS

KE NO.	DESIGNATION	PERMEABILITY/ 120 Pa [m <sup>3</sup> /m <sup>2</sup> /h]	DATASHEET
MW40	Flame retardant special Polyester fabric Class 4 Cleanroom	40	41

### CRADLE TO CRADLE MATERIALS/ COLOURS - PANTONE/RAL

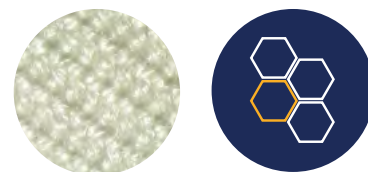
		
WHITE 11-0601-TP / 9010	LIGHT GREY 12-4705-TP / 9002	DARK BLUE 19-3864-TP / 5002
		

KE NO.	DESIGNATION	PERMEABILITY/ 120 Pa [m <sup>3</sup> /m <sup>2</sup> /h]	DATASHEET
MW20	Flame retardant special Polyester fabric - Class 4 Cleanroom	20	40
MW80	Flame retardant special Polyester fabric - Class 4 Cleanroom	80	43
MW320	Flame retardant special Polyester fabric - Class 4 Cleanroom	320	44
MW600	Flame retardant special Polyester fabric - Class 4 Cleanroom	600	45

Prices may vary according to colour. Environmentally friendly Antibac-E treatment is available upon request.

## Nomex.

High-temperature resistant aromatic polyamide fibres.



### WOVEN COLOURS - PANTONE/RAL



NATURAL  
11-0701-TP  
/ N/A



MIDNIGHT BLUE  
19-4023-TP  
/ N/A

KE NO.	DESIGNATION	PERMEABILITY/ 120 Pa [m <sup>3</sup> /m <sup>2</sup> /h]	DATASHEET
NO130	Nomex fabric	130	33
NO290	Nomex fabric	290	16
NO370	Nomex fabric	370	17
NO460	Nomex fabric	460	18
NO700	Nomex fabric	700	19

## ZeroWeave.

Airtight textile duct material.



### AVAILABLE COLOURS - PANTONE/RAL



WHITE  
11-0601-TP  
/ 9010



LIGHT GREY  
14-4201-TP  
/ 7047



DARK BLUE  
19-3864-TP  
/ 5002

KE NO.	DESIGNATION	PERMEABILITY/ 120 Pa [m <sup>3</sup> /m <sup>2</sup> /h]	DATASHEET
ZW	Flame retardant Polyester fabric with PU-coating*	0	27

\*) Approved in acc. with EN 13501-1, B-s1,d0

